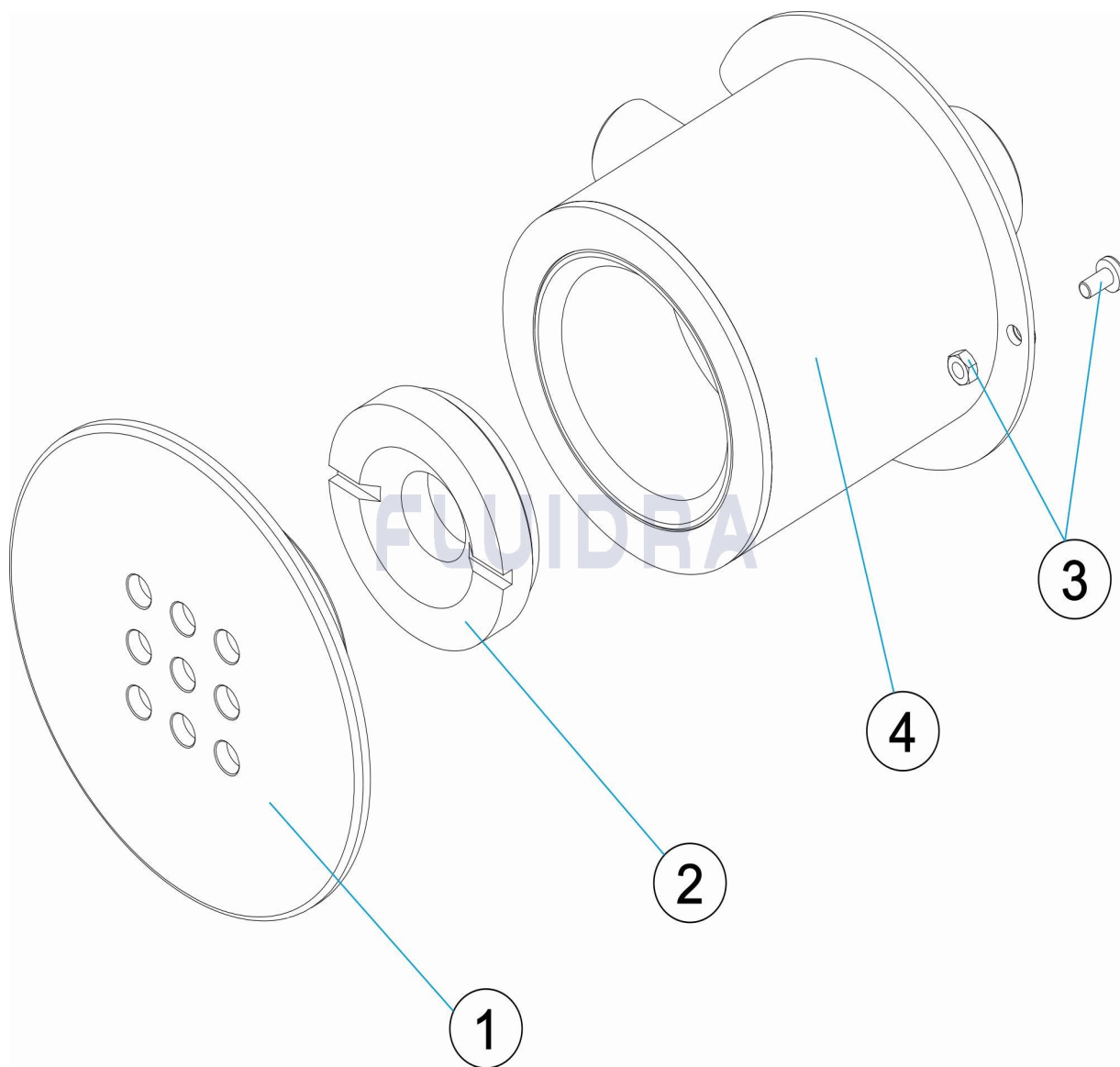


CODIGO **35753**

DESCRIPCION: **JET CON 9 ORIFICIOS**

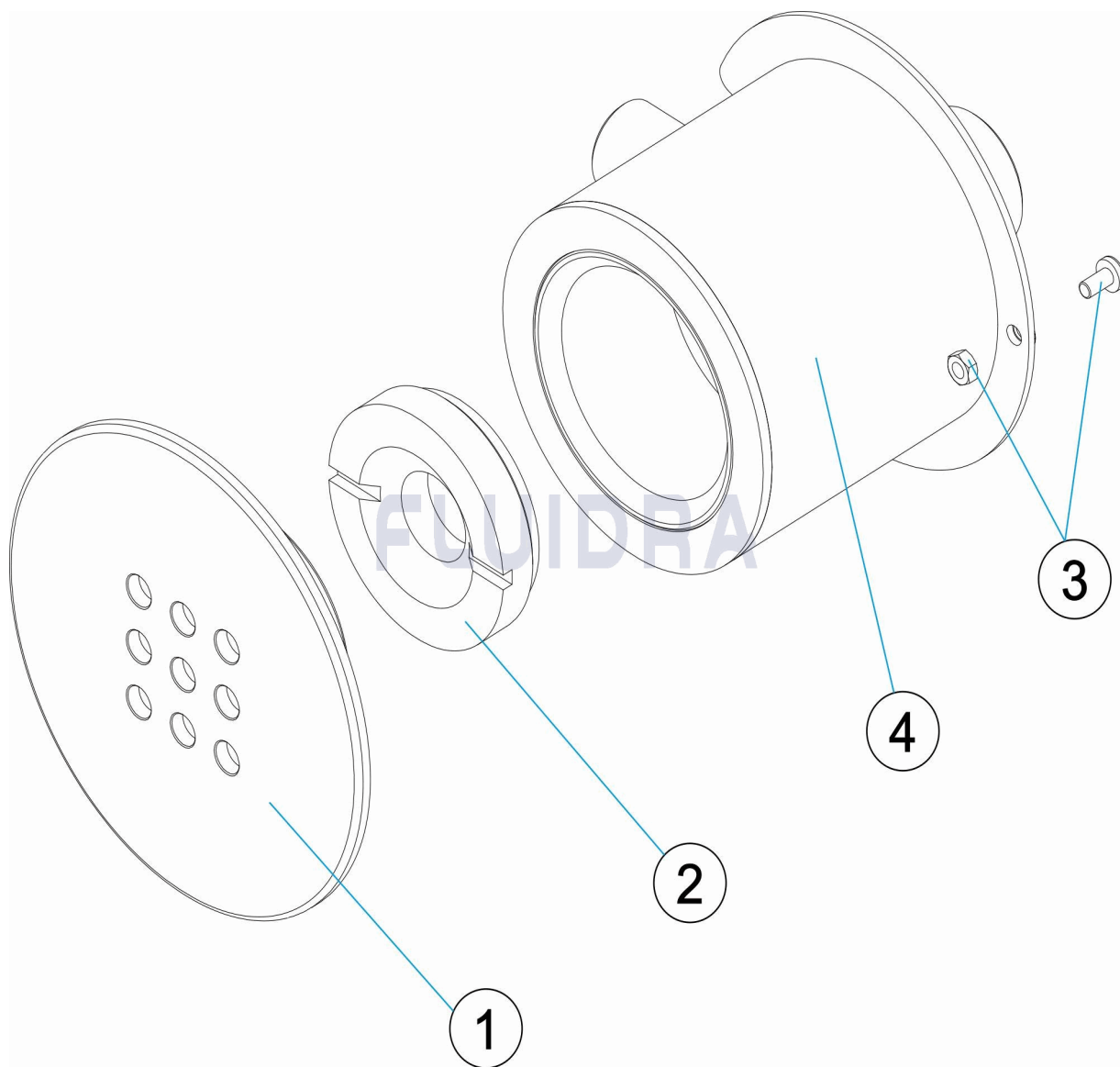


ESPAÑOL

POS	CODIGO	DESCRIPCION	CANTIDAD	POS	CODIGO	DESCRIPCION	CANTIDAD
1	4402040140	EMBELLECEDOR INOX		3	4410010015	TOMA DE TIERRA	
2	4402040141	CONO 2"		4	35372R0100	CONJUNTO SOLDADO BASE BOQUILLA	

CODE **35753**

DESCRIPTION: **JET AVEC 9 TROUS**

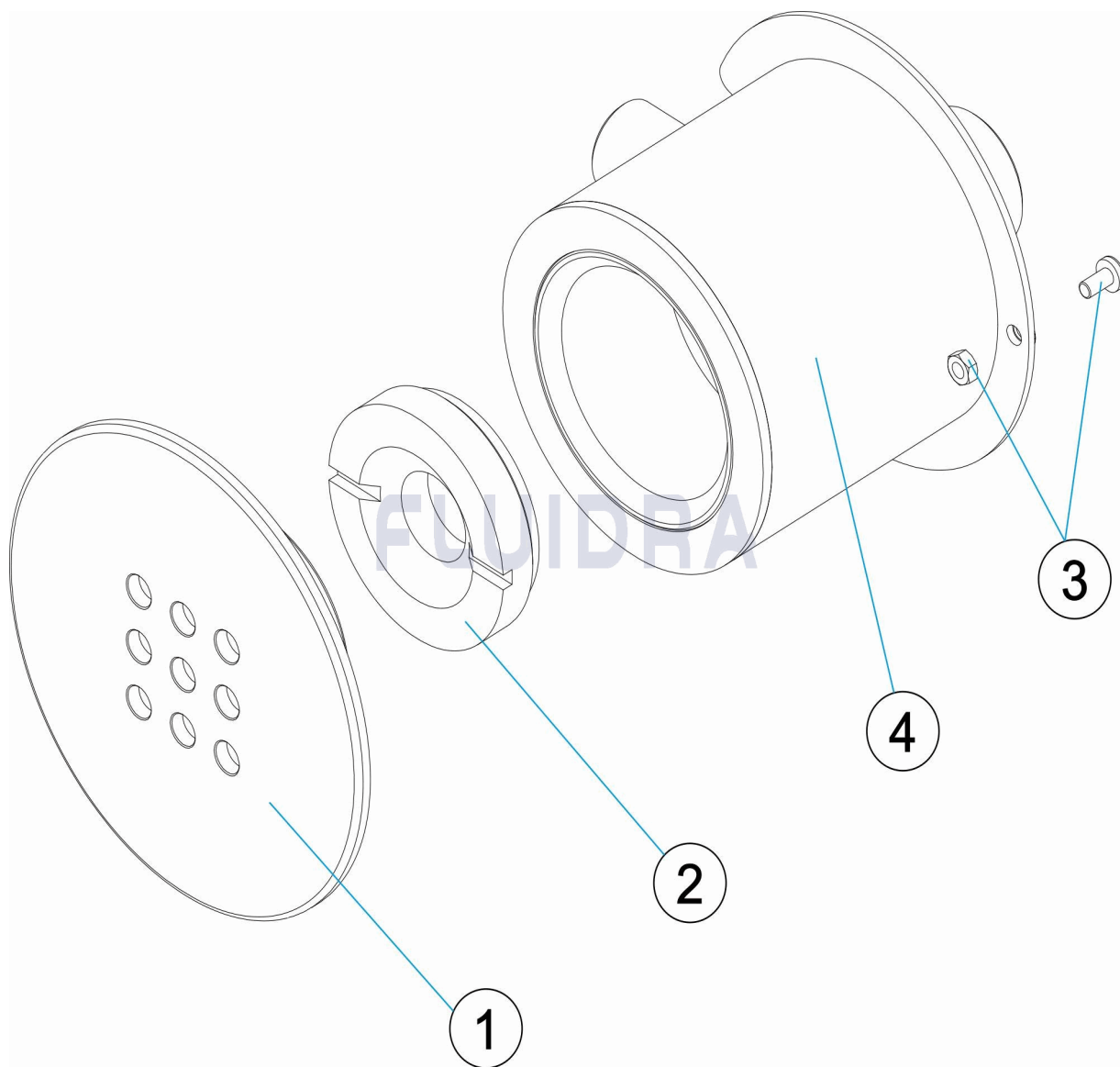


FRANCAIS

POS	CODE	DESCRIPTION	QUANTITE	POS	CODE	DESCRIPTION	QUANTITE
1	4402040140	ENJOLIVEUR INOXYDABLE		3	4410010015	PRISE DE TERRE	
2	4402040141	CÔNE 2"		4	35372R0100	BASE BUSE	

CODE **35753**

DESCRIPTION: **JET WHIT 9 HOLES**

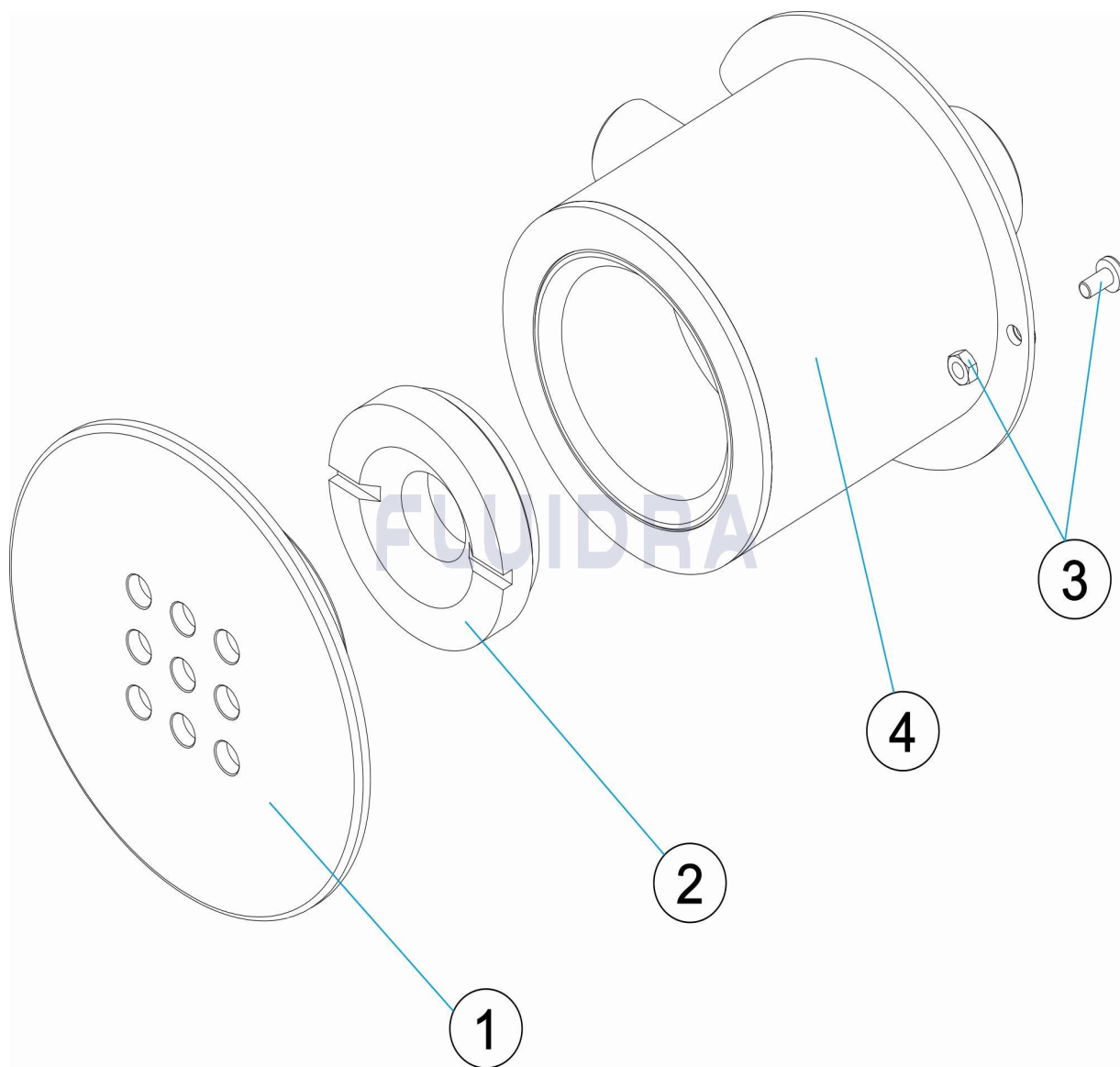


ENGLISH

POS	CODE	DESCRIPTION	QUANTITY	POS	CODE	DESCRIPTION	QUANTITY
1	4402040140	STAINLESS STEEL FACEPLATE		3	4410010015	EARTH CONNECTION	
2	4402040141	2" CONE		4	35372R0100	RETURN INLET BASE	

CODICE **35753**

DESCRIZIONE: **JET CON 9 FORI**

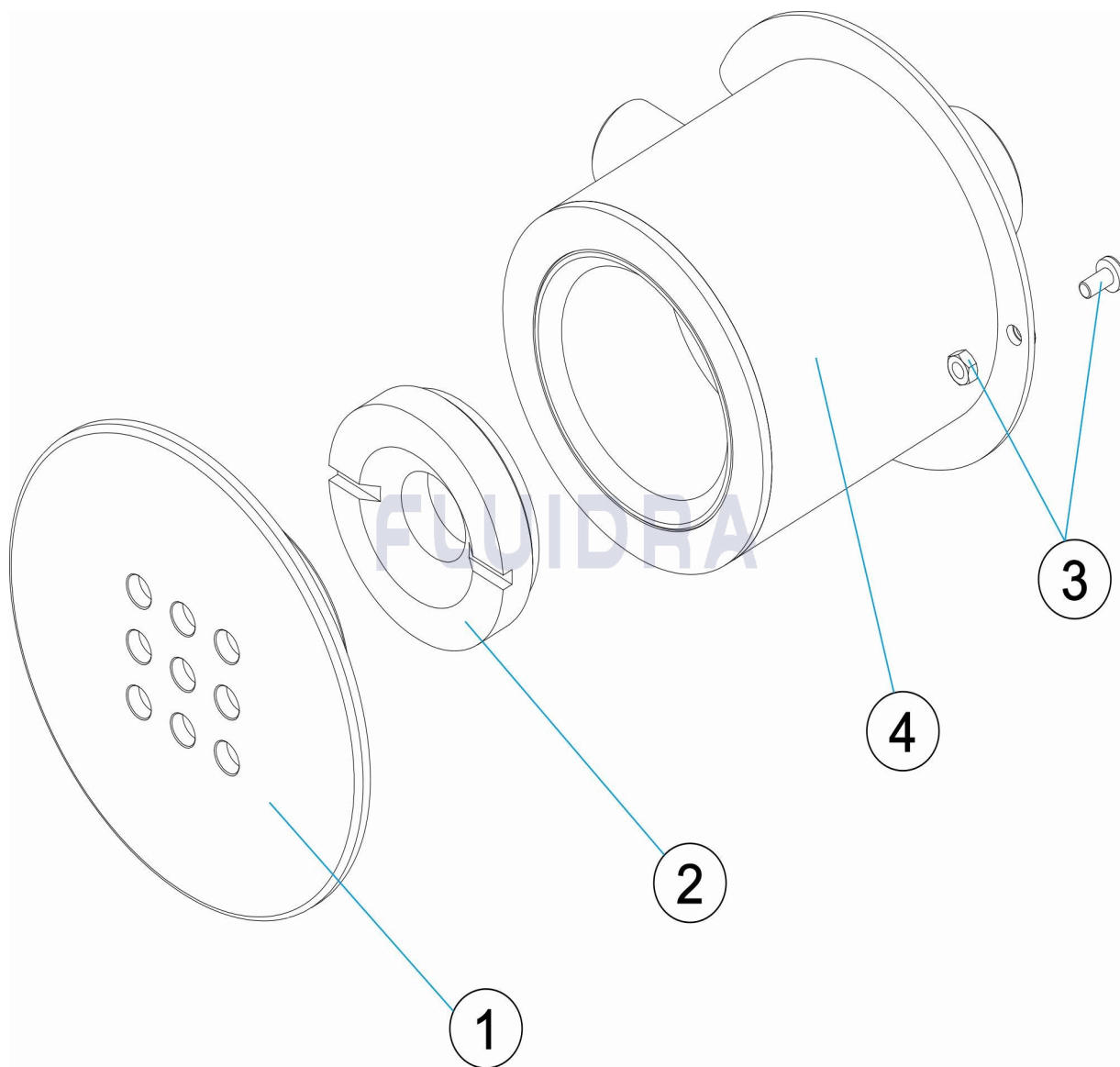


ITALIANO

POS	CODICE	DESCRIZIONE	QUANTITA'	POS	CODICE	DESCRIZIONE	QUANTITA'
1	4402040140	FLANGIA INOX		3	4410010015	PRESA A TERRA	
2	4402040141	CONO 2"		4	35372R0100	BASE BOCCHETTA	

CODE **35753**

BESCHREIBUNG: **DÜSE MIT 9 LÖCHERN**

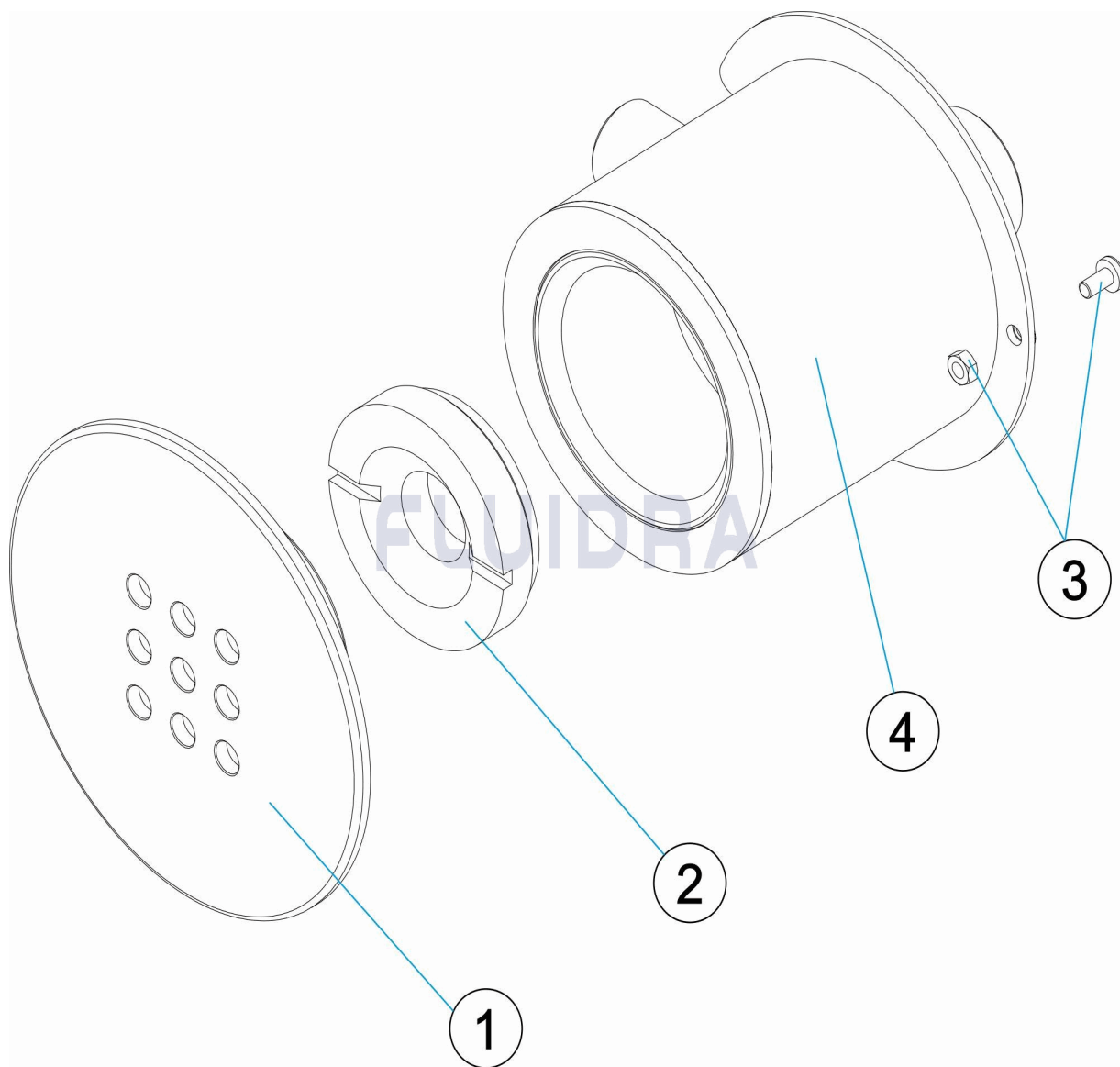


DEUTSCH

POS	CODE	BESCHREIBUNG	MENGE	POS	CODE	BESCHREIBUNG	MENGE
1	4402040140	BLLENDE EDELSTAHL		3	4410010015	ERDUNG	
2	4402040141	KEGEL 2"		4	35372R0100	DÜSENBASIS	

CODIGO **35753**

DESCRIÇÃO: **JET COM 9 FUROS**



PORTUGUES

POS	CODIGO	DESCRIÇÃO	JANTIDADE	POS	CODIGO	DESCRIÇÃO	JANTIDADE
1	4402040140	EMBELEZEDOR INOXIDAVEL		3	4410010015	LIGAÇÃO A TERRA	
2	4402040141	CONE 2"		4	35372R0100	BASE BOQUILHA	