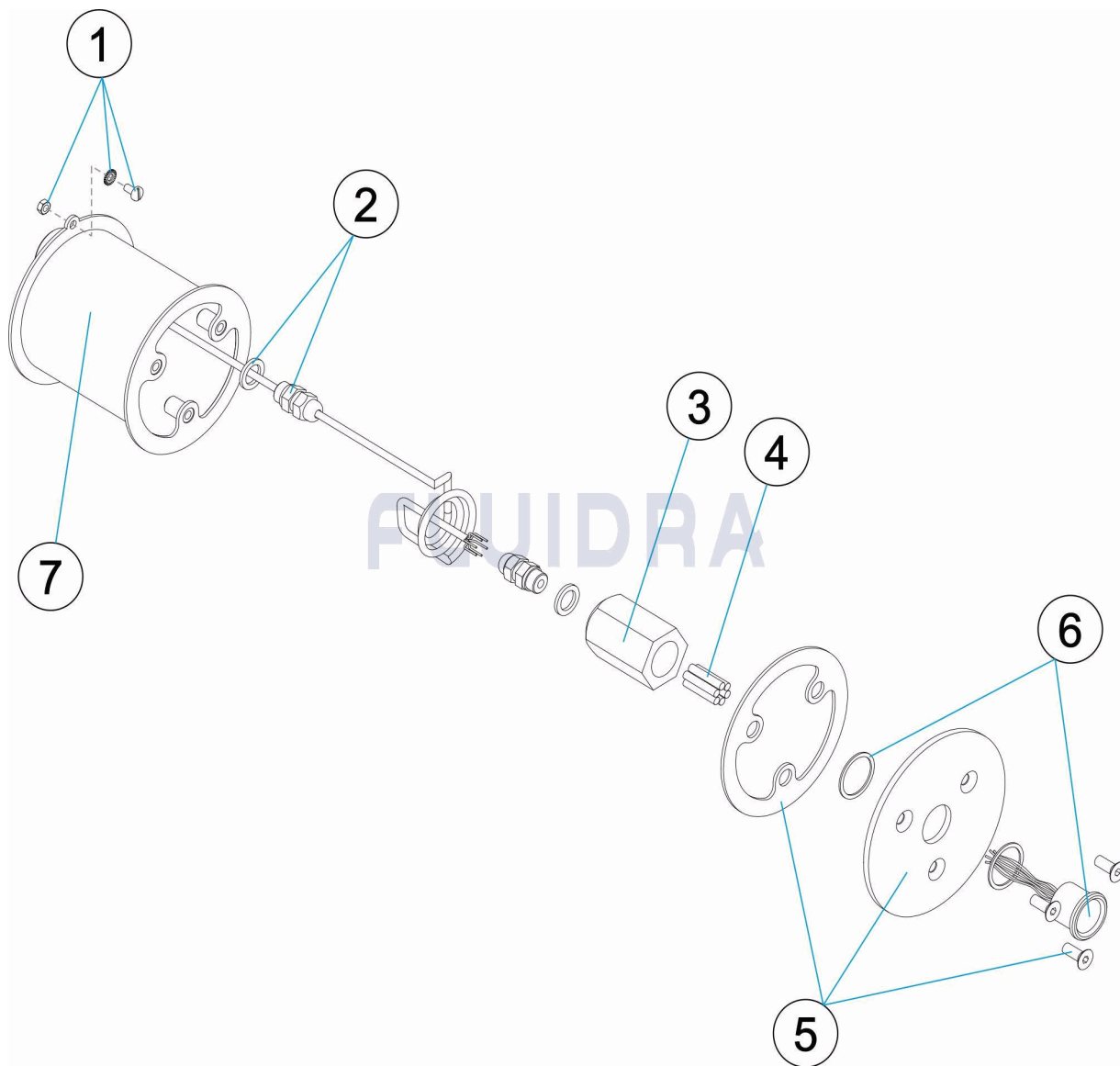


CODIGO **35759, 35760, 45219**

DESCRIPCION: **PULSADOR WELLNESS ESTANCO**



ESPAÑOL

POS	CODIGO	DESCRIPCION	CANTIDAD	POS	CODIGO	DESCRIPCION	CANTIDAD
1	4410010015	TOMA DE TIERRA		6	* 4410010013	PULSADOR D.28 INOX 1LED CSML2	
2	4410010010	PRENSAESTOPAS M12X1,5		6	* 4410010014	PULSADOR D.28 INOX 2LED SML 1	
3	4410010009	CASQUILLO ROSCA PG-16 HEMBRA		6	* 4410010006	PULSADOR D.28 SIMPLE INOX SMA2	
4	* 4410010008	TERMINALES DE CONEXION		7	45219R0100	CAJA ALOJAMIENTO	
5	4410010007	TAPETA + JUNTA					

CODIGO 35759, 35760, 45219

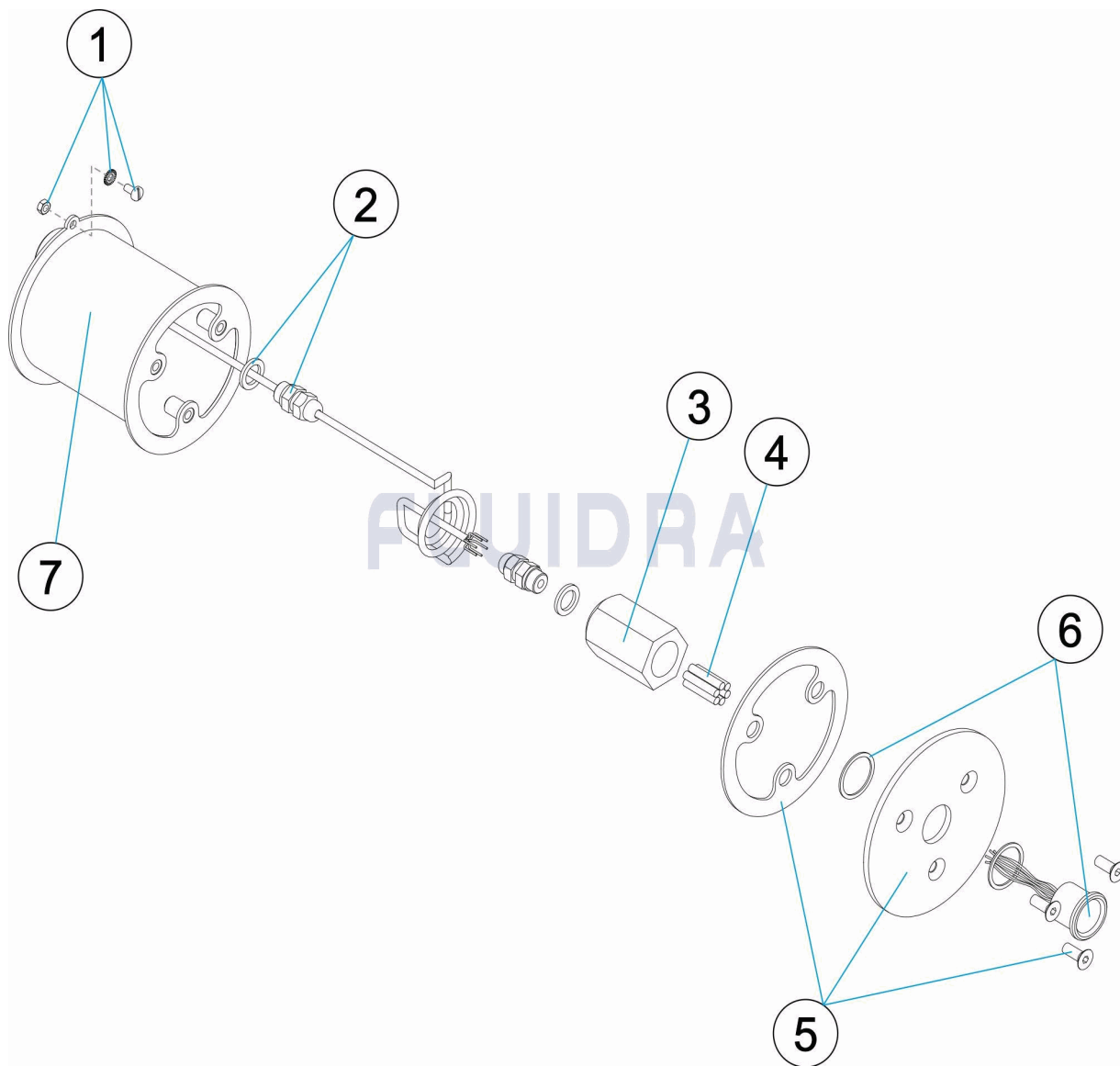
DESCRIPCION: PULSADOR WELLNESS ESTANCO

OBSERVACIONES

POS	CODIGO	OBSERVACIONES
4	* 4410010008	PARA: 35759 [2UNIDADES], 35760 [3UNIDADES], 45219 [1UNIDADES]
6	* 4410010013	PARA: 35759
6	* 4410010014	PARA: 35760
6	* 4410010006	PARA: 45219

CODE 35759, 35760, 45219

DESCRIPTION: BOUTON-POUSSOIR WELLNESS ÉTANCHE



FRANCAIS

POS	CODE	DESCRIPTION	QUANTITE	POS	CODE	DESCRIPTION	QUANTITE
1	4410010015	PRISE DE TERRE		6	* 4410010013	BOUTON-POUSSOIR D.28 INOX 1LED CSML	
2	4410010010	SERRE-CÂBLE M12X1,5		6	* 4410010014	BOUTON-POUSSOIR D.28 INOX 2LED SML	
3	4410010009	CULOT VISSÉ PG-16 FEMELLE		6	* 4410010006	BOUTON-POUSSOIR D.28 SIMPLE INOX SM	
4	* 4410010008	BORNES DE CONNEXION		7	45219R0100	BOÎTIER LOGEMENT	
5	4410010007	PLAQUE + JOINT					

CODE **35759, 35760, 45219**

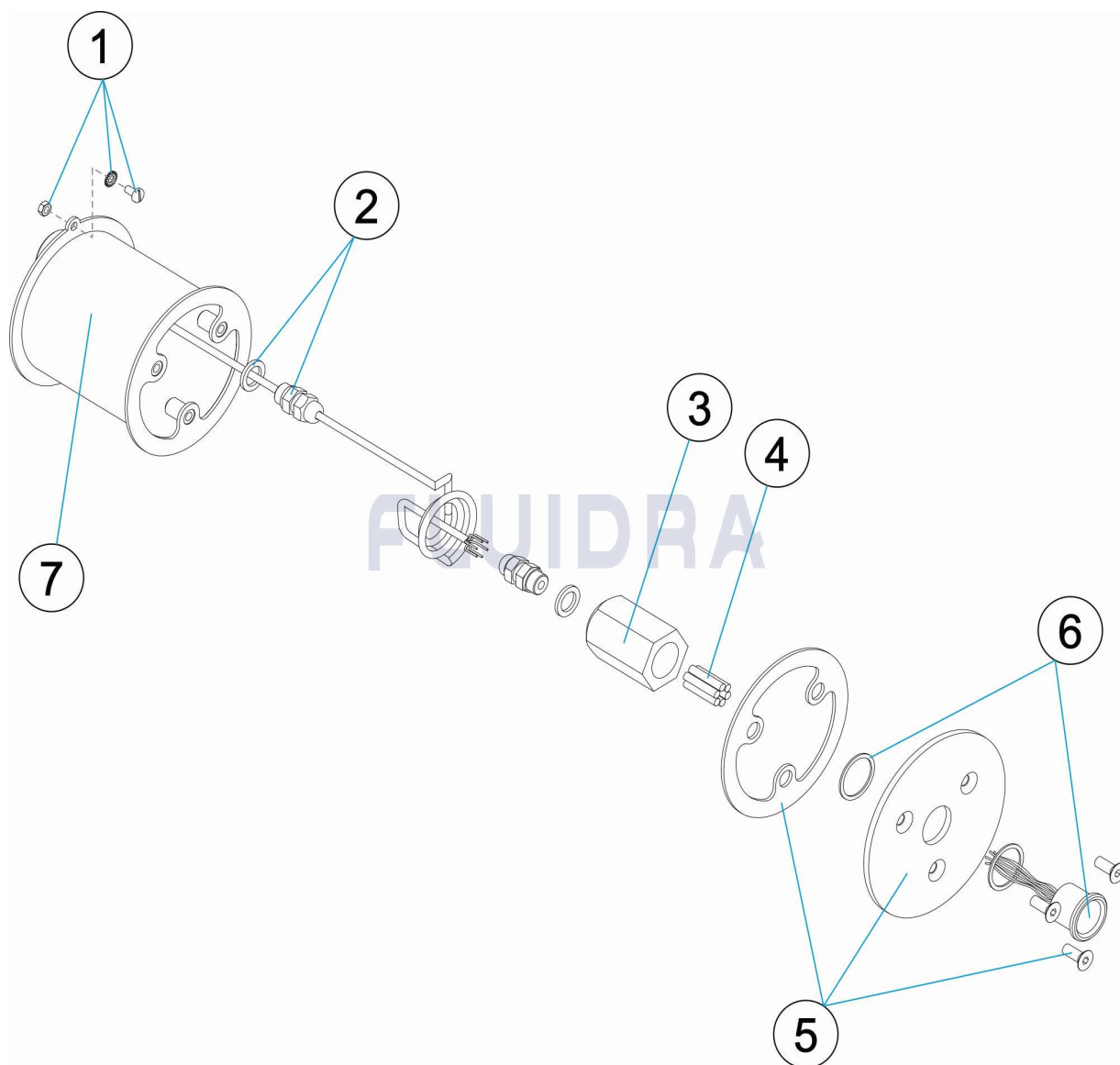
DESCRIPTION: **BOUTON-POUSSOIR WELLNESS ÉTANCHE**

OBSERVATIONS

POS	CODE	OBSERVATIONS
4	* 4410010008	POUR: 35759 [2UT], 35760 [3UT], 45219 [1UT]
6	* 4410010013	POUR: 35759
6	* 4410010014	POUR: 35760
6	* 4410010006	POUR: 45219

CODE **35759, 35760, 45219**

DESCRIPTION: **WELLNESS SEALED PUSH BUTTON**



ENGLISH

POS	CODE	DESCRIPTION	QUANTITY	POS	CODE	DESCRIPTION	QUANTITY
1	4410010015	EARTH CONNECTION		6	* 4410010013	D.28 INOX 1LED CSML2 PUSH BUTTON	
2	4410010010	M12X1,5 PACKING GLAND		6	* 4410010014	D.28 INOX 2LED SML 1 PUSH BUTTON	
3	4410010009	PG-16 FEMALE THREADED BUSHING		6	* 4410010006	D.28 SIMPLE INOX SMA2 PUSH BUTTON	
4	* 4410010008	TERMINAL CONNECTORS		7	45219R0100	HOUSING	
5	4410010007	PLATE + SEAL					

CODE **35759, 35760, 45219**

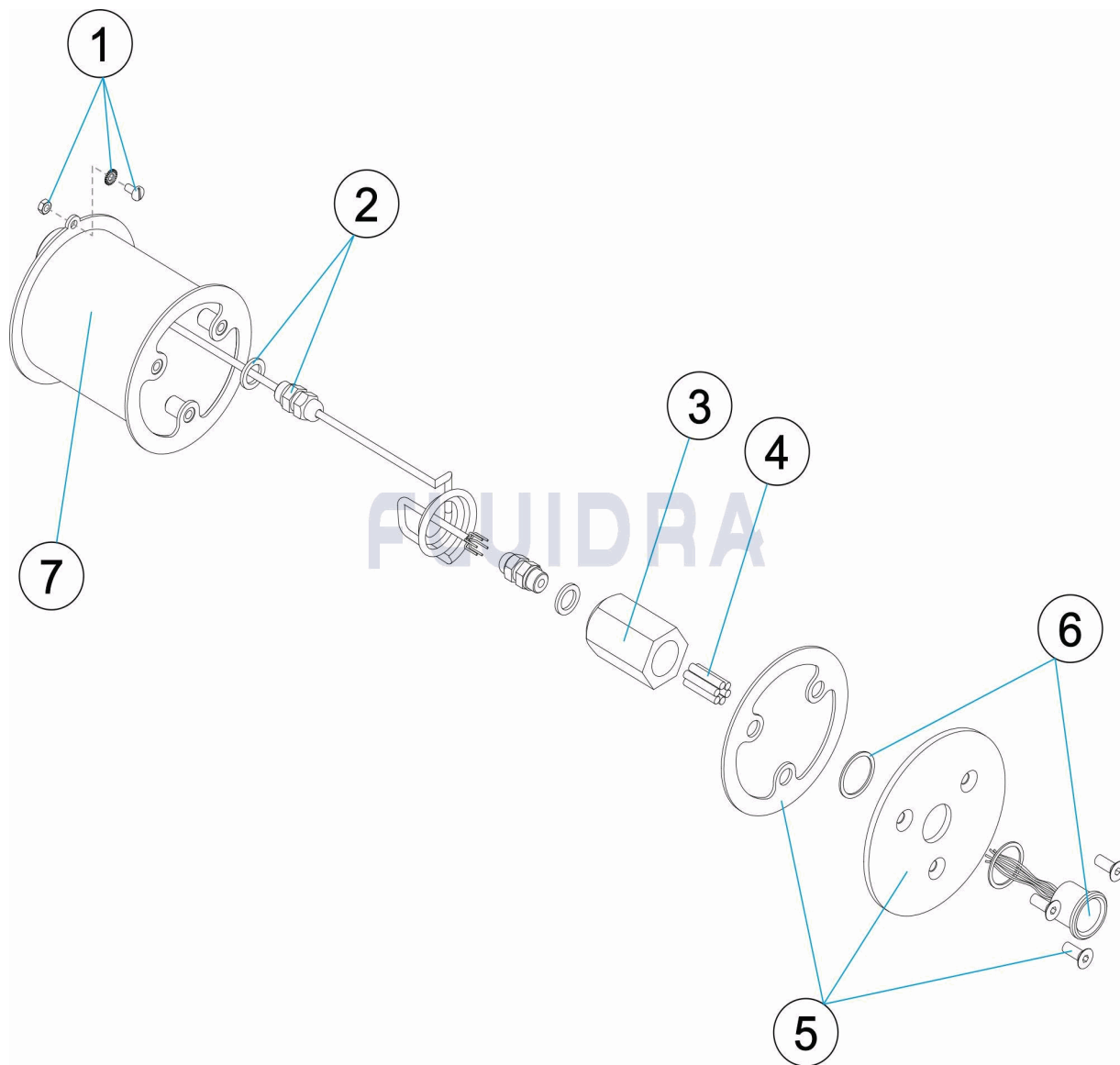
DESCRIPTION: **WELLNESS SEALED PUSH BUTTON**

OBSERVATIONS

POS	CODE	OBSERVATIONS
4	* 4410010008	FOR: 35759 [2UT], 35760 [3UT], 45219 [1UT]
6	* 4410010013	FOR: 35759
6	* 4410010014	FOR: 35760
6	* 4410010006	FOR: 45219

CODICE **35759, 35760, 45219**

DESCRIZIONE: **PULSANTE WELLNESS SIGILLATO**



ITALIANO

POS	CODICE	DESCRIZIONE	QUANTITA'	POS	CODICE	DESCRIZIONE	QUANTITA'
1	4410010015	PRESA A TERRA		6	* 4410010013	PULSANTE D.28 INOX 1LED CSML2	
2	4410010010	PREMISTOPPA M12X1,5		6	* 4410010014	PULSANTE D.28 INOX 2LED SML 1	
3	4410010009	GHIERA FILETTO PG-16 FEMMINA		6	* 4410010006	PULSANTE D.28 SEMPLICE INOX SMA2	
4	* 4410010008	TERMINALE DI CONNESSIONE		7	45219R0100	CASSA ALLOGGIO	
5	4410010007	COPERCHIETTO + GIUNTURA					

CODICE **35759, 35760, 45219**

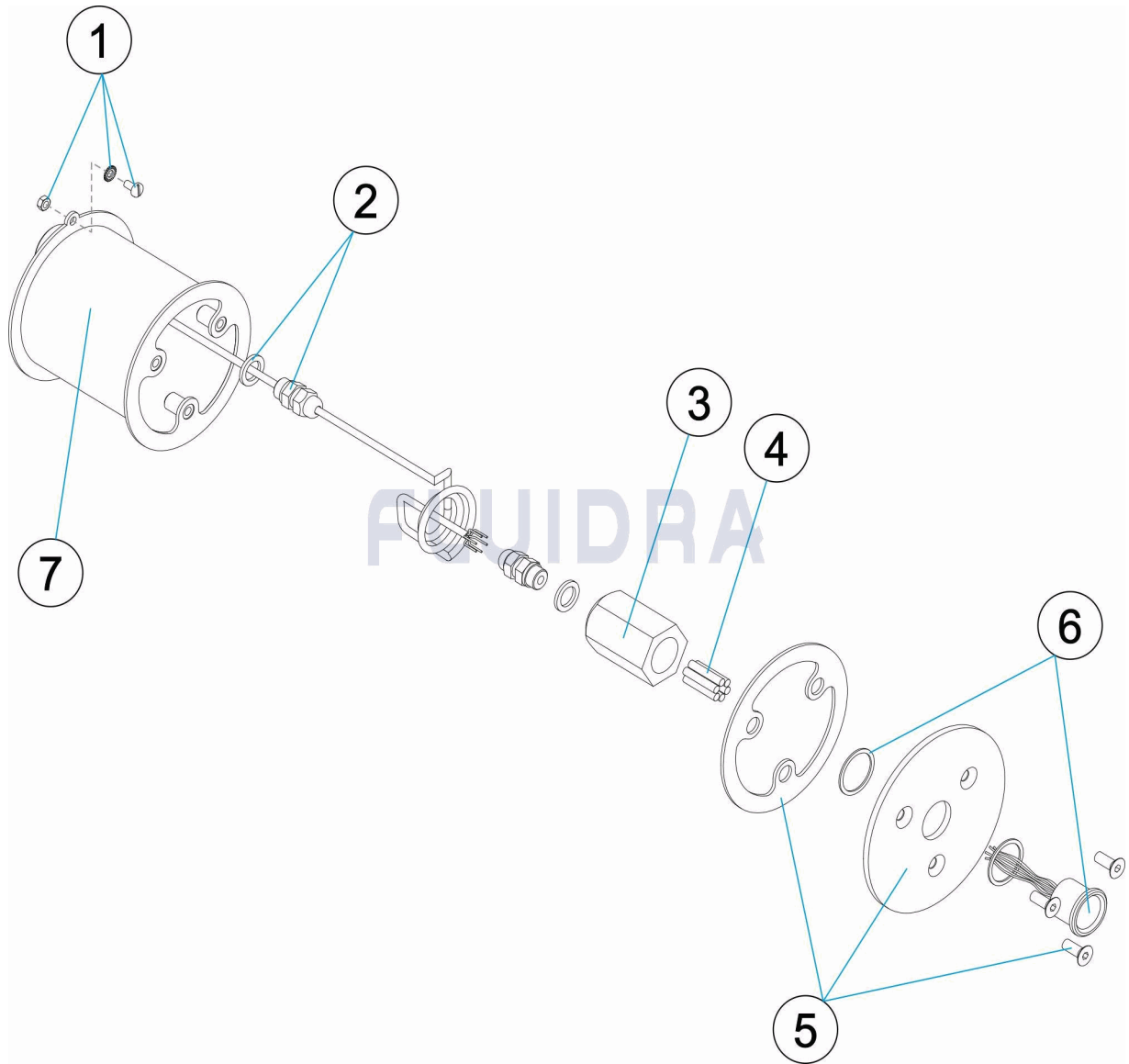
DESCRIZIONE: PULSANTE WELLNESS SIGILLATO

OSSERVAZIONI

POS	CODICE	OSSERVAZIONI
4	* 4410010008	PER: 35759 [2UT], 35760 [3UT], 45219 [1UT]
6	* 4410010013	PER: 35759
6	* 4410010014	PER: 35760
6	* 4410010006	PER: 45219

CODE **35759, 35760, 45219**

BESCHREIBUNG: **DRUCKTASTER WELLNESS DICHT**



DEUTSCH

POS	CODE	BESCHREIBUNG	MENGE	POS	CODE	BESCHREIBUNG	MENGE
1	4410010015	ERDUNG		6	* 4410010013	DRUCKTASTER D.28 1LED EDELSTAHL CSM	
2	4410010010	QUETSCHVERSCHRAUBUNG M12X1,5		6	* 4410010014	DRUCKTASTER D.28 2LED EDELSTAHL SMI	
3	4410010009	FASSUNG PG16 INNENGEWINDE		6	* 4410010006	DRUCKTASTER D. 28 EINFACH EDELSTAHL	
4	* 4410010008	ANSCHLÜSSE		7	45219R0100	LAGERGEHÄUSE	
5	4410010007	ABSCHLUSSPLATTE UND DICHTUNG					

CODE **35759, 35760, 45219**

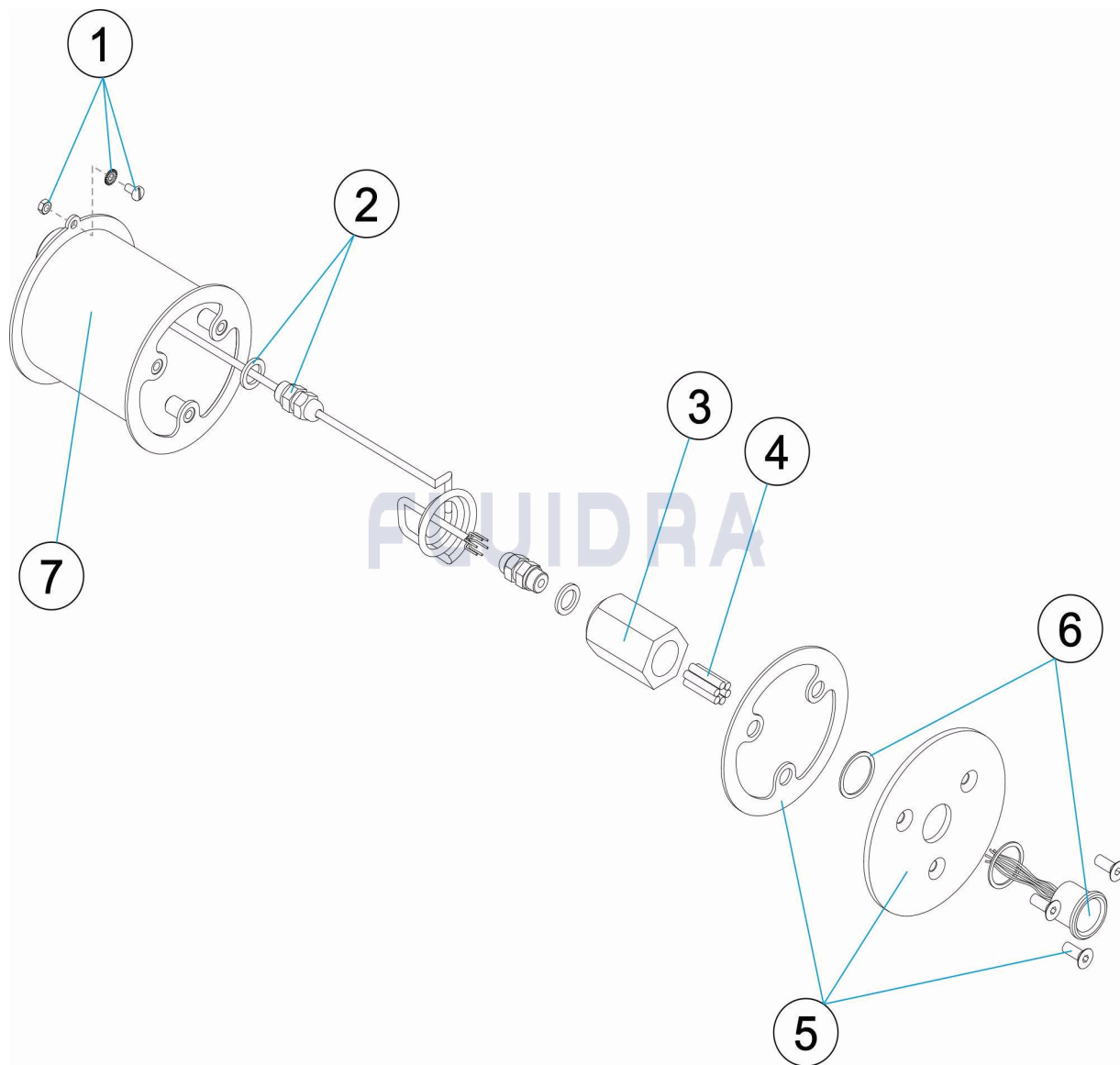
BESCHREIBUNG: **DRUCKTASTER WELLNESS DICHT**

HINWEISE

POS	CODE	HINWEISE
4	* 4410010008	FÜR: 35759 [2UT], 35760 [3UT], 45219 [1UT]
6	* 4410010013	FÜR: 35759
6	* 4410010014	FÜR: 35760
6	* 4410010006	FÜR: 45219

CODIGO **35759, 35760, 45219**

DESCRIÇÃO: **BOTÃO WELLNESS ESTANQUE**



PORTUGUES

POS	CODIGO	DESCRIÇÃO	JANTIDADE	POS	CODIGO	DESCRIÇÃO	JANTIDADE
1	4410010015	LIGAÇÃO A TERRA		6	* 4410010013	BOTÃO D.28 INOX 1LED CSML2	
2	4410010010	PRENSA-ESTOPAS M12X1,5		6	* 4410010014	BOTÃO D.28 INOX 2LED SML 1	
3	4410010009	CASQUILHO ROSCA PG-16 FÊMEA		6	* 4410010006	BOTÃO D.28 SIMPLES INOX SMA2	
4	* 4410010008	TERMINAIS DE LIGAÇÃO		7	45219R0100	CAIXA ALOJAMENTO	
5	4410010007	PLACA ESTANQUE + JUNTA					

CODIGO **35759, 35760, 45219**

DESCRIÇÃO: BOTÃO WELLNESS ESTANQUE

OBSERVAÇÕES

POS	CODIGO	OBSERVAÇÕES
4	* 4410010008	PARA: 35759 [2UT], 35760 [3UT], 45219 [1UT]
6	* 4410010013	PARA: 35759
6	* 4410010014	PARA: 35760
6	* 4410010006	PARA: 45219