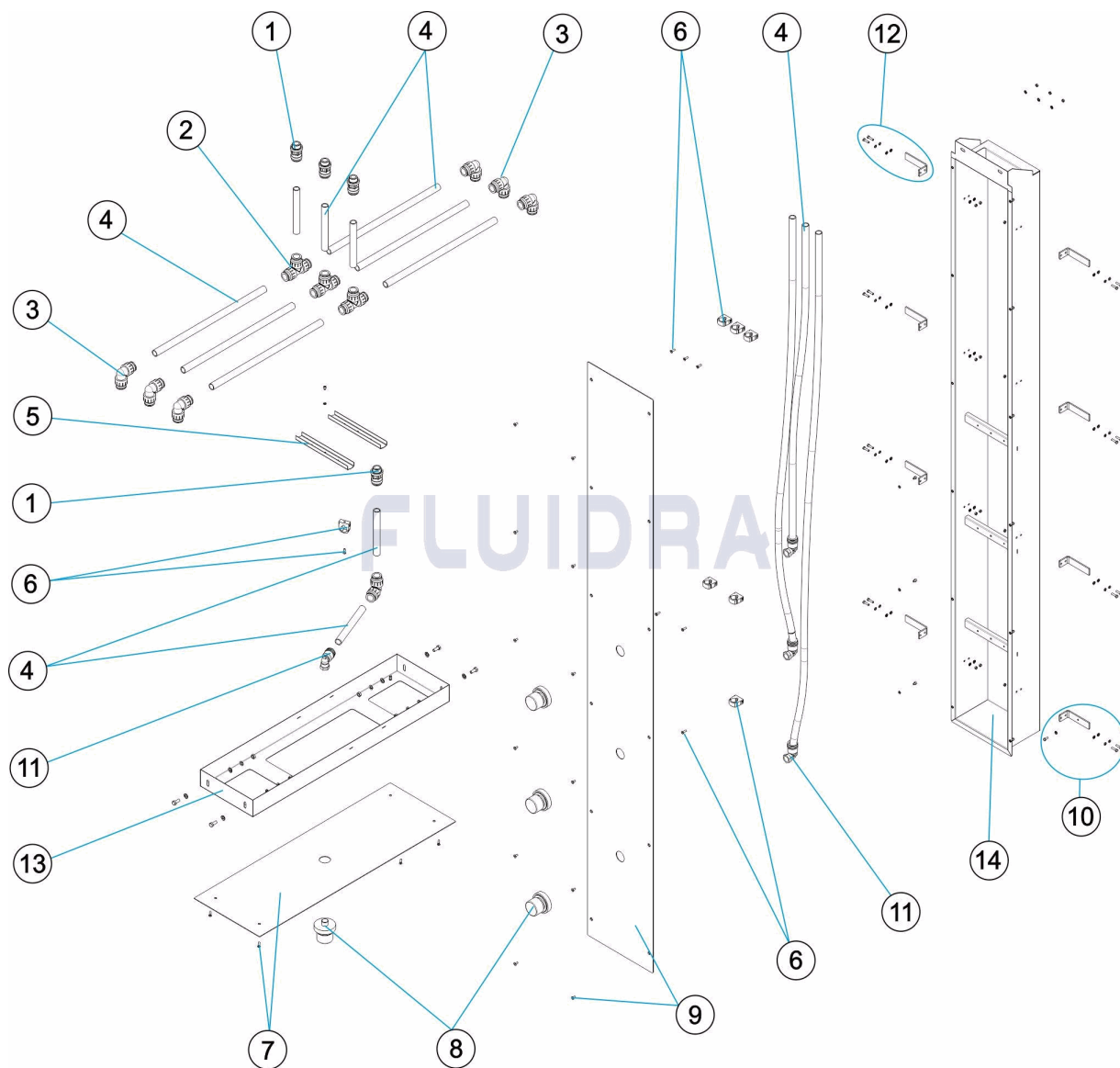


CODIGO **41256**

DESCRIPCION: **DUCHA BITERMICA**

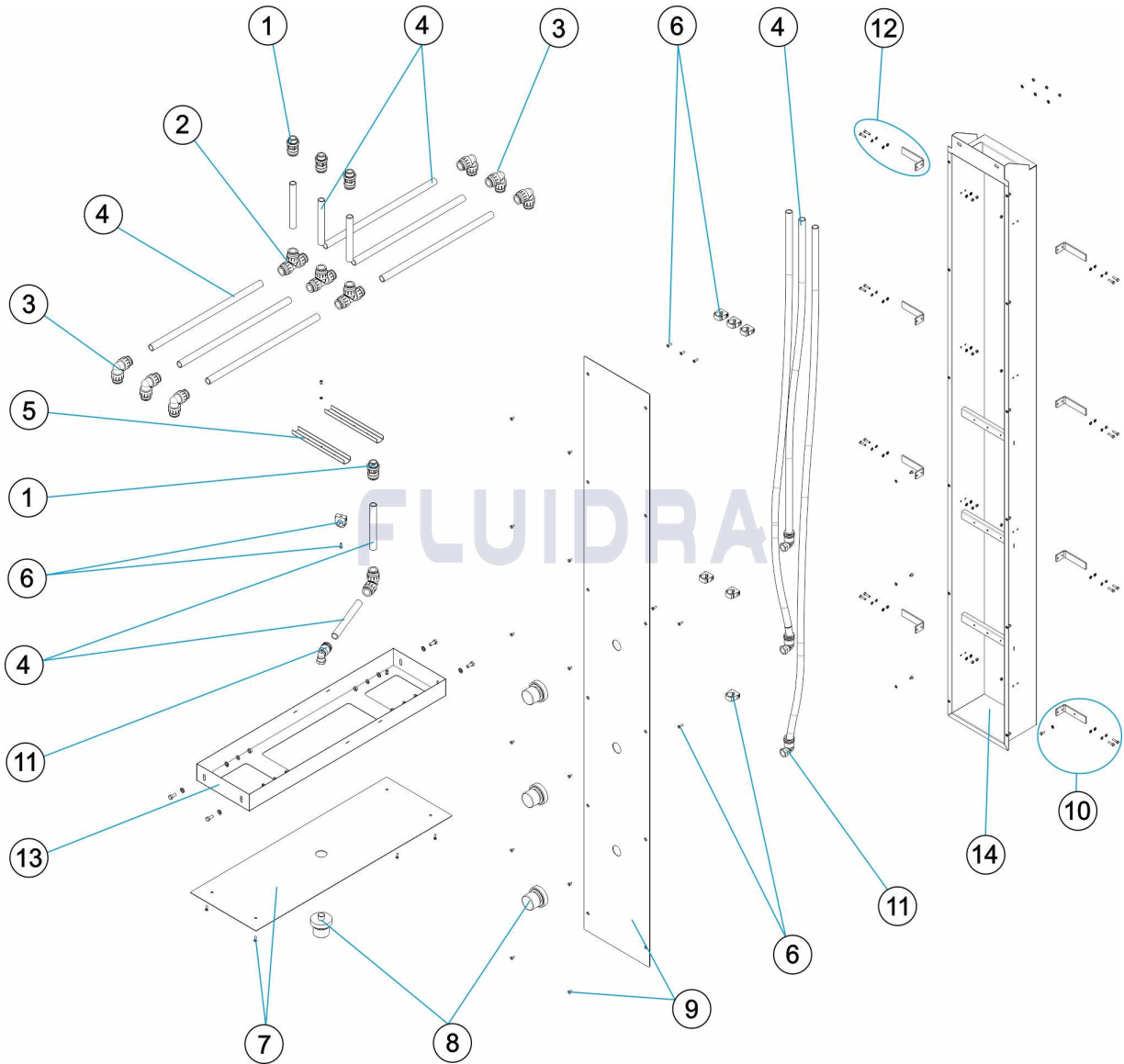


ESPAÑOL

POS	CODIGO	DESCRIPCION	CANTIDAD	POS	CODIGO	DESCRIPCION	CANTIDAD
1	4401040114	ADAPTADOR MACHO D.22-3/4"		7	4401040155	TAPA BRAZO	
2	4401040117	TE D.22		8	4401040156	PIÑA DUCHA LATERAL 1/2"	
3	4401040115	CODO D.22		9	4401040157	TAPA EMBELLECEDORA CUERPO	
4	4401040125	TUBO MULTICAPA B-PEX 22X3 (1 METRO)		10	4401040158	ANGULO ANCLAJE PARA TOMA TIERRA	
4	4401040152	TUBO MULTICAPA B-PEX 22X3 (2 METROS)		11	4401040159	CODO HEMBRA D.22X1/2"	
4	4401040153	TUBO MULTICAPA B-PEX 22X3 (3 METROS)		12	4401040160	ANGULO ANCLAJE	
5	4401040128	PERFIL FIJACION RACORD		13	34057R0200	CUERPO SUPERIOR	
6	4401040122	CLIP D.22		14	34057R0100	CUERPO COLUMNA	

CODE 41256

DESCRIPTION: DOUCHE BI-THERMIQUE

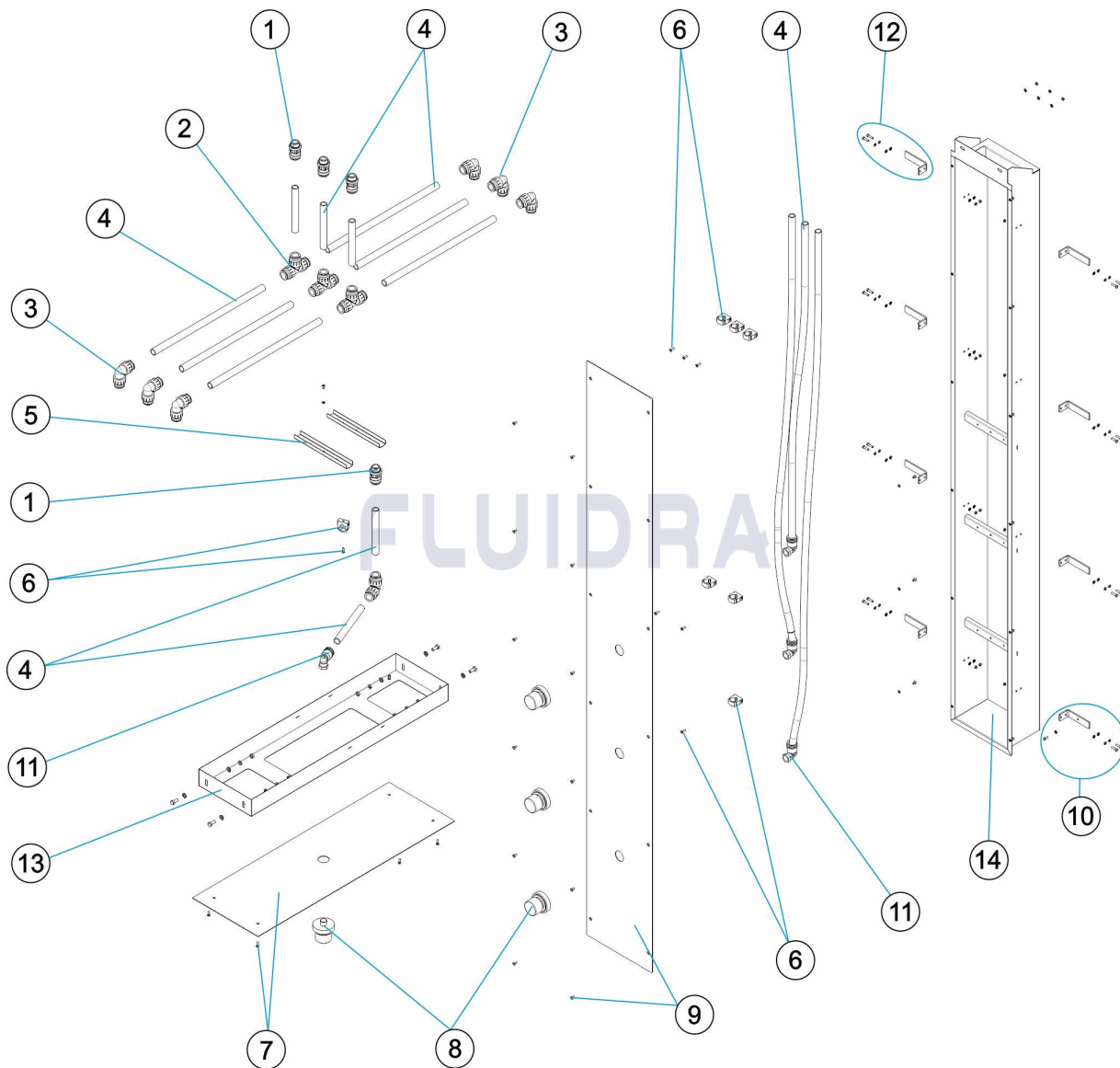


FRANCAIS

POS	CODE	DESCRIPTION	QUANTITE	POS	CODE	DESCRIPTION	QUANTITE
1	4401040114	ADAPTATEUR MÂLE D.22-3/4"		7	4401040155	CACHE BRAS	
2	4401040117	TE D.22		8	4401040156	POMMEAU DE DOUCHE 1/2"	
3	4401040115	COUDE D.22		9	4401040157	COUVERCLE ENJOLIVEUR	
4	4401040125	TUBO MULTISTRATO B-PEX 22X3 (1 METRE)		10	4401040158	ANGLE FIXATION POUR PRISE DE TERRE	
4	4401040152	TUBO MULTISTRATO B-PEX 22X3 (2 METRE)		11	4401040159	COUDE FEMELLE D.22X1/2"	
4	4401040153	TUBO MULTISTRATO B-PEX 22X3 (3 METRE)		12	4401040160	ANGLE FIXATION	
5	4401040128	PROFIL FIXATION RACCORD		13	34057R0200	CORPS SUPÉRIEUR	
6	4401040122	CLIP D.22		14	34057R0100	CORPS COLONNE	

CODE **41256**

DESCRIPTION: **DUAL TEMPERATURE SHOWER**

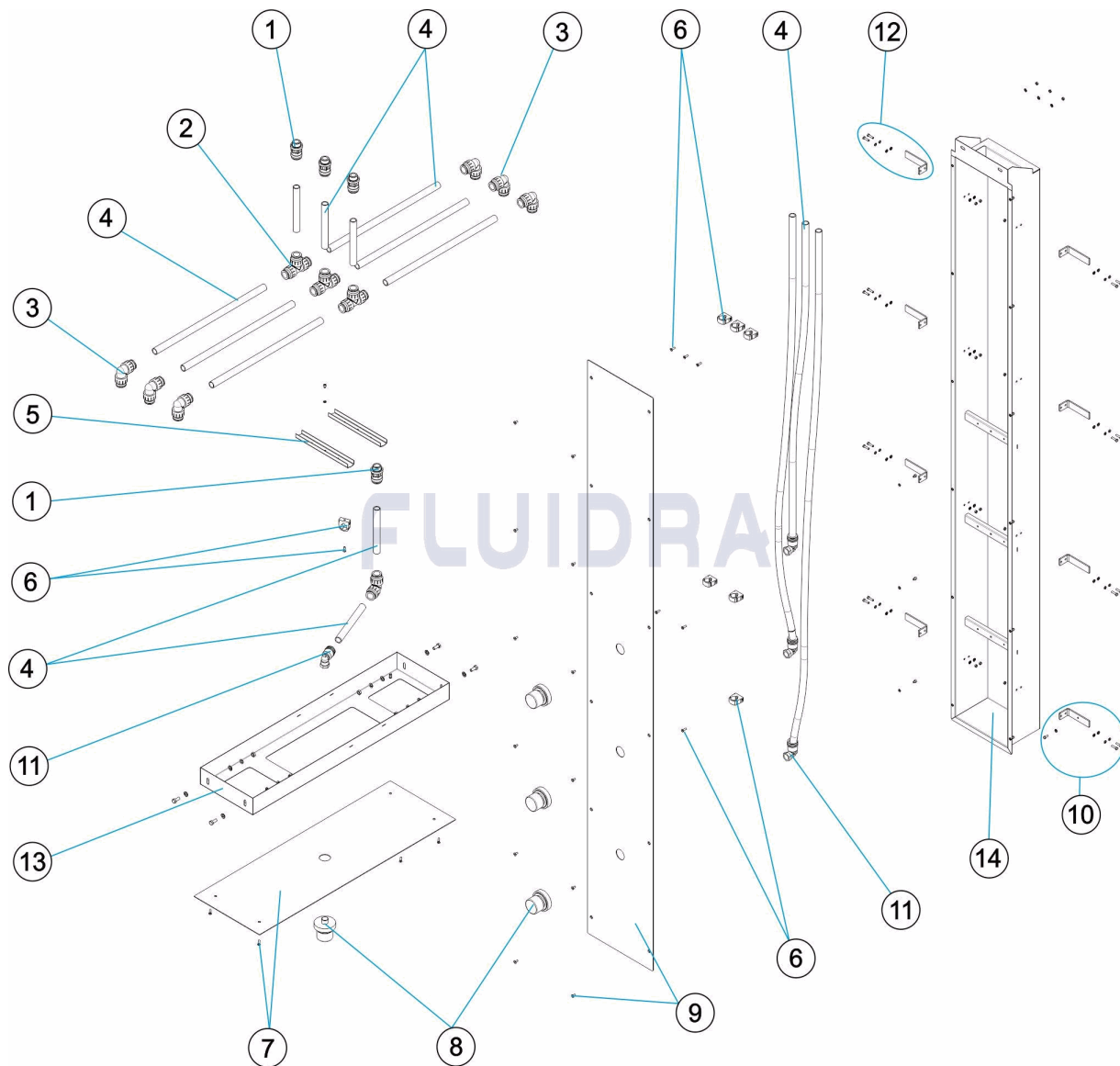


ENGLISH

POS	CODE	DESCRIPTION	QUANTITY	POS	CODE	DESCRIPTION	QUANTITY
1	4401040114	D. 22-3/4" MALE ADAPTOR		7	4401040155	LID SHOWER ARM	
2	4401040117	D.22 'TE '		8	4401040156	1/2" SHOWER HEA "	
3	4401040115	D.22 ELBOW		9	4401040157	TRIM COVER	
4	4401040125	B-PEX MULTILAYER TUBING 22 X 3 (1 MET)		10	4401040158	CORNER ANCHOR FOR GROUND INLET	
4	4401040152	B-PEX MULTILAYER TUBING 22 X 3 (2 MET)		11	4401040159	D.22 X 1/2" FEMALE BEN "	
4	4401040153	B-PEX MULTILAYER TUBING 22 X 3 (3 MET)		12	4401040160	CORNER ANCHOR	
5	4401040128	CONNECTOR FIXING PROFILE		13	34057R0200	UPPER UNIT	
6	4401040122	CLIP D.22		14	34057R0100	COLUMN UNIT	

CODICE 41256

DESCRIZIONE: DOCCIA BITERMICA

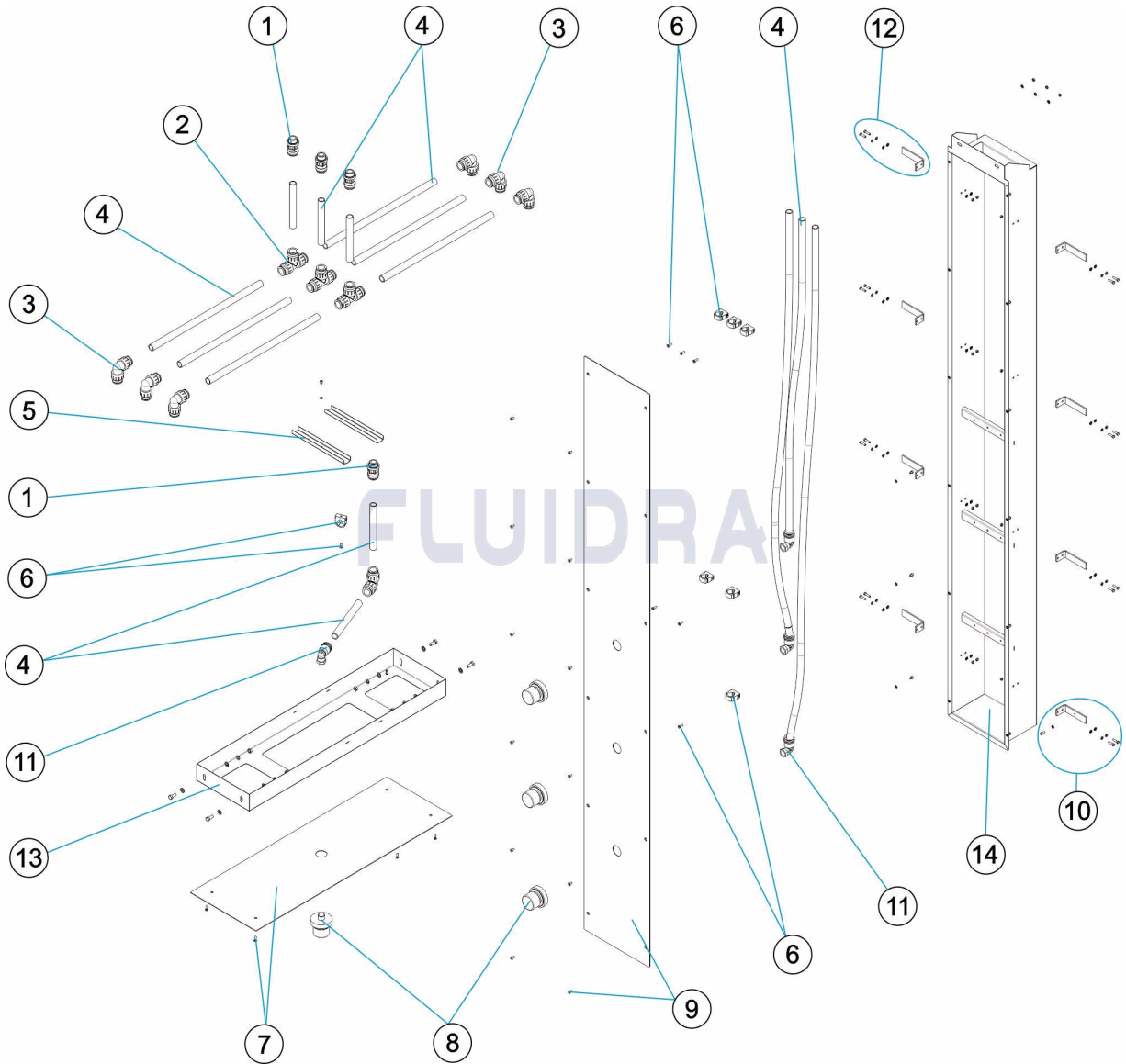


ITALIANO

POS	CODICE	DESCRIZIONE	QUANTITA'	POS	CODICE	DESCRIZIONE	QUANTITA'
1	4401040114	ADATTATORE MASCHIO D.22-3/4"		7	4401040155	TAPPO BRACCIO	
2	4401040117	T' D.22		8	4401040156	DIFFUSORE DOCCIA 1/2"	
3	4401040115	GOMITO D.22		9	4401040157	COPERCHIO ORNAMENTALE	
4	4401040125	TUYAU MULTICOUCHE B-PEX 22X3 (1 MÈT)		10	4401040158	ANGOLO ANCORAGGIO PER PRESA A TERI	
4	4401040152	TUYAU MULTICOUCHE B-PEX 22X3 (2 MÈT)		11	4401040159	FEMMINA A GOMITO D.22X1/2"	
4	4401040153	TUYAU MULTICOUCHE B-PEX 22X3 (3 MÈT)		12	4401040160	ANGOLO ANCORAGGIO	
5	4401040128	PROFILO FISSAGGIO CONNETTORE		13	34057R0200	CORPO SUPERIORE	
6	4401040122	CLIP D.22		14	34057R0100	CORPO COLONNA	

CODE 41256

BESCHREIBUNG: DUSCHE BITERMISCH

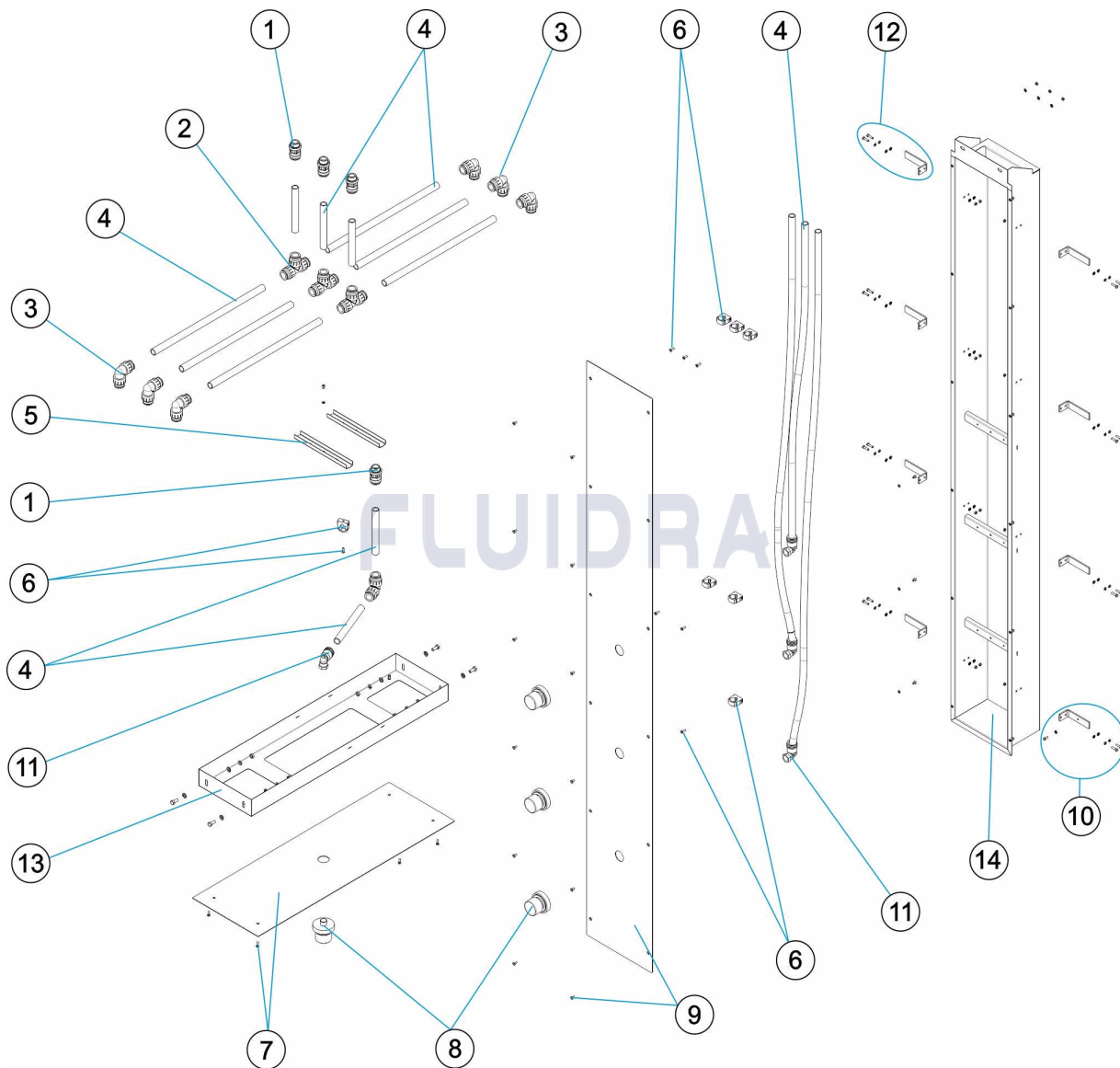


DEUTSCH

POS	CODE	BESCHREIBUNG	MENGE	POS	CODE	BESCHREIBUNG	MENGE
1	4401040114	ADAPTERSTECKER D. 22 - 3/4"		7	4401040155	ABDECKUNG ARM	
2	4401040117	T-STÜCK D. 22		8	4401040156	DUSCHKOPF SEITLICH 1/2"	
3	4401040115	WINKEL D. 22		9	4401040157	ZIERDECKEL GEHÄUSE	
4	4401040125	MEHRSCHICHTROHR B - PEX 22 X 3 (1 ME		10	4401040158	VERANKERUNGSWINKEL FÜR ERDUNGSBI	
4	4401040152	MEHRSCHICHTROHR B - PEX 22 X 3 (2 ME		11	4401040159	WINKEL MUFFE D. 22 X 1/2"	
4	4401040153	MEHRSCHICHTROHR B - PEX 22 X 3 (3 ME		12	4401040160	VERANKERUNGSWINKEL	
5	4401040128	PROFIL FIXIERUNG GEWINDE		13	34057R0200	OBERES GEHÄUSE	
6	4401040122	CLIP D. 22		14	34057R0100	GEHÄUSE SÄULE	

CODIGO **41256**

DESCRIÇÃO: **DUCHE BITÉRMICO**



PORTUGUES

POS	CODIGO	DESCRIÇÃO	JANTIDADE	POS	CODIGO	DESCRIÇÃO	JANTIDADE
1	4401040114	ADAPTADOR MACHO D.22-3/4"	7	4401040155	TAMPA BRAÇO		
2	4401040117	TÊ' D.22	8	4401040156	REGADOR CHUVEIRO 1/2"		
3	4401040115	COTOBELO D.22	9	4401040157	TAMPA EMBELEZEDORA		
4	4401040125	TUBO MULTICAMADA B-PEX 22X3 (1 METR	10	4401040158	ÂNGULO ANCORAGEM PARA LIGAÇÃO À TI		
4	4401040152	TUBO MULTICAMADA B-PEX 22X3 (2 METR	11	4401040159	COTOVELO FÊMEA D.22X1/2"		
4	4401040153	TUBO MULTICAMADA B-PEX 22X3 (3 METR	12	4401040160	ÂNGULO ANCORAGEM		
5	4401040128	PERFIL FIXAÇÃO RACORD	13	34057R0200	CORPO SUPERIOR		
6	4401040122	CLIP D.22	14	34057R0100	CORPO COLUNA		