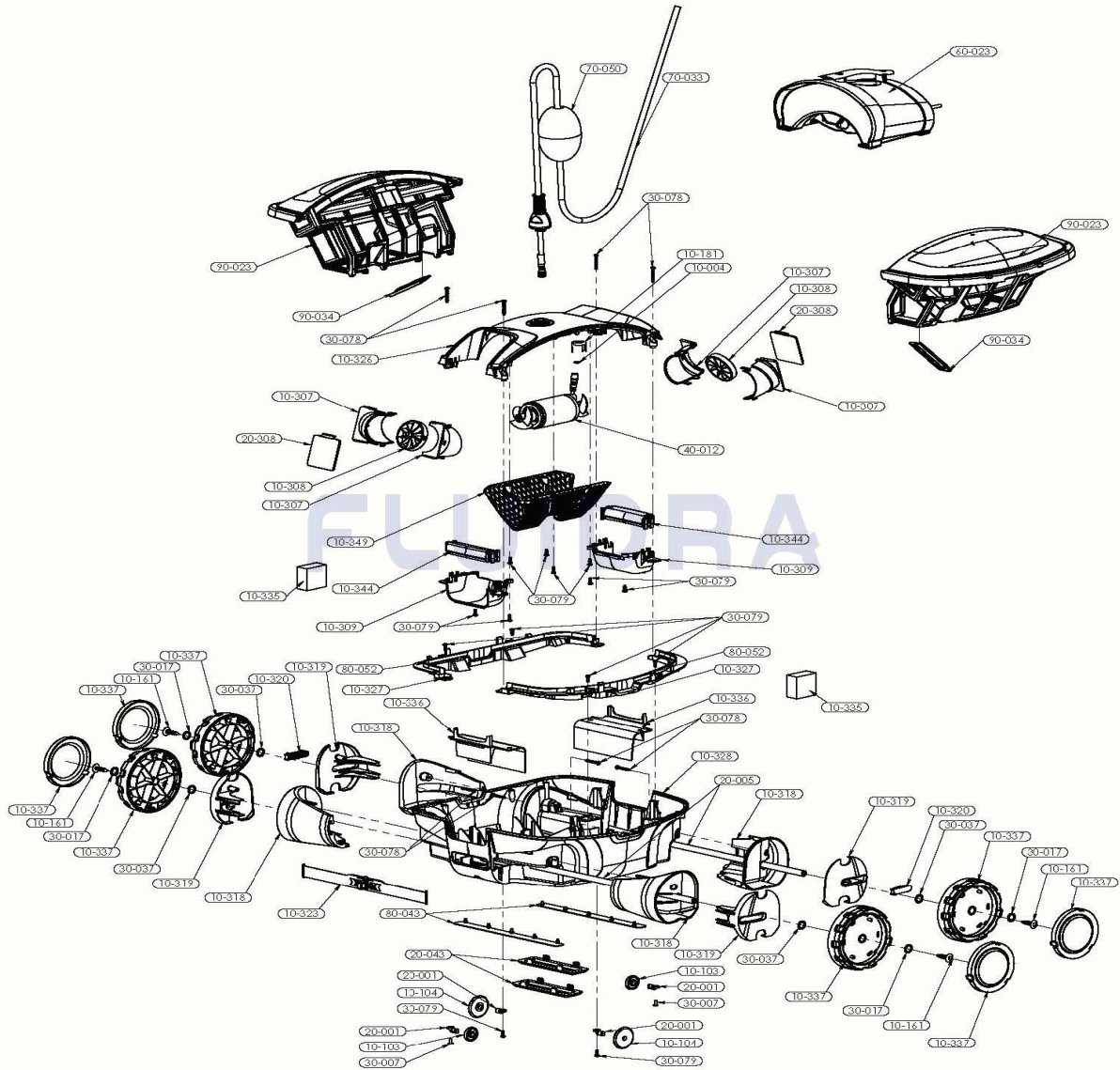


CODIGO **57350**

DESCRIPCION: LIMPIAFONDOS MAX 1



ESPAÑOL

POS	CODIGO	DESCRIPCION	CANTIDAD	POS	CODIGO	DESCRIPCION	CANTIDAD
10-004	1633	JUNTA TÓRICA PARA 2 CLAVIJAS MACHO		10-335	S31012PK	FLOTADOR DEBAJO MOTOR 2 PK	
10-103	9602BK	TAPA INFERIOR CON BRIDA DEL RODILLO		10-336	201308-001	TAPA LATERAL GRIS430, 2 PK	
10-104	3393BK	RUEDA PEQUEÑA NEGRA		10-337	201328A-003PK	RUEDA COMPLETA XLS GRIS 2PK	
10-161	SPK-2026	PASADOR DE PLÁSTICO PARA RUEDAS IM		10-344	201323OR	ASA INFERIOR, ABS, NARANJA, PMS 159	
10-181	163401	TUERCA DE PLÁSTICO PARA CONECTOR (10-349	201318-002PK	RED DE SEGURIDAD, XLS, GRIS430, 1 PK	
10-307	201319-002PK	TUBO DE ESCAPE, XLS, IZQ/DER, GRIS, 1		20-001	3383	PASADOR DE EJE, NEGRO, CUERPO INFEF	
10-308	201326-002PK	VOLUTA, GRIS430, 2 PK		20-005	3429S	EJE, FIBRA DE VIDRIO 16,812" L "	
10-309	201321BL	SOPORTE INFERIOR, ABS, AZUL, PMS 274		20-043	201332GY1PK	SEPARADOR, GRIS4, 2 PK	
10-318	201306GY	SOPORTE RUEDA IZQUIERDA, GRIS, ABS,		20-308	201327W	ALETA PVC, SEMIRÍGIDA, BLANCA	
10-319	201304GY	TAPA SOPORTE RUEDA DERECHA, GRIS, /		30-007	A2260PK	TORNILLO 6X7/16 10 PK	
10-320	201301GY	ASIENTO EJE GRIS, ABS, PMS 431		30-017	A2606PK	ARANDELA DE PLÁSTICO PARA RUEDA 10F	
10-323	201303OR	CINTA DIRECCIÓN NARANJA, PP, PMS 159		30-037	3603	ARANDELA INTERMEDIA DE EJE	
10-326	201324BLPK	TAPA SUPERIOR AZUL 1PK		30-078	A2729PK	TORNILLO, S/S, 10-16, 1.25 4 PK	

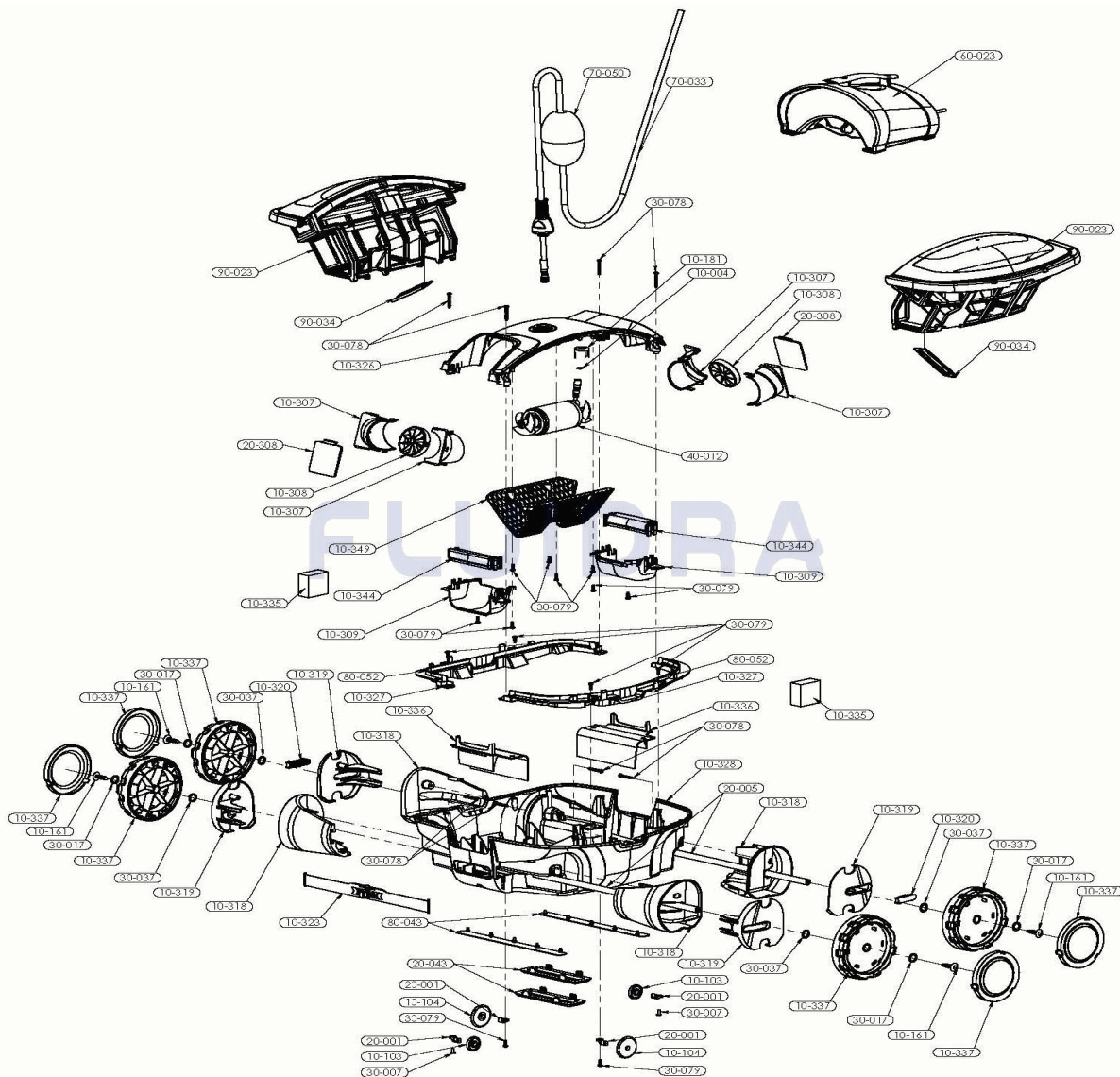
CODIGO **57350**

DESCRIPCION: LIMPIAFONDOS MAX 1

10-327	201331BL	EMBELLECEDOR, ABS, AZUL, PMS 2748	30-079	A2730PK	TORNILLO, S/S, 10-15, 0.50 2 PK
10-328	201302BL	CONJ. CARCASA	40-012	S1A6037	MOTOR BOMBA, 48VDC, DOBLE ASTA, PW,
60-023	SKPOWER05	FUENTE ALIMENTACION PREMIUM 48VDC	80-052	A4602PK	JUNTA XLS NEGRA 1PK
70-033	A1625009PK	CONJ. CABLE 2C/50" AZUL 1 PK	90-023	201317A-003	CONJ. CARTUCHO DE FILTRO, AZUL
70-050	1602GY	FLOTADOR, PLÁSTICO GRIS, PARA CABLE	90-034	201314-001	VALVULA ENTRADA ABS AZUL
80-043	201333-001PK	TAPETA DRENAJE, XLS, GRIS430, 2 PK			

CODE 57350

DESCRIPTION: NETTOYEUR DE FOND MAX 1



FRANCAIS

POS	CODE	DESCRIPTION	QUANTITE	POS	CODE	DESCRIPTION	QUANTITE
10-004	1633	JOINT TORIQUE, POUR 2 BROCHES MÂLE		10-335	S31012PK	FLOTTEUR SOUS MOTEUR 2 PK	
10-103	9602BK	ROULEAU, COUVERCLE INFÉRIEUR AVEC		10-336	201308-001	COUVERCLE SUPPORT ROUE, GRIS430, 2	
10-104	3393BK	ROUE, PETITE, NOIRE		10-337	201328A-003PK	(NOT DEFINED)	
10-161	SPK-2026	GOUPILLE, PLASTIQUE, POUR ROUES JET		10-344	201323OR	POIGNÉE INFÉRIÈRE, ABS, ORANGE, PM	
10-181	163401	VERROU DE CONNECTEUR, PLASTIQUE, F		10-349	201318-002PK	FILET DE SÉCURITÉ, XLS, GRIS 430, 1 PK	
10-307	201319-002PK	TUYAU ÉCHAPPEMENT, XLS, DROIT/GAUC		20-001	3383	GOUPILLE AXE, NOIR, CORPS INFÉRIEUR	
10-308	201326-002PK	VOLUTE, GRIS430, 2 PK		20-005	3429S	AXE, FIBRE DE VERRE 16.812" L "	
10-309	201321BL	PORT INFÉRIEUR ABS, BLEU, PMS 2748		20-043	201332GY1PK	ENTRETOISE, GRIS4, 2PK	
10-318	201306GY	SUPPORT ROUE GAUCHE, ABS, GRIS, PM		20-308	201327W	AILETTE, PVC, SEMI-RIGIDE, BLANC	
10-319	201304GY	COUVERCLE SUPPORT ROUE DROITE, AB		30-007	A2260PK	(NOT DEFINED)	
10-320	201301GY	SIÈGE AXE, ABS, GRIS, PMS 431		30-017	A2606PK	RONDELLE PLASTIQUE POUR ROUE 10PK	
10-323	201303OR	COURROIE DIRECTION, PP, ORANGE, PM		30-037	3603	RONDELLE INTERMÉDIAIRE AXE	
10-326	201324BLPK	(NOT DEFINED)		30-078	A2729PK	(NOT DEFINED)	

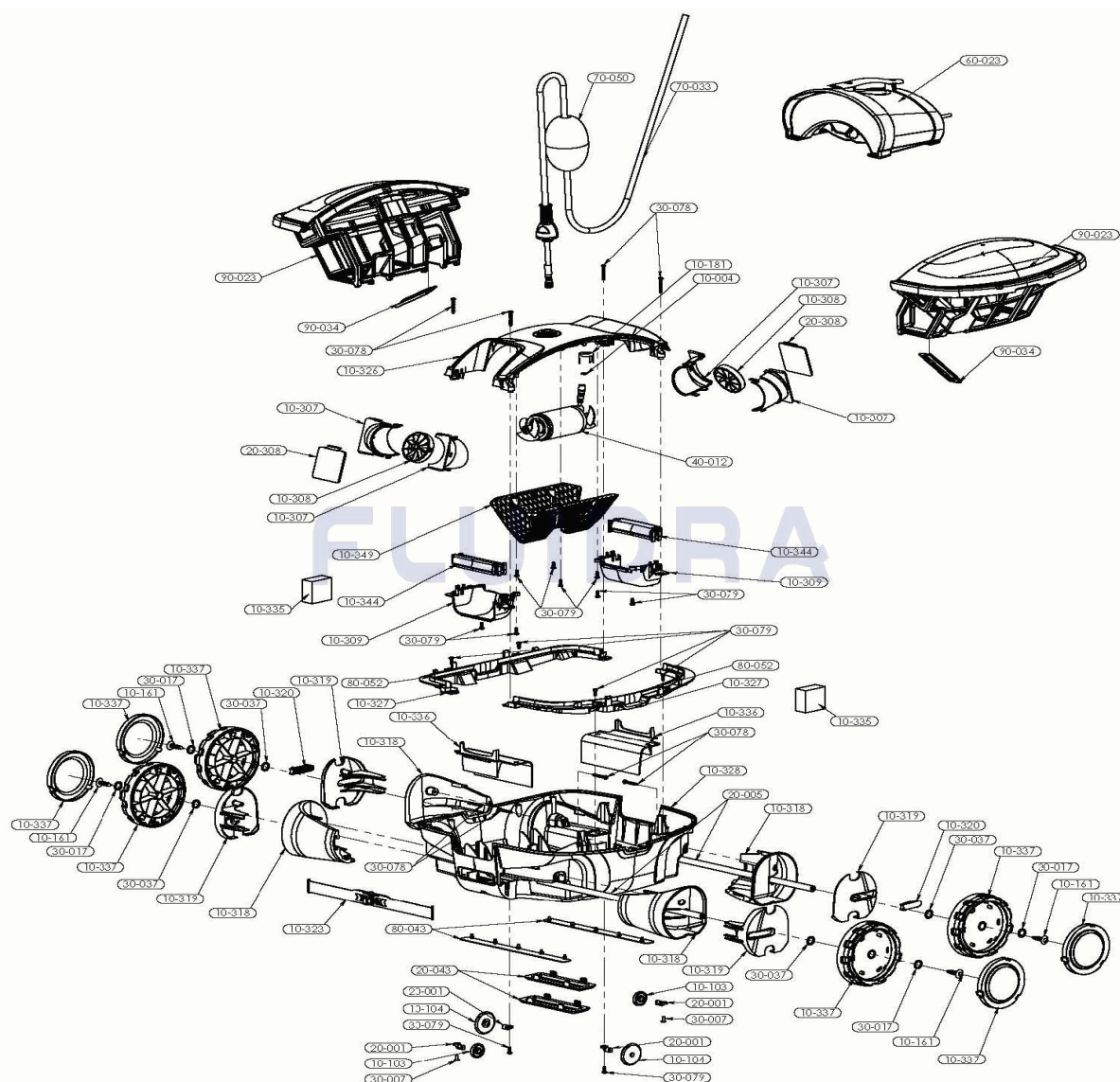
CODE **57350**

DESCRIPTION: **NETTOYEUR DE FOND MAX 1**

10-327	201331BL	ENJOLIVEUR, ABS, BLEU, PMS 2748	30-079	A2730PK	(NOT DEFINED)
10-328	201302BL	ENSEMBLE CAPOT	40-012	S1A6037	MOTEUR DE POMPE, 48VCC, ARBRE DOUE
60-023	SKPOWER05	BLOC D'ALIMENTATION PREMIUM 48VDC (80-052	A4602PK	(NOT DEFINED)
70-033	A1625009PK	CÂBLE, ENSEMBLE, 2C/50' BLEU 1 PK	90-023	201317A-003	ENSEMBLE CARTOUCHE FILTRANTE, BLEL
70-050	1602GY	FLOTTEUR, PLASTIQUE GRIS, POUR CÂBL	90-034	201314-001	VANNE ENTRÉE ABS BLEU
80-043	201333-001PK	VOLET VIDANGE, XLS, GRIS430, 2 PK			

CODE 57350

DESCRIPTION: POOL CLEANER MAX 1



ENGLISH

POS	CODE	DESCRIPTION	QUANTITY	POS	CODE	DESCRIPTION	QUANTITY
10-004	1633	O-RING, FOR 2 PIN MALE		10-335	S31012PK	FLOAT UNDER MOTOR 2 PK	
10-103	9602BK	ROLLER, BOTTOM LID WITH FLANGE		10-336	201308-001	WHEEL WELL SEAL, GREY430, 2 PK	
10-104	3393BK	WHEEL- BLACK-SMALL		10-337	201328A-003PK	WHEEL ASSEMBLY XLS GREY 2PK	
10-161	SPK-2026	PIN, PLASTIC, FOR JET WHEELS 2PK		10-344	201323OR	HANDLE BOTTOM, ABS, ORANGE, PMS 159	
10-181	163401	CONNECTOR LOCK, PLASTIC, FOR CIRCU		10-349	201318-002PK	SAFETY NET, XLS, GREY430, 1 PK	
10-307	201319-002PK	EXHAUST TUBE, XLS, RIGHT/LEFT, GREY,		20-001	3383	AXLE PIN, BLACK, 2235 BODY BOTTOM	
10-308	201326-002PK	VOLUTE, GREY430, 2 PK		20-005	3429S	AXLE, FIBER GLASS 16.812" L "	
10-309	201321BL	PORT BOTTOM, ABS, BLUE, PMS 2748		20-043	201332GY1PK	SPACER, GREY4, 2 PK	
10-318	201306GY	WHEEL WELL LEFT, ABS, GREY, PMS 431		20-308	201327W	FLAPPER, PVC, SEMI RIGID, WHITE	
10-319	201304GY	WHEEL WELL CAP R, ABS, GREY, PMS 431		30-007	A2260PK	SCREW 6X7/16 10 PK	
10-320	201301GY	AXLE SEAT, ABS, GREY, PMS 431		30-017	A2606PK	WHEEL WASHER PLASTIC 10PK	
10-323	201303OR	STEERING RIBBON, PP, ORANGE, PMS 15!		30-037	3603	FLAT DELRIN WASHER	
10-326	201324BLPK	TOP COVER BLUE 1PK		30-078	A2729PK	SCREW, S/S, 10-16, 1.25 4 PK	

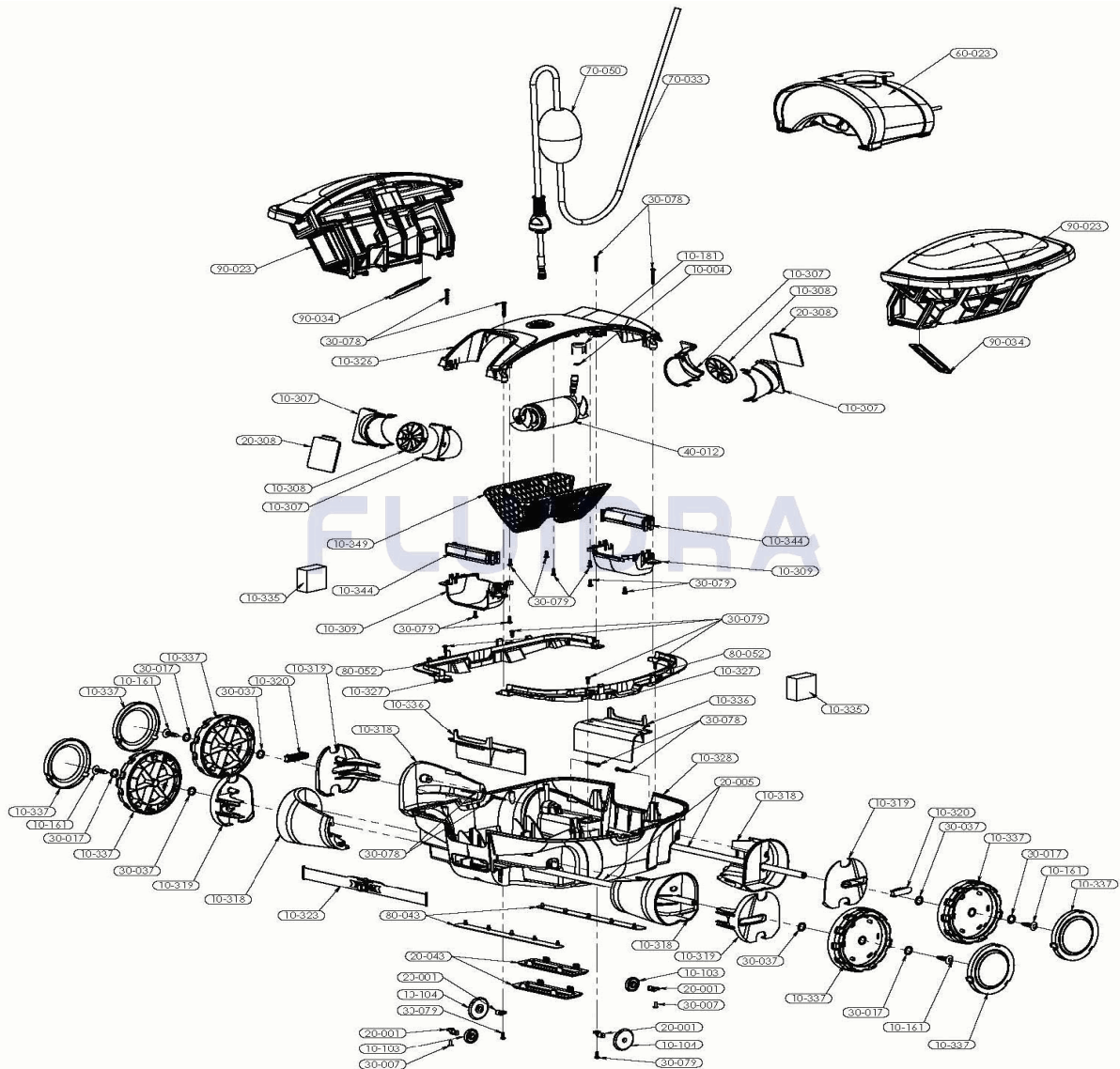
CODE **57350**

DESCRIPTION: **POOL CLEANER MAX 1**

10-327	201331BL	TRIM, ABS, BLUE, PMS 2748	30-079	A2730PK	SCREW, S/S, 10-15, 0.50 2 PK
10-328	201302BL	COVER SET	40-012	S1A6037	PUMP MOTOR, 48VDC, DOUBLE SHAFT, PV
60-023	SKPOWER05	POWER SUPPLY PREMIUM 48VDC (EU)	80-052	A4602PK	SEAL XLS BLACK 1PK
70-033	A1625009PK	CABLE, ASSY, 2C/50" BLUE 1 PK	90-023	201317A-003	FILTER CARTRIDGE ASSEMBLY, BLUE
70-050	1602GY	FLOAT, GREY PLASTIC, FOR CABLE/ROPE	90-034	201314-001	INLET VALVE ABS BLUE
80-043	201333-001PK	DRAINAGE FLAP, XLS, GREY430, 2 PK			

CODICE 57350

DESCRIZIONE: PULISCIFONDI MAX 1



ITALIANO

POS	CODICE	DESCRIZIONE	QUANTITA'	POS	CODICE	DESCRIZIONE	QUANTITA'
10-004	1633	GIUNTA TORICA PER 2 SPINE MASCHIO		10-335	S31012PK	GALLEGGIANTE SOTTO MOTORE 2 PK	
10-103	9602BK	COPERTURA INFERIORE CON FLANGIA DE		10-336	201308-001	COPERCHIO LATERALE GRIGIO 430, 2 PK	
10-104	3393BK	RUOTA PICCOLA NERA		10-337	201328A-003PK	(NOT DEFINED)	
10-161	SPK-2026	PASSANTE IN PLASTICA PER RUOTE JET		10-344	201323OR	MANIGLIA INFERIORE, ABS, ARANCIONE, P	
10-181	163401	DADO IN PLASTICA PER CONNETTORE CII		10-349	201318-002PK	RETE DI SICUREZZA, XLS, GRIGIA 430, 1 PI	
10-307	201319-002PK	TUBO DI SCARICO, XLS, DESTRO/SINISTR		20-001	3383	PASSANTE ASSE, NERO, CORPO INFERIOF	
10-308	201326-002PK	VOLUTA, GRIGIA 430, 2 PK		20-005	3429S	ASSE, VETRORESINA 16,812" L "	
10-309	201321BL	SUPPORTO INFERIORE, ABS, BLU, PMS 27		20-043	201332GY1PK	DISTANZIATORE, GRIGIO 4, 2 PK	
10-318	201306GY	SUPPORTO RUOTA SINISTRA, ABS, GRIGI		20-308	201327W	ALETTA, PVC, SEMI RIGIDA, BIANCA	
10-319	201304GY	COPERCHIO SUPPORTO RUOTA DESTRA,		30-007	A2260PK	(NOT DEFINED)	
10-320	201301GY	SEDILE ASSE, ABS, GRIGIO, PMS 431		30-017	A2606PK	RONDELLA DI PLASTICA PER RUOTA 10PK	
10-323	201303OR	BARRA DIREZIONALE, PP, ARANCIONE, PI		30-037	3603	RONDELLA INTERMEDIA DI ASSE	
10-326	201324BLPK	(NOT DEFINED)		30-078	A2729PK	(NOT DEFINED)	

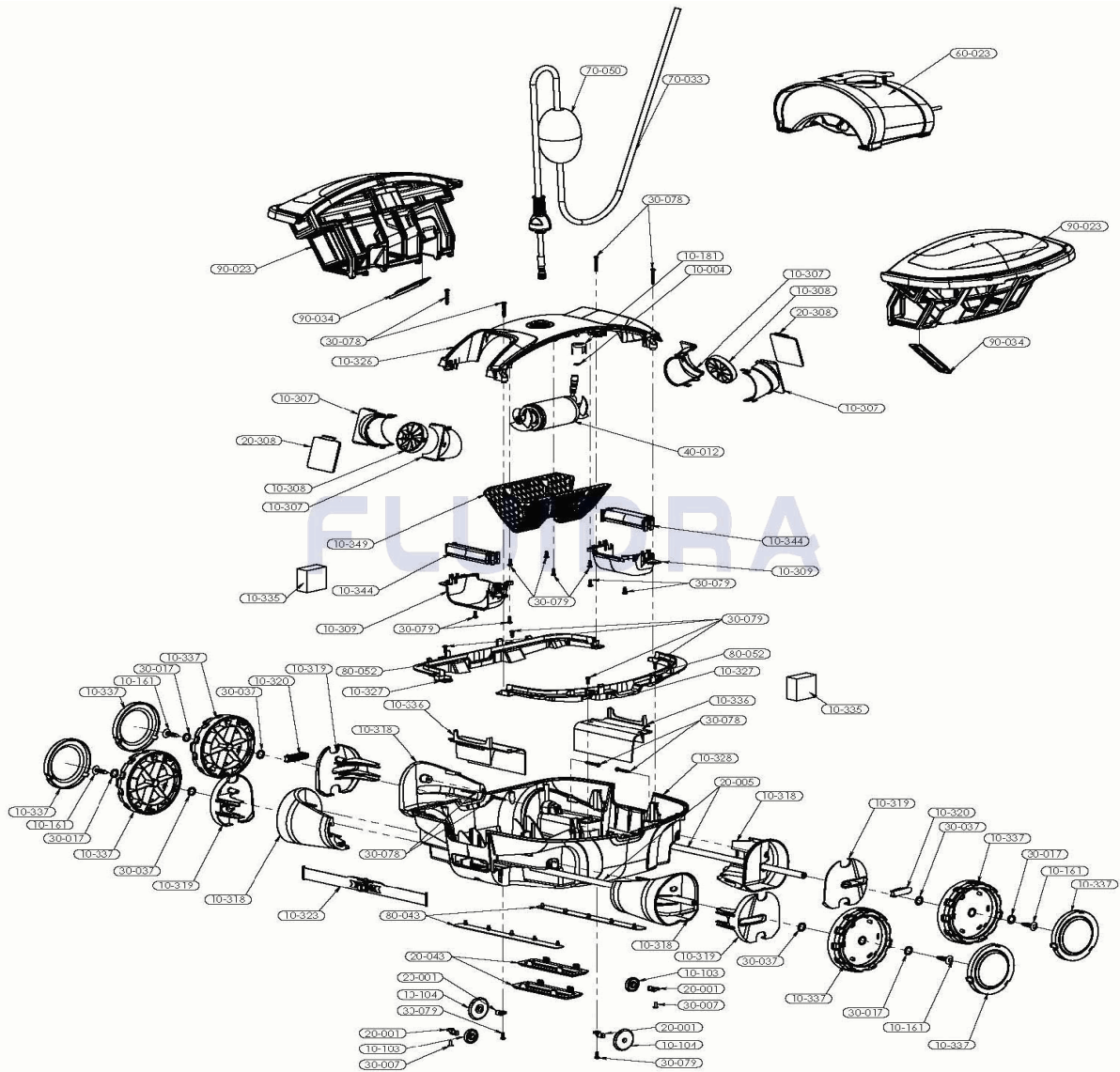
CODICE **57350**

DESCRIZIONE: **PULISCIFONDI MAX 1**

10-327	201331BL	PLACCA, ABS, BLU, PMS 2748	30-079	A2730PK	(NOT DEFINED)
10-328	201302BL	KIT CARCASSA	40-012	S1A6037	MOTORE POMPA, 48VDC, DOPPIO ASSE, P'
60-023	SKPOWER05	TRASFORMATORE PREMIUM 48VDC (EU)	80-052	A4602PK	(NOT DEFINED)
70-033	A1625009PK	CAVO 2C/50" BL 1 PK	90-023	201317A-003	SET CARTUCCIA FILTRO, BLU
70-050	1602GY	GALLEGGIANTE, PLASTICA GRIGIA, PER C	90-034	201314-001	VALVOLA DI ENTRATA ABS BLU
80-043	201333-001PK	ALETTA DRENAGGIO, XLS, GRAY 430, 2 PK			

CODE 57350

BESCHREIBUNG: BODENREINIGER MAX 1



DEUTSCH

POS	CODE	BESCHREIBUNG	MENGE	POS	CODE	BESCHREIBUNG	MENGE
10-004	1633	DICHTUNG FÜR STECKER 2 STIFTE		10-335	S31012PK	SCHWIMMER UNTER MOTOR 2 PK	
10-103	9602BK	ABDECKUNG UNTEN MIT FLANSCH ROLLE		10-336	201308-001	DICHTUNG RADHALTERUNG GRAU430 2 PI	
10-104	3393BK	RAD KLEIN SCHWARZ		10-337	201328A-003PK	(NOT DEFINED)	
10-161	SPK-2026	STIFT FÜR ANTRIEBSRÄDER KUNSTSTOFI		10-344	201323OR	GRIFF UNTEN ABS ORANGE PMS 159	
10-181	163401	ANSCHLUSSMUTTER KUNSTSTOFF FÜR F		10-349	201318-002PK	SICHERHEITSNETZ XLS GRAU430 1 PK	
10-307	201319-002PK	ROHR AUSGANG XLS RECHTS/LINKS GRA		20-001	3383	ACHSENSTIFT SCHWARZ 2235 GEHÄUSE L	
10-308	201326-002PK	GITTER AUSGANG GRAU430 2 PK		20-005	3429S	ACHSE GLASFASER 16,812" "	
10-309	201321BL	HALTERUNG UNTEN ABS BLAU PMS 2748		20-043	201332GY1PK	DISTANZSTÜCK GRAU4 2 PK	
10-318	201306GY	RADHALTERUNG LINKS ABS GRAU PMS 4		20-308	201327W	FLOSSE PVC HALBHART WEISS	
10-319	201304GY	DECKEL RADHALTERUNG RECHTS ABS GI		30-007	A2260PK	(NOT DEFINED)	
10-320	201301GY	ACHSENSITZ ABS GRAU PMS 431		30-017	A2606PK	UNTERLEGSCHEIBE RAD KUNSTSTOFF 10	
10-323	201303OR	LENKRIEMEN PP ORANGE PMS 159		30-037	3603	UNTERLEGSCHEIBE MITTIG ACHSE	
10-326	201324BLPK	(NOT DEFINED)		30-078	A2729PK	(NOT DEFINED)	

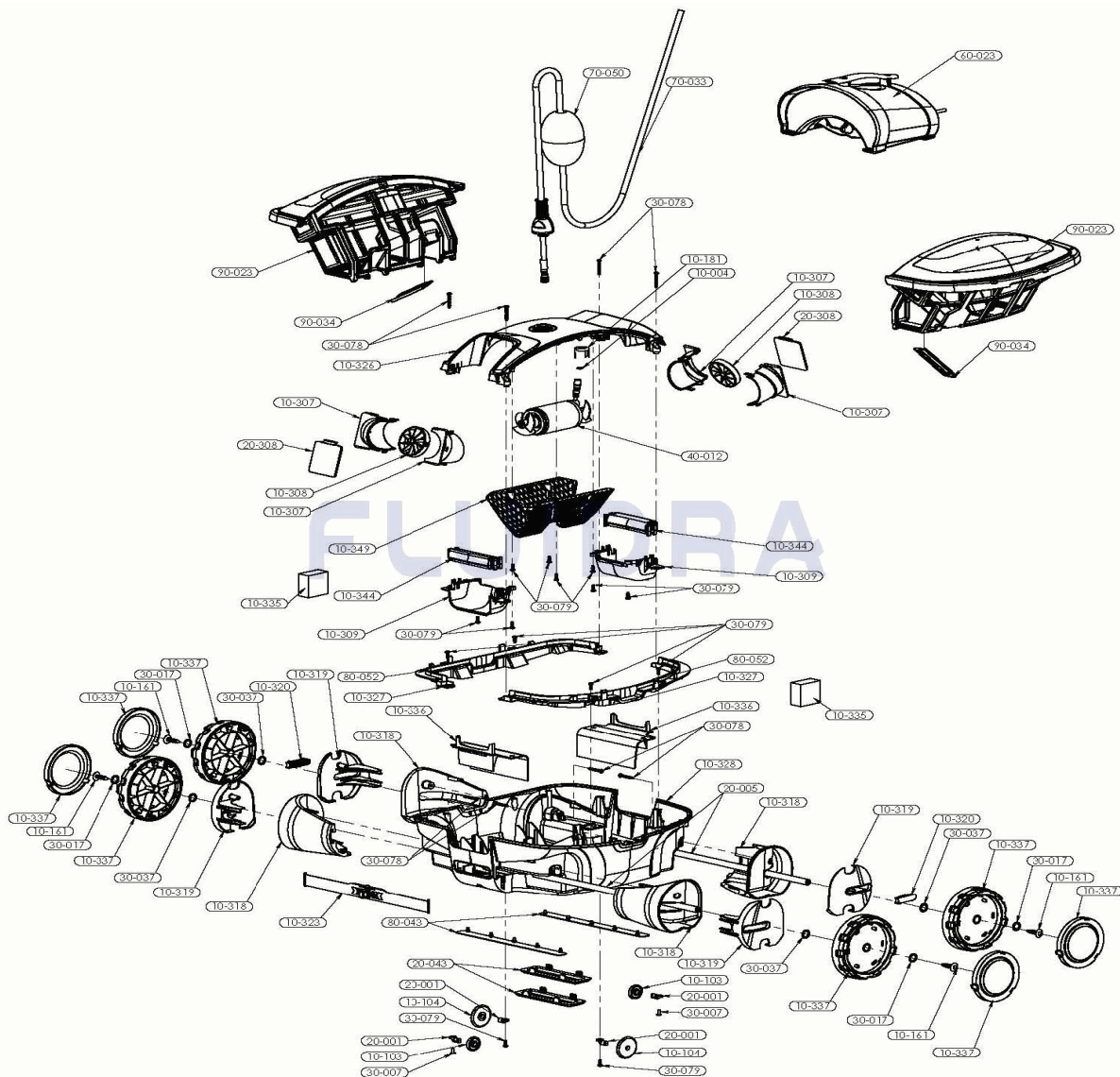
CODE **57350**

BESCHREIBUNG: **BODENREINIGER MAX 1**

10-327	201331BL	LASCHE ABS BLAU PMS 2748	30-079	A2730PK	(NOT DEFINED)
10-328	201302BL	ABDECKUNG	40-012	S1A6037	MOTOR PUMPE 48 VDC DOPPELSCHAFT P
60-023	SKPOWER05	TRASFORMATOR PREMIUM 48VDC (EU)	80-052	A4602PK	(NOT DEFINED)
70-033	A1625009PK	SET KABEL 2C/50" BLA 1 PK	90-023	201317A-003	SET FILTERKARTUSCHE BLAU
70-050	1602GY	SCHWIMMER KABEL KUNSTSTOFF GRAU	90-034	201314-001	EINGANGSVENTIL ABS BLAU
80-043	201333-001PK	ABDECKUNG AUSLASS XLS GRAU430 2 P			

CODIGO 57350

DESCRIÇÃO: LIMPADOR DE FUNDOS MAX 1



PORTUGUES

POS	CODIGO	DESCRIÇÃO	JANTIDADE	POS	CODIGO	DESCRIÇÃO	JANTIDADE
10-004	1633	JUNTA PARA 2 PINOS		10-335	S31012PK	BOIA DEBAIXO MOTOR 2 PK	
10-103	9602BK	TAMPA INFERIOR COM FLANGE DO CILINDRO		10-336	201308-001	TAMPA LATERAL CINZA430, 2 PK	
10-104	3393BK	RODA PEQUENA PRETA		10-337	201328A-003PK	(NOT DEFINED)	
10-161	SPK-2026	PASSADOR DE PLÁSTICO PARA RODAS IV		10-344	201323OR	PEGA INFERIOR, ABS, LARANJA, PMS 159	
10-181	163401	PORCA DE PLÁSTICO PARA CONECTOR CIF		10-349	201318-002PK	REDE DE SEGURANÇA, XLS, CINZA430, 1 PK	
10-307	201319-002PK	TUBO DE ESCAPE, XLS, ESQ./DIR., CINZENTO		20-001	3383	PASSADOR DE EIXO, PRETO, CORPO INFERIOR	
10-308	201326-002PK	VOLUTA, CINZA430, 2 PK		20-005	3429S	EIXO, FIBRA DE VIDRO 16,812" L "	
10-309	201321BL	SUPORTE INFERIOR, ABS, AZUL, PMS 274		20-043	201332GY1PK	SEPARADOR, CINZA, 2 PK	
10-318	201306GY	SUPORTE RODA ESQUERDA, CINZENTO, 1 PK		20-308	201327W	BARBATANA PVC, SEMIRRÍGIDA, BRANCA	
10-319	201304GY	TAMPA SUPORTE RODA DIREITA, CINZENTO		30-007	A2260PK	(NOT DEFINED)	
10-320	201301GY	ASSENTO EIXO CINZENTO, ABS, PMS, 431		30-017	A2606PK	ANILHA DE PLÁSTICO PARA RODA 10PK	
10-323	201303OR	CINTA DO VOLANTE LARANJA, PP, PMS, 159		30-037	3603	ANILHA INTERMÉDIA DO EIXO	
10-326	201324BLPK	(NOT DEFINED)		30-078	A2729PK	(NOT DEFINED)	

CODIGO 57350

DESCRIÇÃO: LIMPADOR DE FUNDOS MAX 1

10-327	201331BL	PLACA DECORATIVA, ABS, AZUL, PMS 274:	30-079	A2730PK	(NOT DEFINED)
10-328	201302BL	CONJ. CARCASA	40-012	S1A6037	MOTOR BOMBA, 48 VDC, POLO DUPLO, PW
60-023	SKPOWER05	FONTE ALIMENTAÇÃO PREMIUM 48VDC (E	80-052	A4602PK	(NOT DEFINED)
70-033	A1625009PK	CONJ. CABO 2C/50" AZU 1 PK	90-023	201317A-003	CONJ. CARTUCHO DE FILTRO, AZUL
70-050	1602GY	BOIA, PLÁSTICO CINZENTO, PARA CABO/C	90-034	201314-001	VÁLVULA ENTRADA ABS AZUL
80-043	201333-001PK	TAMPA DRENAGEM, XLS, CINZ430, 2 PK			