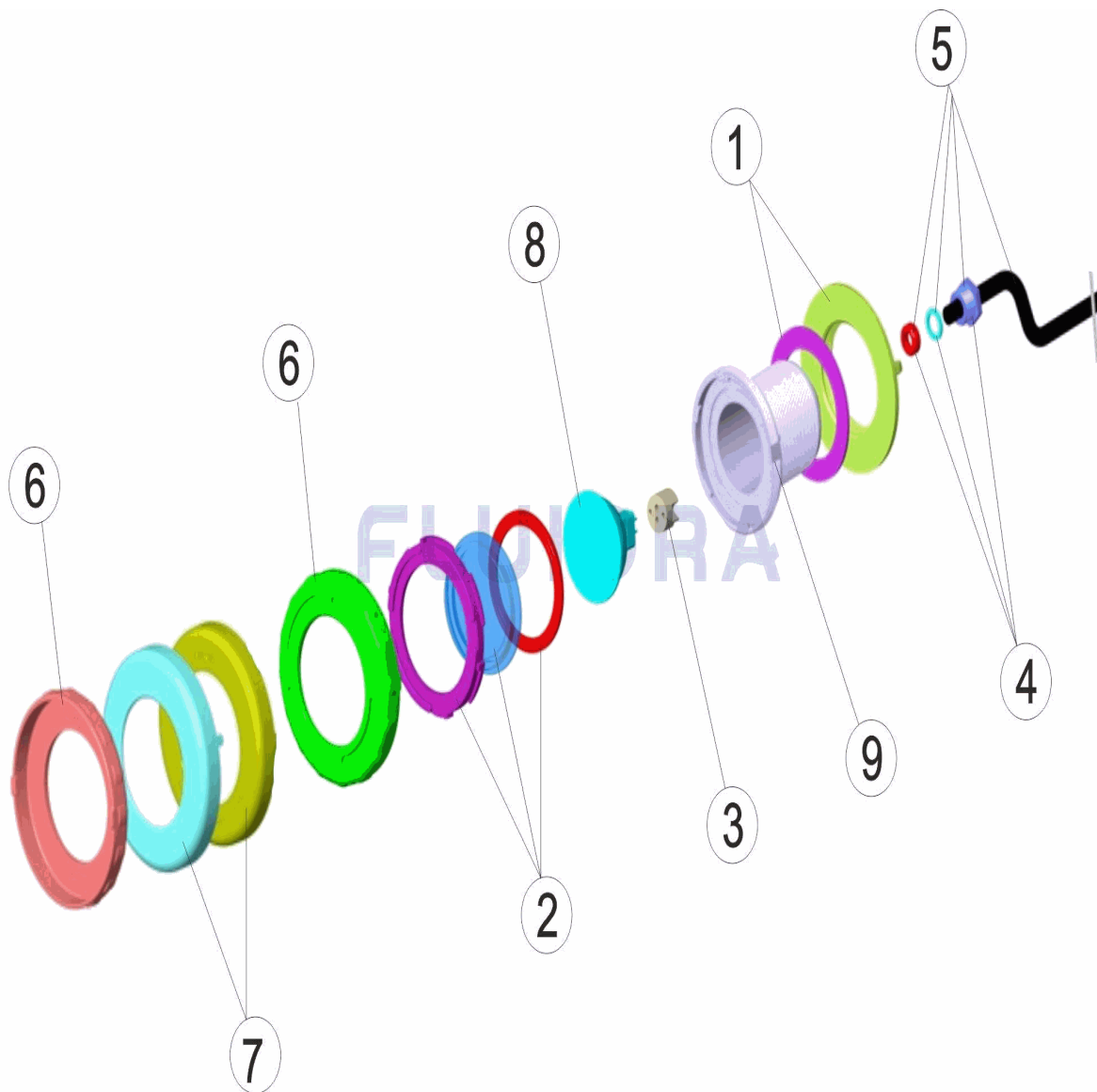


CODIGO **33709, 36647**

DESCRIPCION: **PROYECTOR MINI EMB. BLANCO/INOX/PARA SPAS**



**ESPAÑOL**

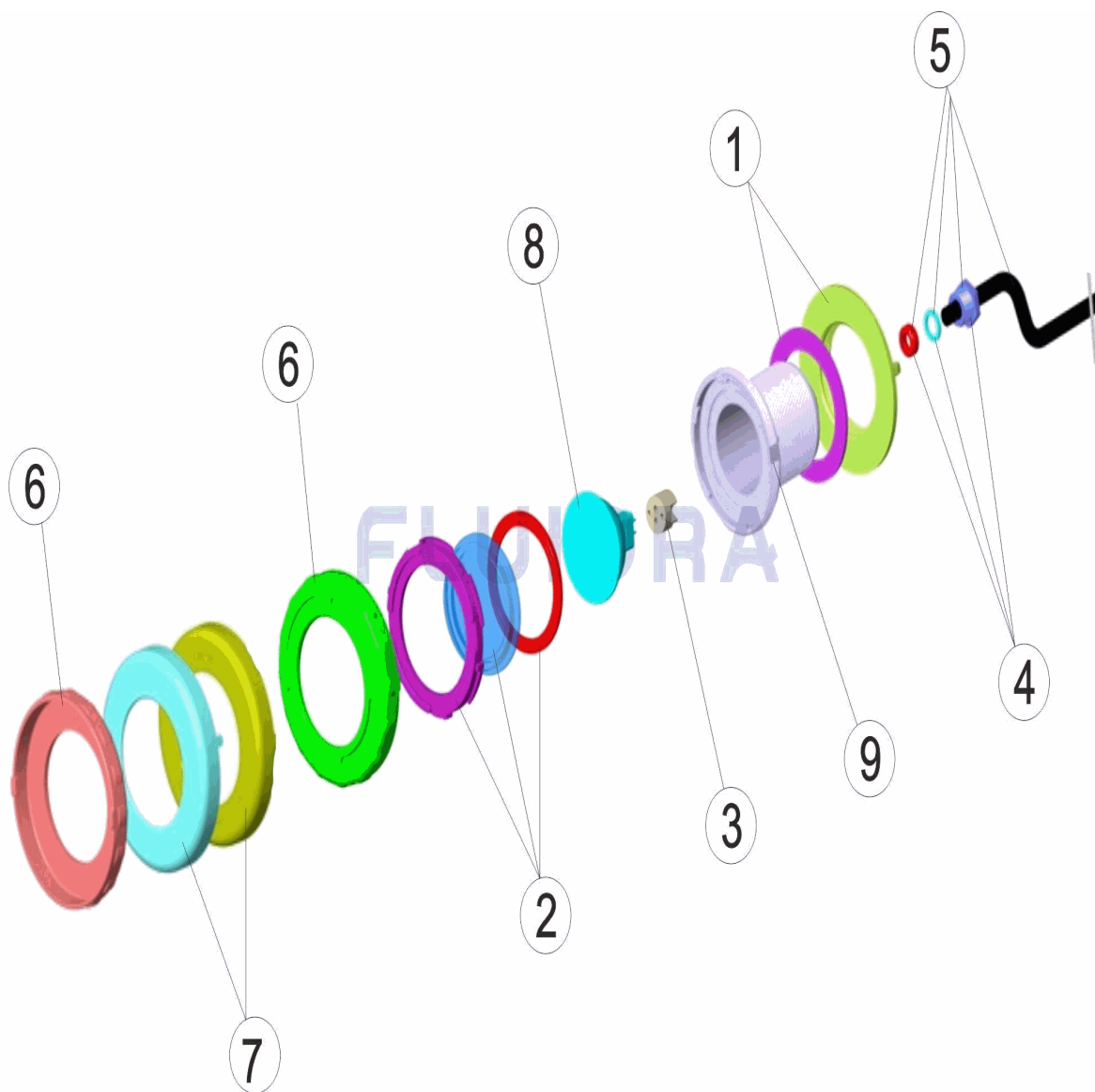
POS	CODIGO	DESCRIPCION	CANTIDAD	POS	CODIGO	DESCRIPCION	CANTIDAD
1	4403015201	TUERCA FIJACION CON JUNTA		6	* 4403012101	EMBELECEDOR DICROICO	
2	4403012003	LENTE COMPLETA		7	* 4403014801	EMBELECEDOR PROYECTOR MINI INOX.	
3	4403011407	PORTALAMPARAS		8	4403010074	LAMPARA HALOGENA ALUMINIZADA	
4	4403010107	PRENSAESTOPAS PANTALLA		9	33709R0001	CUERPO PROYECTOR	
5	4403014103	CABLE PROYECTOR MINI 2X1,5X250					

CODIGO **33709, 36647**DESCRIPCION: **PROYECTOR MINI EMB. BLANCO/INOX/PARA SPAS****OBSERVACIONES**

POS	CODIGO	OBSERVACIONES
6	* 4403012101	PARA: 33709
7	* 4403014801	PARA: 36647

CODE 33709, 36647

DESCRIPTION: PROJECTEUR MINI ENJ. BLANC/INOX/POUR SPAS



FRANCAIS

POS	CODE	DESCRIPTION	QUANTITE	POS	CODE	DESCRIPTION	QUANTITE
1	4403015201	ECROU DE FIXATION AVEC JOINT		6	* 4403012101	ENJOLIVEUR ET OPTIQUE	
2	4403012003	LENTILLE COMPLETE		7	* 4403014801	ENJOLIVEUR DE PROJECTEUR MINI INOX.	
3	4403011407	PORTE-LAMPE		8	4403010074	LAMPE HALOGENE ALUMINISE	
4	4403010107	PRESSE-ETOUPE		9	33709R0001	CORPS DU PROJECTEUR	
5	4403014103	CABLE PROJECTEUR MINI 2X1,5X250					

CODE **33709, 36647**

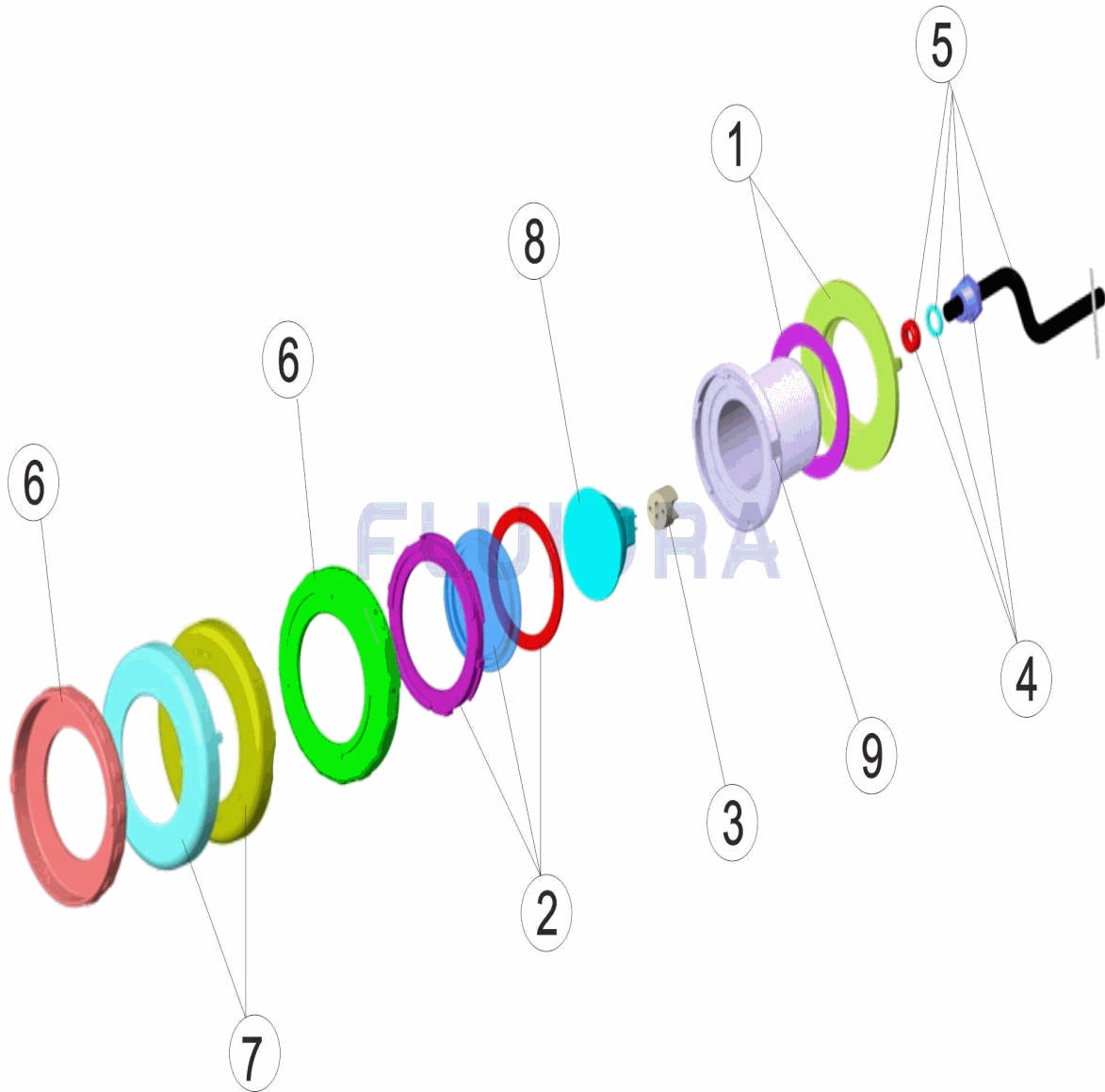
DESCRIPTION: **PROJECTEUR MINI ENJ. BLANC/INOX/POUR SPAS**

**OBSERVATIONS**

POS	CODE	OBSERVATIONS
6	* 4403012101	POUR: 33709
7	* 4403014801	POUR: 36647

CODE **33709, 36647**

DESCRIPTION: **MINI LIGHT EMB. WHITE / STAINLESS STEEL / FOR SPAS**



**ENGLISH**

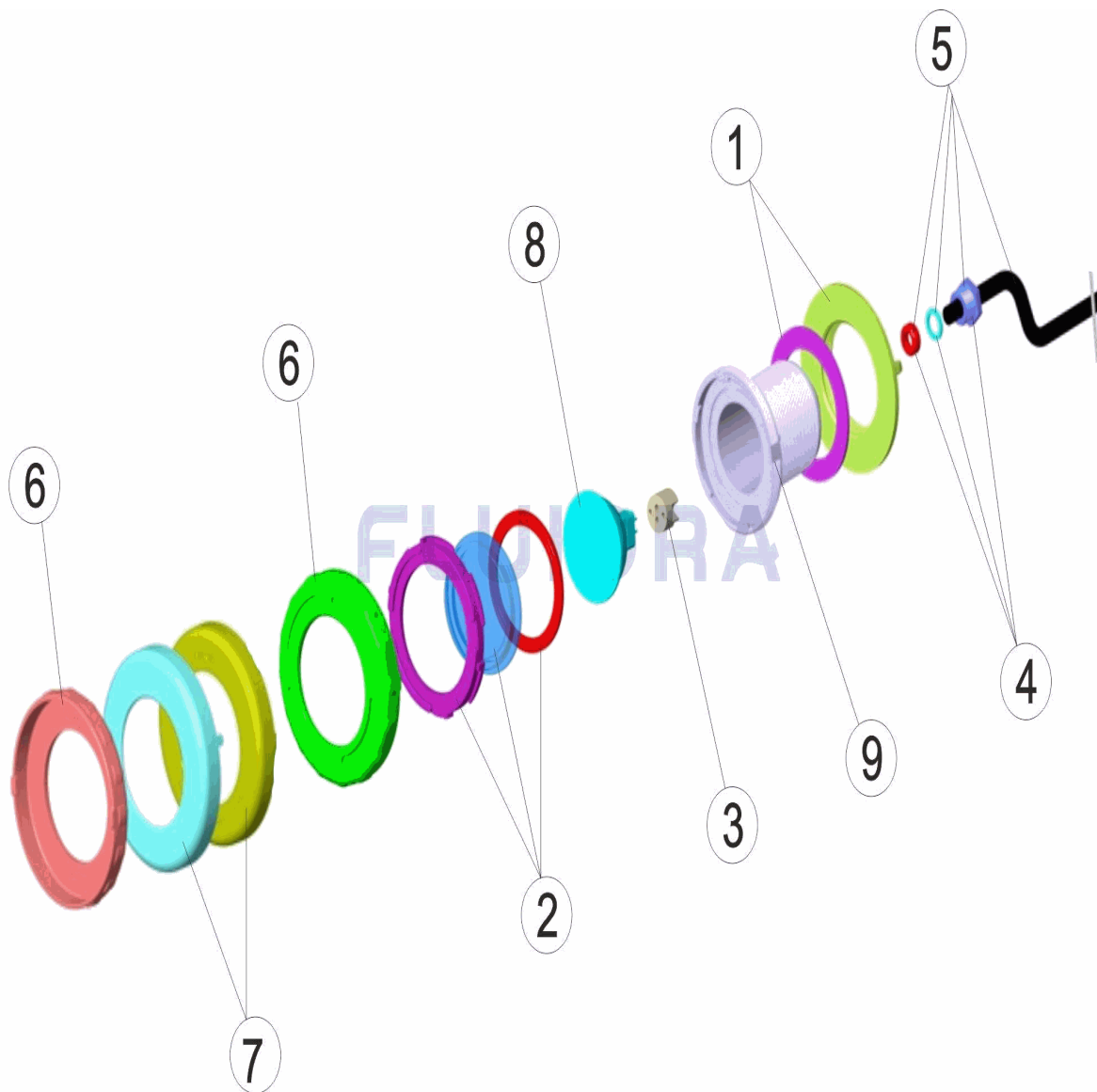
POS	CODE	DESCRIPTION	QUANTITY	POS	CODE	DESCRIPTION	QUANTITY
1	4403015201	FIXING NUT AND GASKET		6	* 4403012101	DICHRO FACEPLATE	
2	4403012003	LENS KIT		7	* 4403014801	S. S. LIGHT FACEPLATE MINI	
3	4403011407	LAMP HOLDER		8	4403010074	LAMP HALOGEN ALUMINIZED	
4	4403010107	LIGHT PACKING GLAND		9	33709R0001	LAMP BODY PLASTIC	
5	4403014103	CABLE UWL MINI 2X1,5X250					

CODE                    **33709, 36647**DESCRIPTION: **MINI LIGHT EMB. WHITE / STAINLESS STEEL / FOR SPAS****OBSERVATIONS**

POS	CODE	OBSERVATIONS
6	* 4403012101	FOR: 33709
7	* 4403014801	FOR: 36647

CODICE **33709, 36647**

DESCRIZIONE: **PROIETTORE MINI PLACCA BIANCA/INOX PER SPA**



**ITALIANO**

POS	CODICE	DESCRIZIONE	QUANTITA'	POS	CODICE	DESCRIZIONE	QUANTITA'
1	4403015201	GHIERA FISSAGGIO CON GUARNIZIONE		6	* 4403012101	FLANGIA FARO DICROICO	
2	4403012003	LENTE COMPLETA		7	* 4403014801	ANELLO FRONTALE FARO MINI INOX.	
3	4403011407	PORTALAMPADE		8	4403010074	LAMPADA ALOGENA ALLUMINATO	
4	4403010107	PRESSACAVI SCHERMO		9	33709R0001	CORPO PROIETTORE	
5	4403014103	CAVO 2X1,5X250 FARO MINI					

**CODICE 33709, 36647**

**DESCRIZIONE: PROIETTORE MINI PLACCA BIANCA/INOX PER SPA**

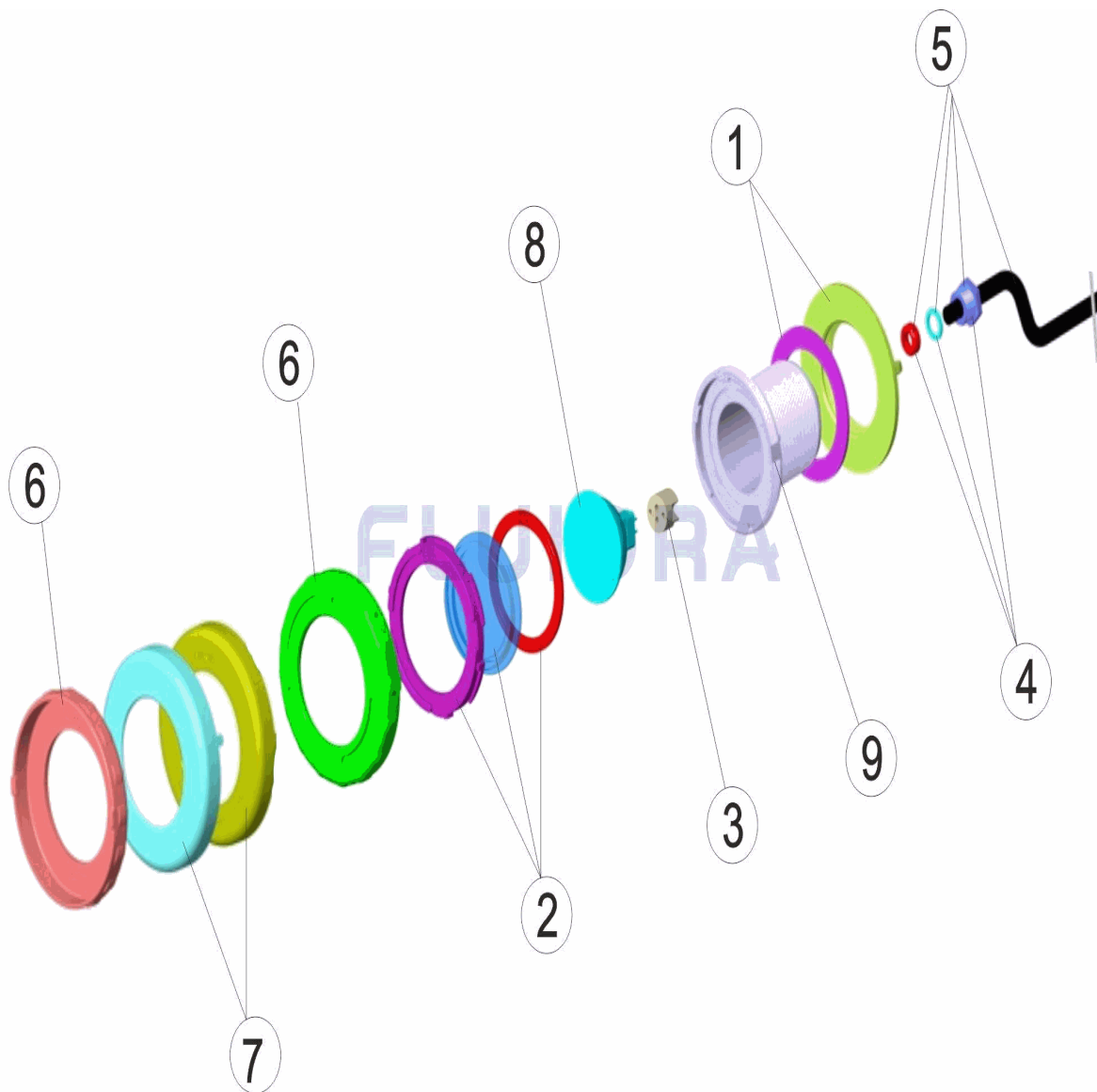
**OSSERVAZIONI**

POS	CODICE	OSSERVAZIONI
6	* 4403012101	PER: 33709
7	* 4403014801	PER: 36647



CODE **33709, 36647**

BESCHREIBUNG: **UWS MINI BLENDE WEISS/EDELSTAHL/SPAS**



**DEUTSCH**

POS	CODE	BESCHREIBUNG	MENGE	POS	CODE	BESCHREIBUNG	MENGE
1	4403015201	FIXIERMUTTER UND DICHUNG		6	* 4403012101	BLLENDE KALTLICHT	
2	4403012003	LINSE KOMPLETT		7	* 4403014801	BLLENDE MINI-UWS EDELSTAHL	
3	4403011407	LAMPENFASSUNG		8	4403010074	LAMPE HALOGEN ALUMINUM	
4	4403010107	QUETSCHVERSCHRAUBUNG		9	33709R0001	GEHÄUSE UWS	
5	4403014103	MINI UWS-KABEL 2 X 1,5 X 250					

CODE **33709, 36647**

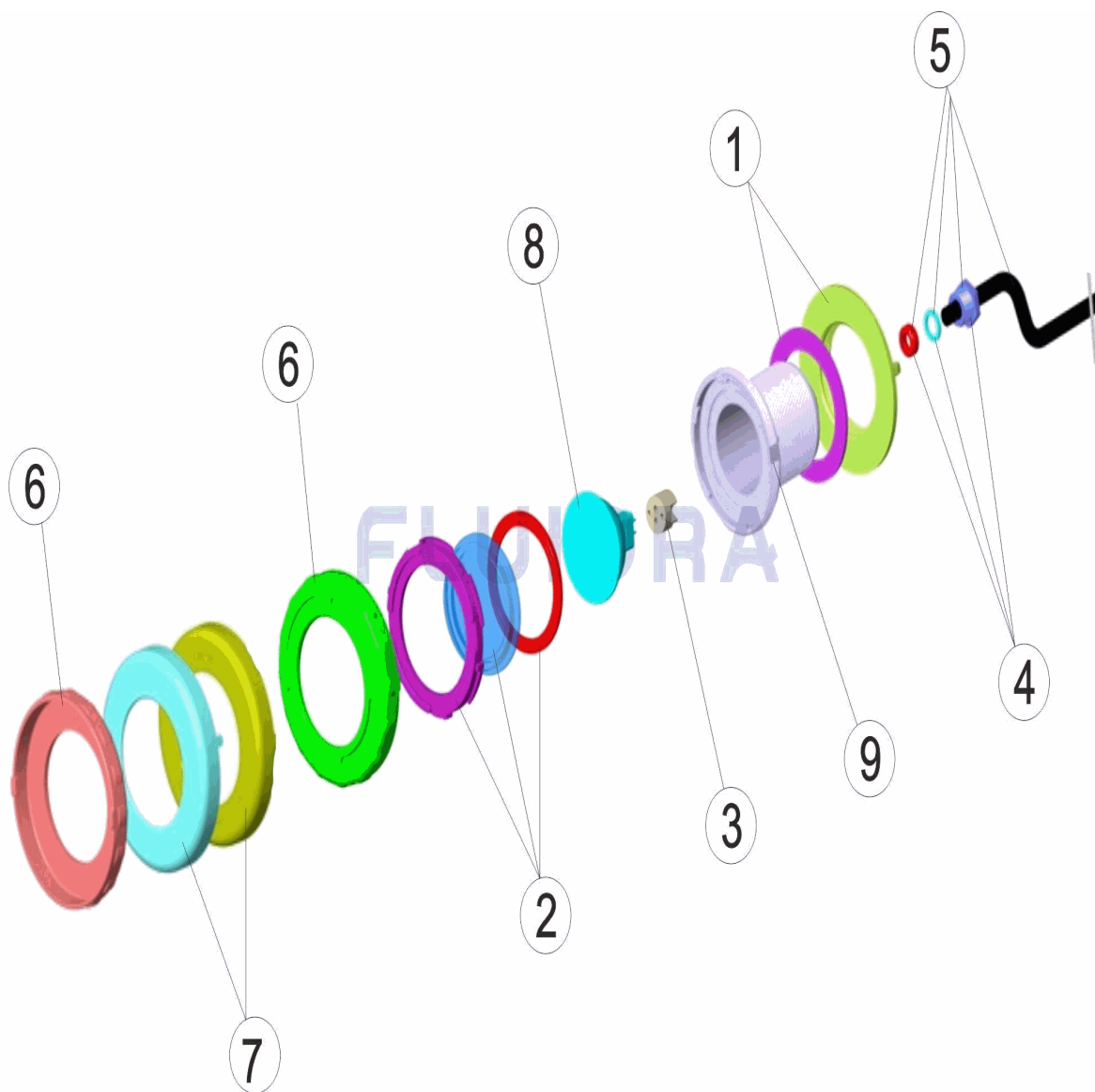
BESCHREIBUNG: **UWS MINI BLENDE WEISS/EDELSTAHL/SPAS**

**HINWEISE**

POS	CODE	HINWEISE
6	* 4403012101	FÜR: 33709
7	* 4403014801	FÜR: 36647

CODIGO **33709, 36647**

DESCRIÇÃO: **PROJECTOR MINI P. DEC. BRANCO/INOX/PARA SPAS**



**PORTUGUES**

POS	CODIGO	DESCRIÇÃO	JANTIDADE	POS	CODIGO	DESCRIÇÃO	JANTIDADE
1	4403015201	PORCA FIXAÇÃO COM JUNTA		6	* 4403012101	EMBELEZADOR DICROICO	
2	4403012003	LENTE COMPLETA		7	* 4403014801	EMBELEZADOR PROJECTOR MINI INOX.	
3	4403011407	PORTA-LÂMPADA		8	4403010074	LÂMPADA HALÓGENA ALUMINIZADA	
4	4403010107	BUCIN LENTE		9	33709R0001	CORPO PROJECTOR	
5	4403014103	CABO PROJECTOR MINI 2X1,5X250					

CODIGO **33709, 36647**DESCRIÇÃO: **PROJECTOR MINI P. DEC. BRANCO/INOX/PARA SPAS****OBSERVACÕES**

POS	CODIGO	OBSERVACÕES
6	* 4403012101	PARA: 33709
7	* 4403014801	PARA: 36647