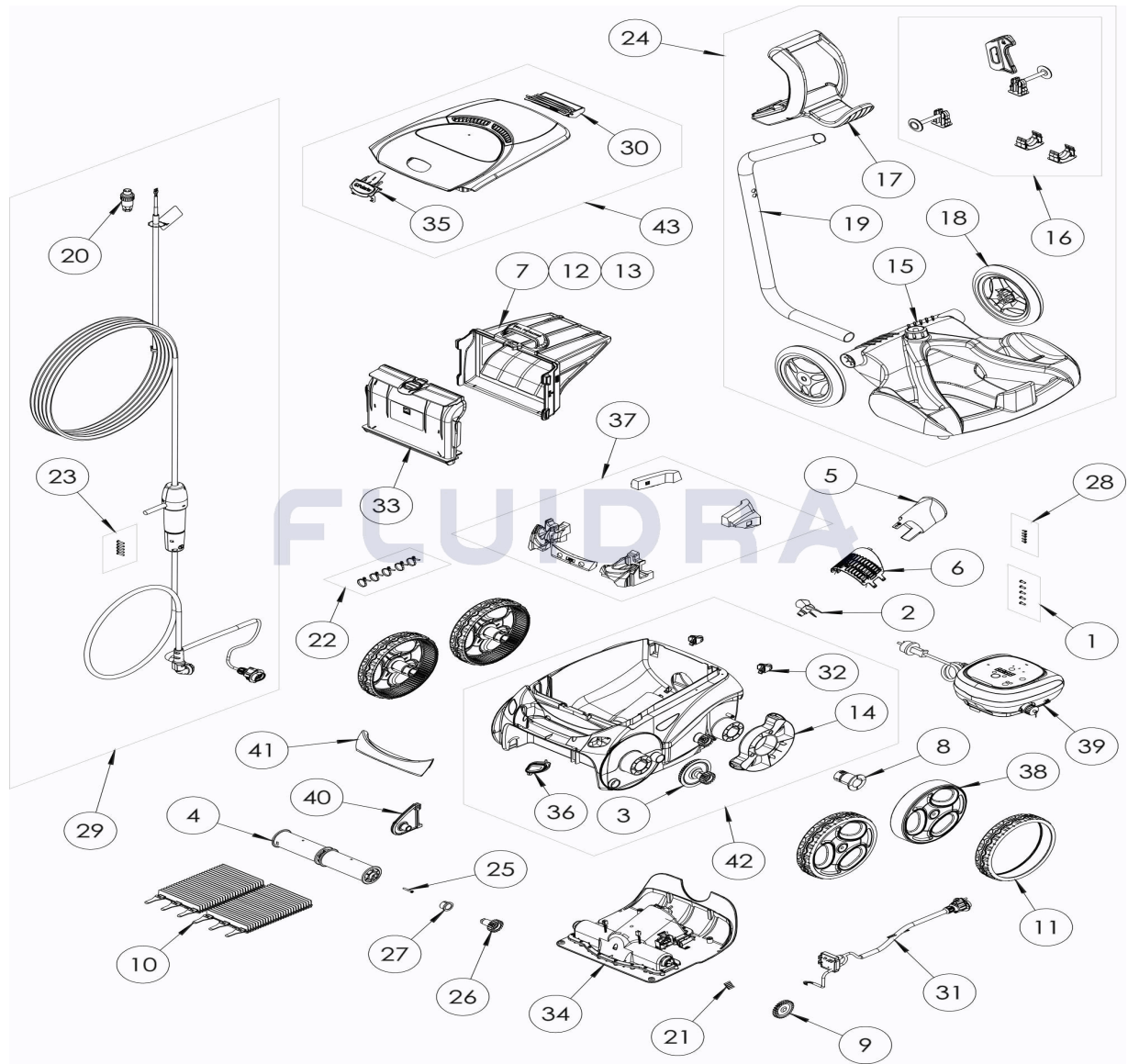


CODIGO

WR000427

 DESCRIPCION: **W 655**

ESPAÑOL

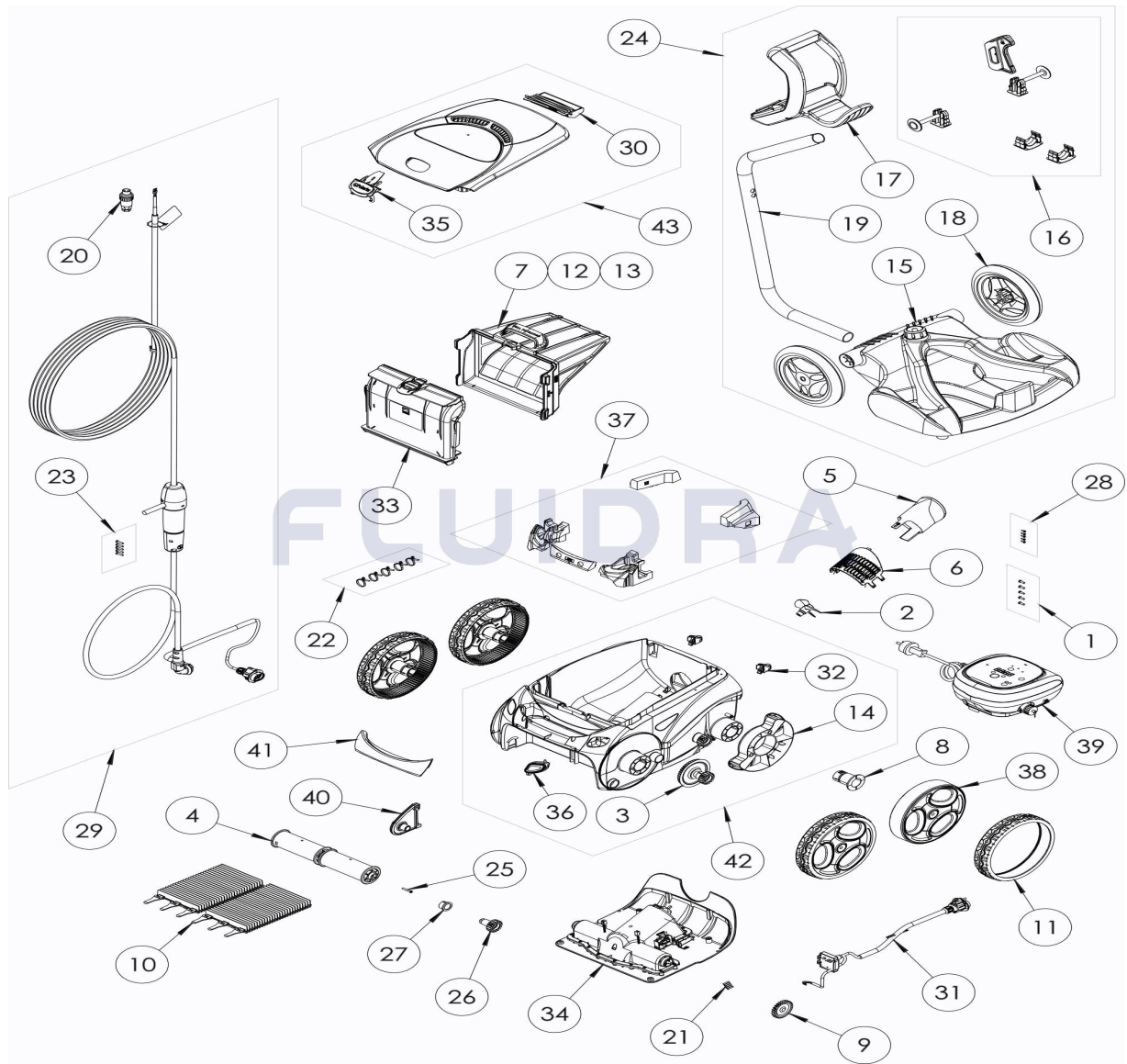
POS	CODIGO	DESCRIPCION	CANTIDAD	POS	CODIGO	DESCRIPCION	CANTIDAD
1	R0516700	TORNILLO 4*12 MM (PACK DE 5 UN.)	1	16	R0564900	KIT ACCESORIOS CARRO	1
2	R0517000	HÉLICE	1	17	R0565000	EMPUÑADURA CARRO DE TRANSPORTE	1
3	R0517200	CJTO.TRANSMISIÓN	4	18	R0565100	RUEDAS CARRO DE TRANSPORTE (Pack 2	1
4	R0517400	RODILLO PORTACEPILLOS (Pack 2 UN)	1	19	R0565200	TUBO CARRO DE TRANSPORTE	1
5	R0517500	CANALIZADOR DE FLUJO	1	20	R0565600	CONECTOR DE CABLE 4 PINS	1
6	R0517600	MALLA PROTECCIÓN	1	21	R0567800	CLIP FIJADOR 3*16 MM (Pack 5 UN)	1
7	R0517800	DEPÓSITO DE LIMO/ARENA FINA GP	1	22	R0567900	ABRAZADERAS CABLE FLOTANTE (Pack 5	1
8	R0518500	CASQUILLO COJINETE RUEDA GP	4	23	R0608500	TORNILLO 4*16 MM (PACK DE 5 UN	1
9	R0518800	PIÑÓN 27 DIENTES (Pack 2 UN)	1	24	R0609100	CARRO V	1
10	R0528900	CEPILLOS GP (PACK DE 2 UN)	1	25	R0638900	TORNILLO 4*25 MM (Pack 5 UN)	1
11	R0529300	NEUMÁTICO GRANDE NEGRA GP	4	26	R0639000	PIÑÓN 17 DIENTES (Pack 2 UN)	1
12	R0535800	DEPÓSITO DE LIMO/ARENA ULTRAFINA GF	1	27	R0639100	CASQUILLO EXTERIOR (Pack 2 UN)	1
13	R0535900	DEPÓSITO PARA USO GENERAL GP	1	28	R0639200	TORNILLO 2.9*9.5 MM (Pack 5 UN)	1

CODIGO **WR000427**DESCRIPCION: **W 655**

14	R0540300	PROTECTOR DE RUEDA	2	29	R0726600	CABLE FLOTANTE SWIVEL 18M	1
15	R0564800	BASE CARRO DE TRANSPORTE	1	30	R0863200	CONJUNTO DE FLOTADOR TRASERO	1
31	R0863300	BLOQUE DE SENSORES MONTADOS	1	38	R0911100	RUEDAS	4
32	R0864900	CLIP FIJACIÓN (PACK 2 UN)	1	39	R0911200	UNIDAD DE CONTROL TIPO 5 P	1
33	R0865100	SOPORTE FILTRO	1	40	R0959500	CLIP FIJACIÓN DE RODILLOS, GRIS CLARC	1
34	R0865400	BLOQUE MOTOR TIPO 2	1	41	R0959600	EMPUÑADURA, AZUL OSCURO	1
35	R0867000	CIERRE TAPA POLARIS	1	42	R0959700	CARCASA COMPLETA, GRIS CLARO	1
36	R0867100	TAPA TRANSPARENTE DE SENSORES	1	43	R0959900	TAPA COMPLETA, GRIS CLARO	1
37	R0870100	FLOTADOR	1				

CODE **WR000427**

DESCRIPTION: **W 655**



FRANCAIS

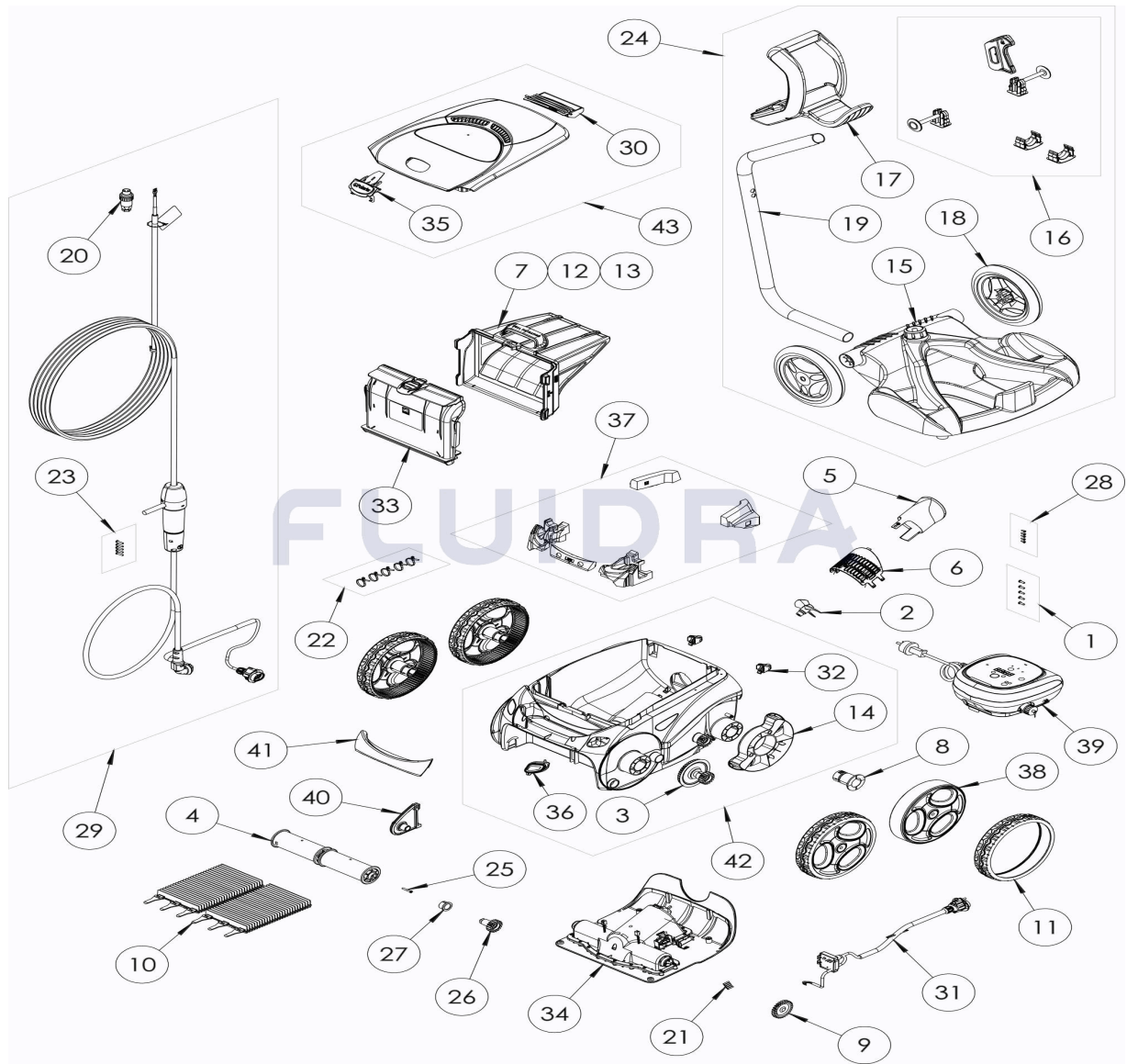
POS	CODE	DESCRIPTION	QUANTITE	POS	CODE	DESCRIPTION	QUANTITE
1	R0516700	VIS 4*12 MM (X5)	1	16	R0564900	PIECES ACCESSOIRE CHARIOT	1
2	R0517000	HELICE V	1	17	R0565000	POIGNEE CHARIOT	1
3	R0517200	TRANSMISSION	4	18	R0565100	ROUES CHARIOT (*2)	1
4	R0517400	SUPPORT BROSE (*2)	1	19	R0565200	TUBE CHARIOT	1
5	R0517500	GUIDE FLUX	1	20	R0565600	CONNECTEUR 4 PTS	1
6	R0517600	GRILLE MOTEUR	1	21	R0567800	GOUPILLE 3*16 MM (*5)	1
7	R0517800	CARTOUCHE DE LIMON/SABLE FIN GP	1	22	R0567900	LIEN SERRAGE CABLE FLOTT (*5)	1
8	R0518500	PALIER ROUE GP	4	23	R0608500	VIS 4*16 MM A4 (*5)	1
9	R0518800	PIGNON 27 DENTS (*2)	1	24	R0609100	KIT CHARIOT V	1
10	R0528900	BROSSE GP (*2)	1	25	R0638900	VIS 4*25 MM (*5)	1
11	R0529300	BANDAGE GD NOIR GP	4	26	R0639000	PIGNON 17 DENTS (*2)	1
12	R0535800	CARTOUCHE LIMON/SABLE À GRAIN TRÈS	1	27	R0639100	PALIER EXTERIEUR (*2)	1
13	R0535900	CARTOUCHE TOUT USAGE GP	1	28	R0639200	VIS 2.9*9.5 MM (*5)	1

CODE **WR000427**DESCRIPTION: **W 655**

14	R0540300	PROTECTION ROUE	2	29	R0726600	CABLE FLOTTANT SWIVEL 18M	1
15	R0564800	EMBASE CHARIOT	1	30	R0863200	FLOTTEUR ARRIERE ASSEMBLE	1
31	R0863300	BLOC CAPTEUR ASSEMBLE	1	38	R0911100	ROUE	4
32	R0864900	ROULETTES (*2)	1	39	R0911200	COFFRET COMMANDE TYPE 5 P	1
33	R0865100	SUPPORT BAC FILTRANT	1	40	R0959500	PONTET BROSSE GRIS CLAIR	1
34	R0865400	BLOC MOTEUR TYPE 2	1	41	R0959600	POIGNEE BLUE FONCE	1
35	R0867000	LOQUET POLARIS	1	42	R0959700	COQUE COMPLETE GRIS CLAIR	1
36	R0867100	FENETRE CAPTEUR	1	43	R0959900	COUVERCLE COMPLET GRIS CLAIR	1
37	R0870100	FLOTTEUR	1				

CODE **WR000427**

DESCRIPTION: **W 655**



ENGLISH

POS	CODE	DESCRIPTION	QUANTITY	POS	CODE	DESCRIPTION	QUANTITY
1	R0516700	SCREWS 4*12 MM (X5)	1	16	R0564900	TROLLEY ACCESSORIES	1
2	R0517000	PROPELLER	1	17	R0565000	TROLLEY HANDLE	1
3	R0517200	TRANSMISSION	4	18	R0565100	TROLLEY WHEELS (*2)	1
4	R0517400	BRUSH ROLLER	1	19	R0565200	TROLLEY TUBE	1
5	R0517500	FLOW OUTLET	1	20	R0565600	FLOATING CABLE PLUG	1
6	R0517600	MOTOR SCREEN	1	21	R0567800	MOTOR BLOCK SHAFT PIN (SET OF 5)	1
7	R0517800	FILTER SAND/SILT CANISTER GP	1	22	R0567900	FLOATING CABLE CLAMP (SET OF 5)	1
8	R0518500	WHEEL BUSHING GP	4	23	R0608500	SCREW 4*16MM (set of 5)	1
9	R0518800	DRIVE GEAR (SET OF 2)	1	24	R0609100	TROLLEY KIT V	1
10	R0528900	BRUSH (SET OF 2) GP	1	25	R0638900	SCREW 4*25 MM (SET OF 5)	1
11	R0529300	LARGE TIRE BLACK GP	4	26	R0639000	17 GEAR (*2)	1
12	R0535800	ULTRA FINE SAND/SILT CANISTER GP	1	27	R0639100	OUTER BEARING (*2)	1
13	R0535900	GENERAL PURPOSE CANISTER GP	1	28	R0639200	SCREW 2.9*9.5 MM (SET OF 5)	1



PARTS BREAKDOWN

REV.: 0
DATE: 19/11/2021
SHEET: 6/12

7228

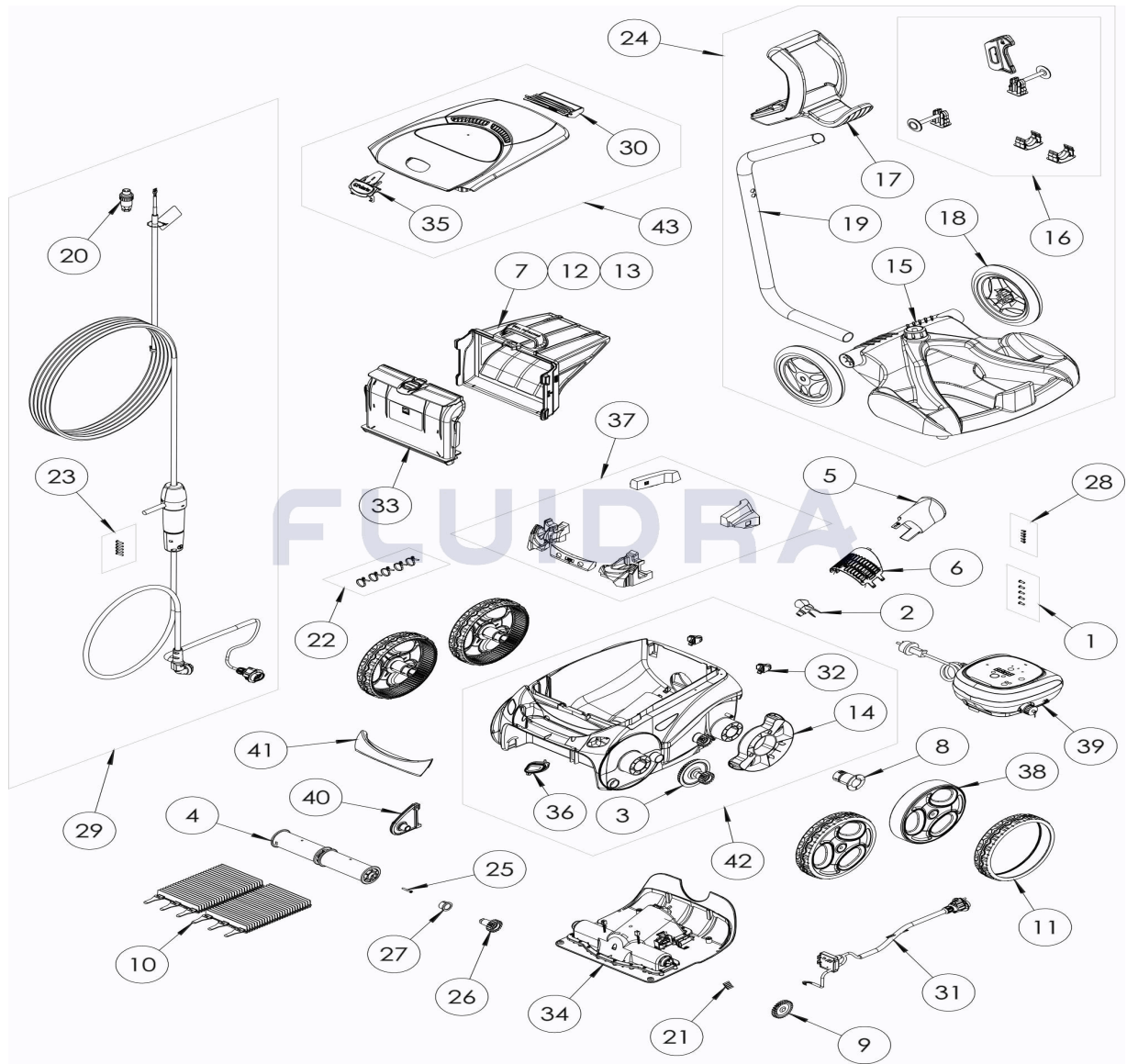
CODE **WR000427**

DESCRIPTION: **W 655**

14	R0540300	COVER WHEELS PROTECTION	2	29	R0726600	SWIVEL FLOATING CABLE KIT 18M	1
15	R0564800	TROLLEY BASE	1	30	R0863200	REAR FLOAT ASSEMBLY	1
31	R0863300	SENSOR BLOCK ASSEMBLY	1	38	R0911100	WHEEL	4
32	R0864900	ROLLER, 2PK	1	39	R0911200	CONTROL BOX TYPE 5 P	1
33	R0865100	FILTER CANISTER INLET HOUSING	1	40	R0959500	ROLLER SUPPORT, LIGHT GREY	1
34	R0865400	MOTOR BLOCK TYPE 2	1	41	R0959600	HANDLE, DARK BLUE	1
35	R0867000	POLARIS LATCH	1	42	R0959700	MAIN BODY HOUSING, LIGHT GREY	1
36	R0867100	SENSOR WINDOW	1	43	R0959900	COMPLETE COVER, LIGHT GREY	1
37	R0870100	FLOAT	1				

CODICE **WR000427**

DESCRIZIONE: **W 655**



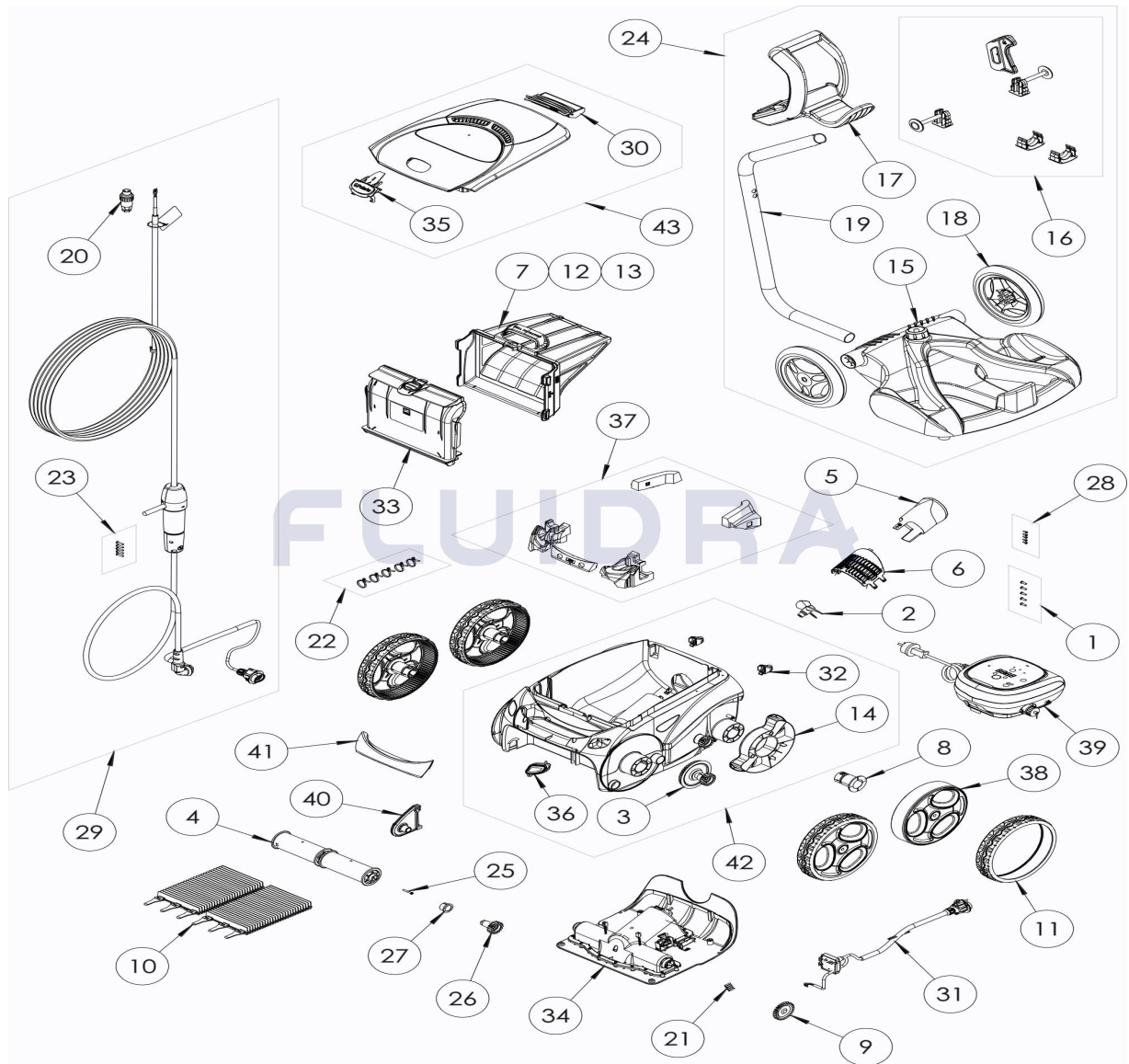
ITALIANO

POS	CODICE	DESCRIZIONE	QUANTITA'	POS	CODICE	DESCRIZIONE	QUANTITA'
1	R0516700	VITE 4*12 MM (*5)	1	16	R0564900	PEZZI ACCESSORI CARRELLO	1
2	R0517000	ELICA	1	17	R0565000	MANIGLIA CARRELLO	1
3	R0517200	TRASMISSIONE	4	18	R0565100	RUOTE CARRELLO (*2)	1
4	R0517400	SUPPORTO SPAZZOLA (*2)	1	19	R0565200	TUBO CARRELLO	1
5	R0517500	GUIDA FLUSSO	1	20	R0565600	CONNETTORE CAVO	1
6	R0517600	GRIGLIA	1	21	R0567800	COPIGLIA 3*16 MM (*5)	1
7	R0517800	SERBATOIO GP SABBIA FINE	1	22	R0567900	SET 5 PINZE PER FLOTTANTI	1
8	R0518500	BOCCOLA CUSCINETTO RUOTA GP	4	23	R0608500	VITE 4*16 MM A4 (*5)	1
9	R0518800	KIT 2 PIGNONE 27 DENTI	1	24	R0609100	CARRELLO V	1
10	R0528900	PENNELLI GP (CONFEZIONE DA 2 UN)	1	25	R0638900	VITE 4*25 MM (*5)	1
11	R0529300	PNEUMATICO GP NERO GRANDE	4	26	R0639000	KIT 2 PIGNONE 17 DENTI	1
12	R0535800	SERBATOIO GP SABBIA FINE	1	27	R0639100	CUSCINETTO ESTERIORE (*2)	1
13	R0535900	SERBATOIO PER USO GENERALE GP	1	28	R0639200	KIT 5 VITI 2.9*9.5 MM	1

CODICE **WR000427**DESCRIZIONE: **W 655**

14	R0540300	PROTEZIONE RUOTA	2	29	R0726600	CAVO GALLEGGIANTE SWIVEL 18M	1
15	R0564800	BASE CARRELLO	1	30	R0863200	GRUPPO GALLEGGIANTE POSTERIORE	1
31	R0863300	BLOCCO DI SENSORI ASSEMBLE	1	38	R0911100	RUOTE	4
32	R0864900	PONTICELLO SPAZZOLA (*2)	1	39	R0911200	QUADRO COMANDI TIPO 5 P	1
33	R0865100	SUPPORTO FILTRO V	1	40	R0959500	PONTICELLO SPAZZOLA, GRIGIO CHIARO	1
34	R0865400	BLOCCO MOTORE TIPO 2	1	41	R0959600	MANIGLIA, BLU SCURO	1
35	R0867000	BLOCCO IMPUGNATURA COPERCHIO POL	1	42	R0959700	GUSCIO COMPLETO, GRIGIO CHIARO	1
36	R0867100	FINESTRA SENSORI	1	43	R0959900	COVER COMPLETO, GRIGIO CHIARO	1
37	R0870100	FLOTTANTE	1				

CODE **WR000427**

 BESCHREIBUNG: **W 655**

DEUTSCH

POS	CODE	BESCHREIBUNG	MENGE	POS	CODE	BESCHREIBUNG	MENGE
1	R0516700	SCHRAUBE 4 * 12 MM(SET mit 5 Stk.)	1	16	R0564900	ZUBEHÖR CADDY	1
2	R0517000	TURBINE	1	17	R0565000	HANDGRIF CADDY	1
3	R0517200	GETRIEBE	4	18	R0565100	RÄDER CADDY (SET mit 2 Stk.)	1
4	R0517400	BÜRSTENWALZE (SET mit 2 Stk.)	1	19	R0565200	STANDROHR FÜR CADDY	1
5	R0517500	STRÖMUNGSDÜSE	1	20	R0565600	SCHWIMMKABEL STECKER (4 PTS)	1
6	R0517600	SCHUTZGITTER	1	21	R0567800	SPLINT FÜR KREUZAPPENANTRIEB (SET	1
7	R0517800	FEINSAND GP TANK	1	22	R0567900	KLEMME FÜR SCHWIMMKABEL (SET mit 5 Stk.)	1
8	R0518500	RADLAGERBUCHSE GP	4	23	R0608500	SCHRAUBE 4 * 16 MM, A4 (SET mit 5 Stk.)	1
9	R0518800	ZAHNRAD 27 ZÄHNE (SET mit 2 Stk.)	1	24	R0609100	CADDY V	1
10	R0528900	GP BÜRSTEN (2ER PACK)	1	25	R0638900	SCHRAUBE 4 * 25 MM, A2 (SET mit 5 Stk.)	1
11	R0529300	GROSSER SCHWARZER GP-REIFEN	4	26	R0639000	ZAHNRAD 17 ZÄHNE (SET mit 2 Stk.)	1
12	R0535800	FEINSAND GP TANK	1	27	R0639100	ZAHNRADBUCHSE (SET mit 2 Stk.)	1
13	R0535900	TANK FÜR DEN ALLGEMEINEN GEBRAUCH	1	28	R0639200	ZYLINDERKOPFSCHRAUBE 2,9 * 9,5 MM (SI	1

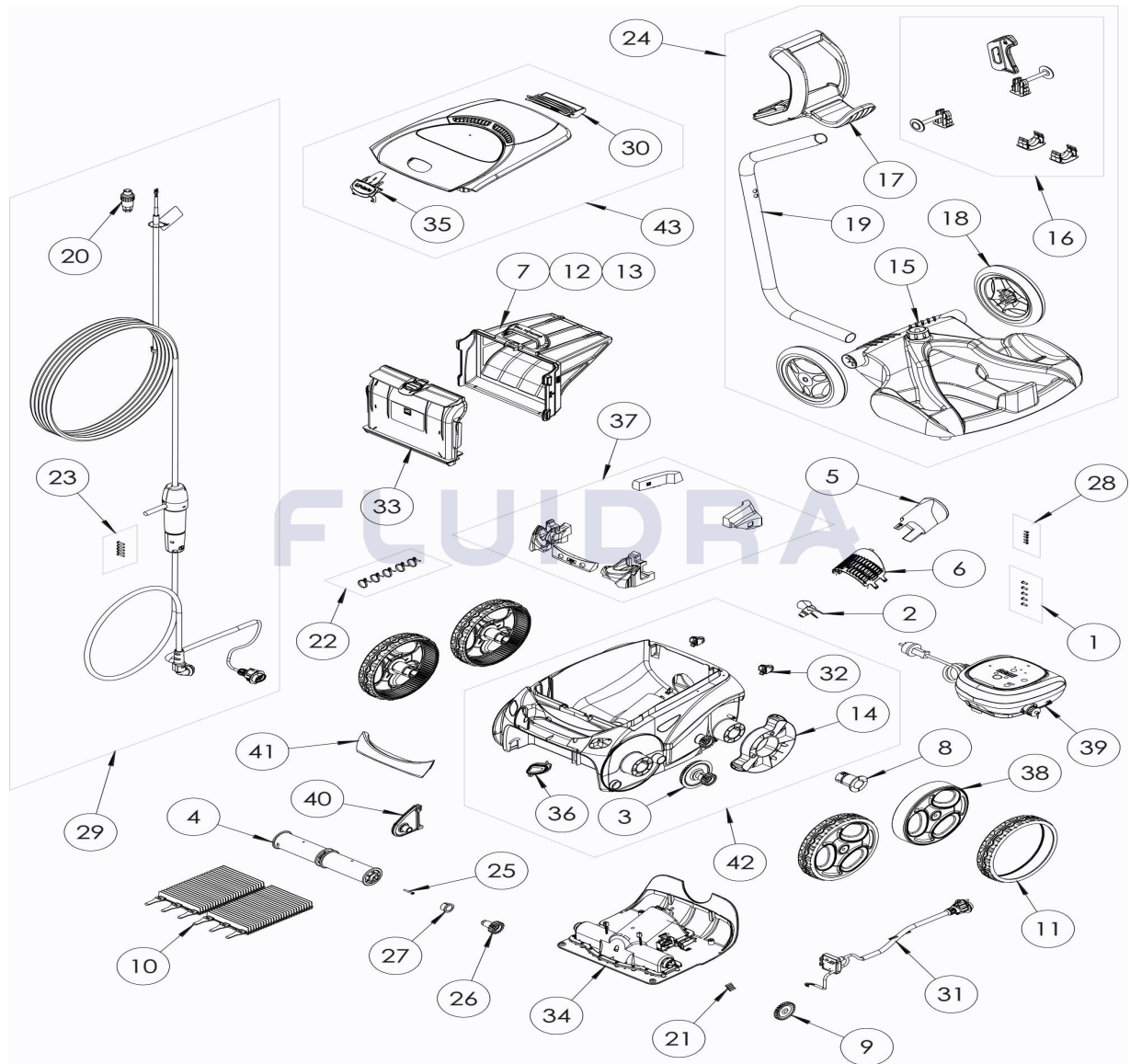
CODE **WR000427**

BESCHREIBUNG: **W 655**

14	R0540300	RADSCHUTZBLENDE	2	29	R0726600	SCHWIMMKABEL KOMPLETT SWIVEL 18M	1
15	R0564800	BODENPLATTE CADDY	1	30	R0863200	HECKFLOAT MONTAGE	1
31	R0863300	BLOCK VON SENSOREN MONTIEREN	1	38	R0911100	VORDERRÄDER	4
32	R0864900	BÜRSTENANKER (2 im SET)	1	39	R0911200	STEUERBOX TYP 5 P	1
33	R0865100	DECKEL FILTERKORB	1	40	R0959500	BÜRSTENANKER, HELLGRAU	1
34	R0865400	MOTORBLOCK TYP 2	1	41	R0959600	GRIFFSTÜCK, DUNKELBLAU	1
35	R0867000	GEHÄUSERIGEL POLARIS	1	42	R0959700	GEHÄUSE, HELLGRAU	1
36	R0867100	FENSTER SENSOREN	1	43	R0959900	GEHÄUSEDECKEL KOMPLETT, HELLGRAU	1
37	R0870100	SCHWIMMKÖRPER	1				

CODIGO

WR000427

 DESCRIÇÃO: **W 655**

PORTUGUES

POS	CODIGO	DESCRIÇÃO	JANTIDADE	POS	CODIGO	DESCRIÇÃO	JANTIDADE
1	R0516700	PARAFUSO 4*12 MM (Pack 5 UN)	1	16	R0564900	KIT ACCESÓRIOS CARRO	1
2	R0517000	HÉLICE	1	17	R0565000	PEGA CARRO DE TRANSPORTE	1
3	R0517200	CJTO. TRANSMISSÃO	4	18	R0565100	RODAS CARRO DE TRANSPORTE	1
4	R0517400	ROLO PORTA-ESCOVAS (Pack 2 UN)	1	19	R0565200	TUBO CARRO DE TRANSPORTE	1
5	R0517500	CANALIZADOR DE FLUXO	1	20	R0565600	LIGAÇÃO DE CABO 4 PINS	1
6	R0517600	TELA PROTECÇÃO	1	21	R0567800	CLIP FIXADOR 3*16 MM (Pack 5 UN)	1
7	R0517800	FINE SAND GP TANK	1	22	R0567900	ABRACADEIRA CABO FLUTUANTE	1
8	R0518500	BUCHA DE ROLAMENTO DE RODAS GP	4	23	R0608500	PARAFUSO 4*16 MM A4 (Pack 5 UN)	1
9	R0518800	RODA DENTADA 27 DENTES (Pack 2 UN)	1	24	R0609100	CARRO V	1
10	R0528900	ESCOVAS GP (EMBALAGEM DE 2 UN)	1	25	R0638900	PARAFUSO 4*25 MM (Pack 5 UN)	1
11	R0529300	BIG BLACK GP PNEU	4	26	R0639000	RODA DENTADA 17 DENTES (Pack 2 UN)	1
12	R0535800	FINE SAND GP TANK	1	27	R0639100	TAMPA EXTERIOR (Pack 2 UN)	1
13	R0535900	TANQUE PARA USO GERAL GP	1	28	R0639200	PARAFUSO 2.9*9.5 MM (Pack 5 UN)	1

CODIGO **WR000427**DESCRIÇÃO: **W 655**

14	R0540300	PROTETOR DA RODA	2	29	R0726600	CABO FLUTUANTE SWIVEL 18M	1
15	R0564800	BASE CARRO DE TRANSPORTE	1	30	R0863200	MONTAGEM DO FLUTUANTE TRASEIRO	1
31	R0863300	BLOCO DE SENSORES MONTADOS	1	38	R0911100	RODAS	4
32	R0864900	CLIP FIXAÇÃO ROLOS (*2)	1	39	R0911200	UNIDADE DE CONTROLO TIPO 5 P	1
33	R0865100	SUPORTE FILTRO	1	40	R0959500	CLIP FIXAÇÃO ROLOS, CINZA CLARO	1
34	R0865400	BLOCO MOTOR TIPO 2	1	41	R0959600	PEGA, AZUL-ESCURO	1
35	R0867000	FECHO DA TAMPOLARIS	1	42	R0959700	ESTRUTURA, CINZA CLARO	1
36	R0867100	JANELA DE SENSORES	1	43	R0959900	TAMPOLARIS COMPLETA, CINZA CLARO	1
37	R0870100	FLUTUADOR	1				