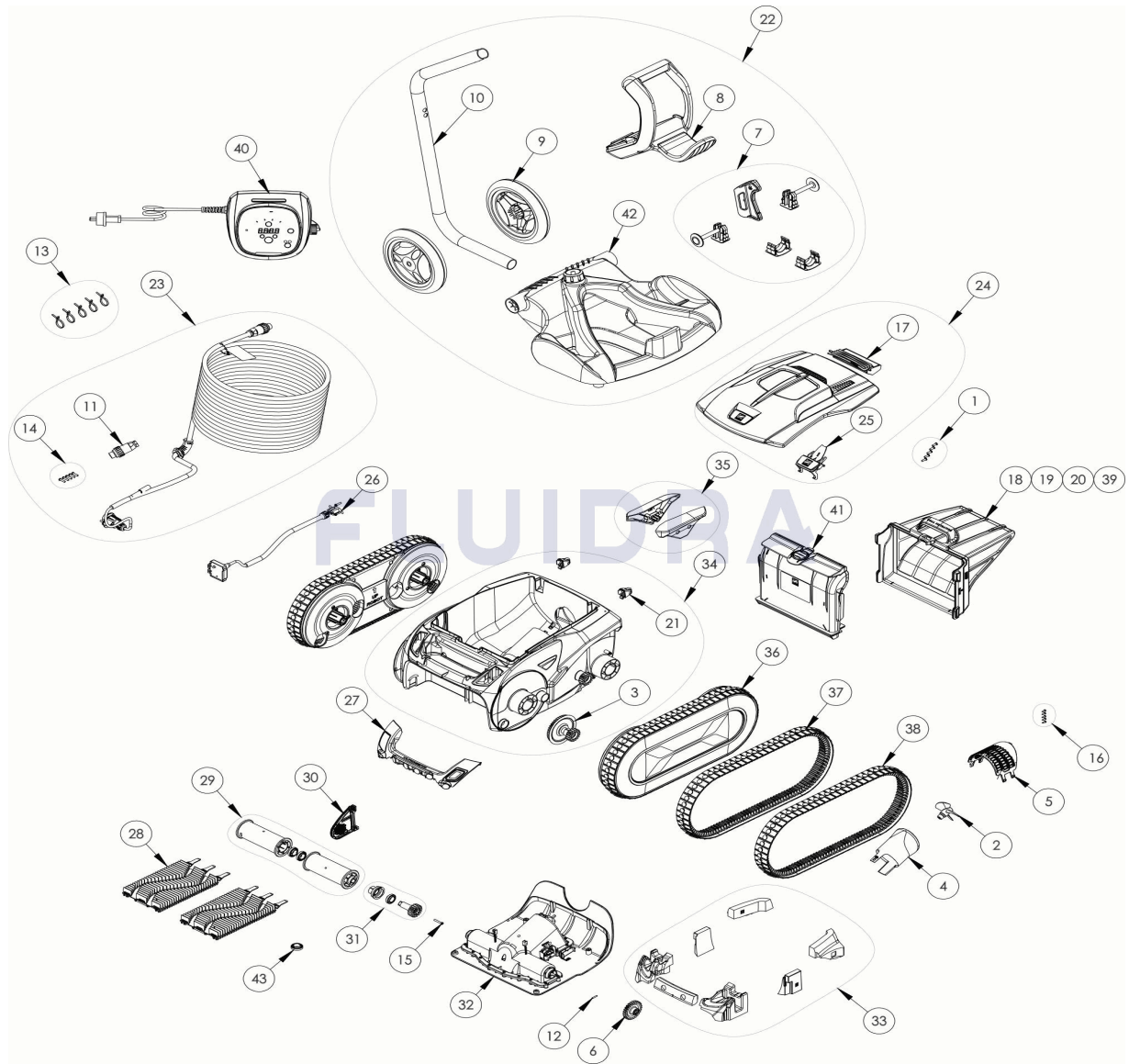


CODIGO **WR000414**

 DESCRIPCION: **TRX 7700 IQ**

**ESPAÑOL**

| POS | CODIGO   | DESCRIPCION                         | CANTIDAD | POS | CODIGO   | DESCRIPCION                     | CANTIDAD |
|-----|----------|-------------------------------------|----------|-----|----------|---------------------------------|----------|
| 1   | R0516700 | TORNILLO 4*12 MM (PACK DE 5 UN.)    | 1        | 16  | R0639200 | TORNILLO 2.9*9.5 MM (Pack 5 UN) | 1        |
| 2   | R0517000 | HÉLICE                              | 1        | 17  | R0863200 | CONJUNTO DE FLOTADOR TRASERO    | 1        |
| 3   | R0517200 | CJTO.TRANSMISIÓN                    | 4        | 18  | R0863500 | FILTRO RESIDUOS FINOS 60µ       | 1        |
| 4   | R0517500 | CANALIZADOR DE FLUJO                | 1        | 19  | R0863600 | FILTRO RESIDUOS FINOS 100µ      | 1        |
| 5   | R0517600 | MALLA PROTECCIÓN                    | 1        | 20  | R0863700 | FILTRO RESIDUOS FINOS 200µ      | 1        |
| 6   | R0518800 | PIÑÓN 27 DIENTES (Pack 2 UN)        | 1        | 21  | R0864900 | CLIP FIJACIÓN (PACK 2 UN)       | 1        |
| 7   | R0564900 | KIT ACCESORIOS CARRO                | 1        | 22  | R0962200 | CARRO VORTRAX                   | 1        |
| 8   | R0565000 | EMPUÑADURA CARRO DE TRANSPORTE      | 1        | 23  | R0962300 | CABLE FLOTANTE 30M              | 1        |
| 9   | R0565100 | RUEDAS CARRO DE TRANSPORTE (Pack 2  | 1        | 24  | R0962400 | TAPA COMPLETA VORTRAX ZODIAC    | 1        |
| 10  | R0565200 | TUBO CARRO DE TRANSPORTE            | 1        | 25  | R0962500 | CIERRE TAPA NEGRA VORTRAX       | 1        |
| 11  | R0565600 | CONECTOR DE CABLE 4 PINS            | 1        | 26  | R0962600 | KIT SENSORES VORTRAX            | 1        |
| 12  | R0567800 | CLIP FIJADOR 3*16 MM (Pack 5 UN)    | 1        | 27  | R0962700 | EMPUÑADURA SENSORES ULTRASONICO | 1        |
| 13  | R0567900 | ABRAZADERAS CABLE FLOTANTE ( Pack 5 | 1        | 28  | R0962800 | CEPILLOS ZZ GRIS VORTRAX        | 1        |

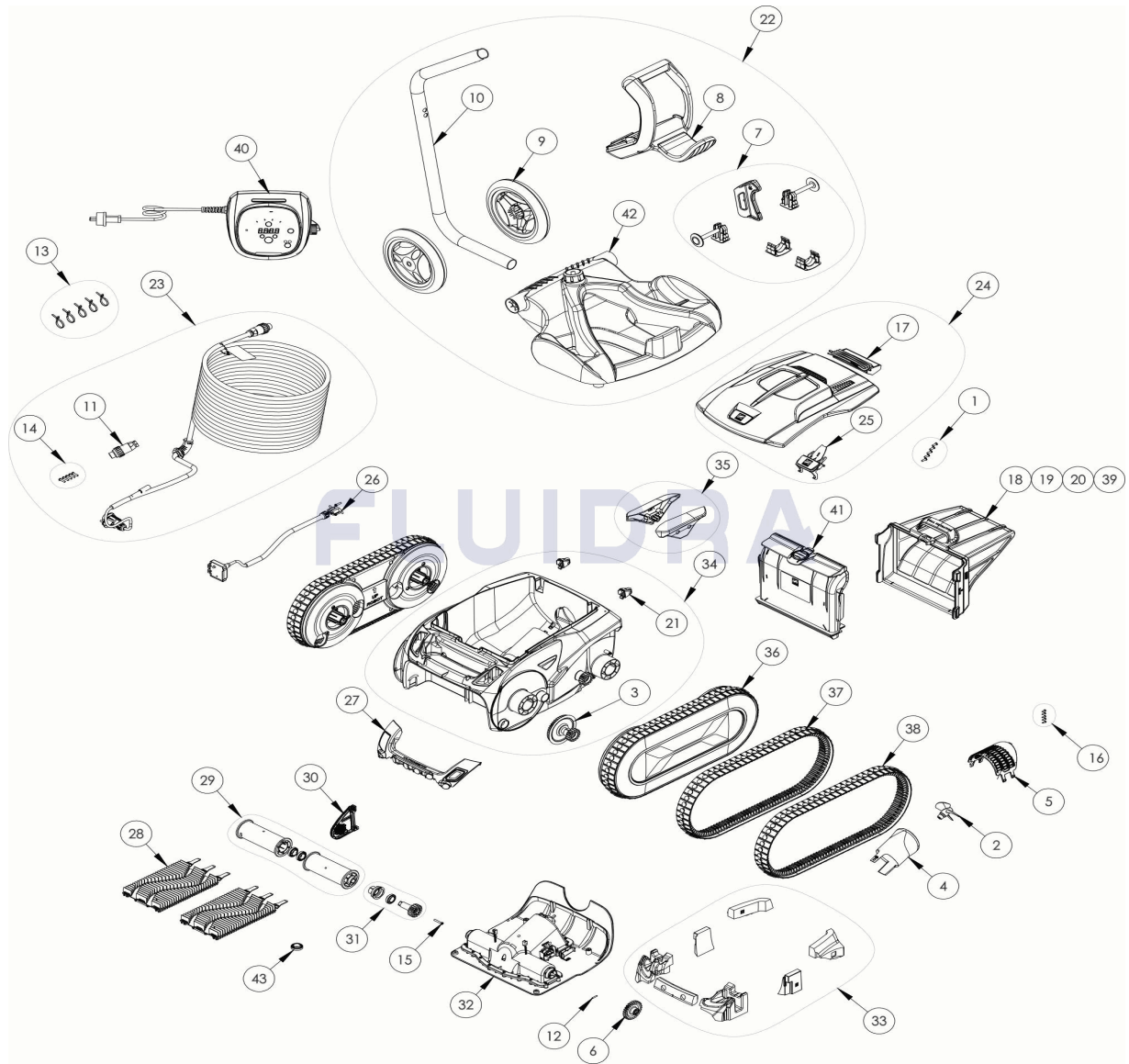
CODIGO **WR000414**

 DESCRIPCION: **TRX 7700 IQ**

|    |          |                                    |   |    |          |                                     |   |
|----|----------|------------------------------------|---|----|----------|-------------------------------------|---|
| 14 | R0608500 | TORNILLO 4*16 MM (PACK DE 5 UN     | 1 | 29 | R0962900 | SOPORTE CEPILLOS CON RODAMIENTO D   | 1 |
| 15 | R0638900 | TORNILLO 4*25 MM (Pack 5 UN)       | 1 | 30 | R0963000 | RODAMIENTO DE BOLAS DE LA PLACA INT | 1 |
| 31 | R0963100 | RODAMIENTO DE BOLAS CON PIÑOS 17 D | 4 | 38 | R0963800 | ORUGA PARA PISCINAS ADHERENTES VOF  | 1 |
| 32 | R0963200 | BLOQUE MOTOR VORTRAX TIPO 4        | 1 | 39 | R0963900 | FILTRO 150µM INOXIDABLE VORTRAX     | 1 |
| 33 | R0963300 | FLOTADORES MODELO ULTRASONIDOS V   | 1 | 40 | R0964000 | UNIDAD DE CONTROL TIPO 7 EU         | 1 |
| 34 | R0963400 | CARCASA PRINCIPAL ULTRASONIDOS     | 1 | 41 | R0964100 | CANALIZADOR DE ASPIRACION VORTRAX   | 1 |
| 35 | R0963500 | AÑADIDOS LATERALES CUERPO VORTRA   | 1 | 42 | R0968400 | BASE CARRO DE TRANSPORTE VORTRAX    | 1 |
| 36 | R0963600 | TRANSMISION CADENAS COMPLETA VOR   | 2 | 43 | W79034   | COJINETE, (RUEDA Y MOTOR)           | 1 |
| 37 | R0963700 | ORUGA PARA PISCINAS DESLIZANTES VO | 1 |    |          |                                     |   |

CODE **WR000414**

DESCRIPTION: **TRX 7700 IQ**



**FRANCAIS**

| POS | CODE     | DESCRIPTION                   | QUANTITE | POS | CODE     | DESCRIPTION                       | QUANTITE |
|-----|----------|-------------------------------|----------|-----|----------|-----------------------------------|----------|
| 1   | R0516700 | VIS 4*12 MM (X5)              | 1        | 16  | R0639200 | VIS 2.9*9.5 MM (*5)               | 1        |
| 2   | R0517000 | HELICE V                      | 1        | 17  | R0863200 | FLOTTEUR ARRIERE ASSEMBLE         | 1        |
| 3   | R0517200 | TRANSMISSION                  | 4        | 18  | R0863500 | FILTRE DEBRIS TRES FINS 60µ       | 1        |
| 4   | R0517500 | GUIDE FLUX                    | 1        | 19  | R0863600 | FILTRE DEBRIS FINS 100µ           | 1        |
| 5   | R0517600 | GRILLE MOTEUR                 | 1        | 20  | R0863700 | FILTRE DEBRIS LARGES 200µ         | 1        |
| 6   | R0518800 | PIGNON 27 DENTS (*2)          | 1        | 21  | R0864900 | ROULETTES (*2)                    | 1        |
| 7   | R0564900 | PIECES ACCESSOIRE CHARIOT     | 1        | 22  | R0962200 | KIT CHARIOT VORTRAX               | 1        |
| 8   | R0565000 | POIGNEE CHARIOT               | 1        | 23  | R0962300 | CABLE FLOTTANT 30M                | 1        |
| 9   | R0565100 | ROUES CHARIOT (*2)            | 1        | 24  | R0962400 | COUVERCLE VORTRAX ZODIAC          | 1        |
| 10  | R0565200 | TUBE CHARIOT                  | 1        | 25  | R0962500 | LOQUET COUVERCLE NOIR VORTRAX     | 1        |
| 11  | R0565600 | CONNECTEUR 4 PTS              | 1        | 26  | R0962600 | KIT CAPTEURS VORTRAX              | 1        |
| 12  | R0567800 | GOUPILLE 3*16 MM (*5)         | 1        | 27  | R0962700 | CAPTEUR DE POIGNEE À ULTRASON VOF | 1        |
| 13  | R0567900 | LIEN SERRAGE CABLE FLOTT (*5) | 1        | 28  | R0962800 | BROSSE ZZ GRIS VORTRAX            | 1        |

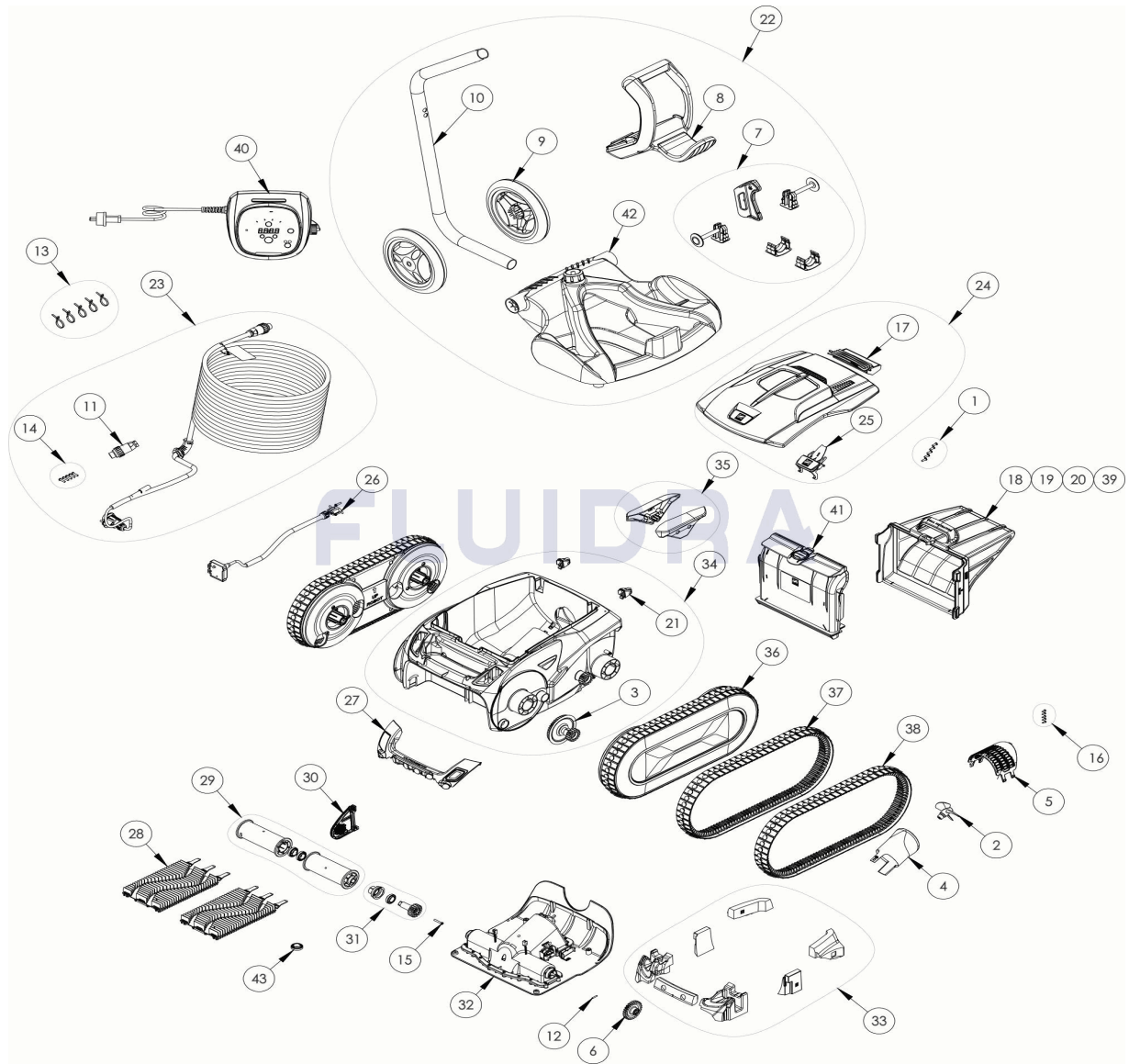
CODE **WR000414**

 DESCRIPTION: **TRX 7700 IQ**

|    |          |                                      |   |    |          |                                       |   |
|----|----------|--------------------------------------|---|----|----------|---------------------------------------|---|
| 14 | R0608500 | VIS 4*16 MM A4 (*5)                  | 1 | 29 | R0962900 | SUPPORT BROSSE ROULEMENT A BILLE (*   | 1 |
| 15 | R0638900 | VIS 4*25 MM (*5)                     | 1 | 30 | R0963000 | ROULEMENT À BILLES DE PLATEAU INTER   | 1 |
| 31 | R0963100 | ROULEMENT A BILLE PIGNON 17 DENTS (* | 4 | 38 | R0963800 | CHENILLE REVETEMENT ADHERENT VORT     | 1 |
| 32 | R0963200 | BLOC MOTEUR VORTRAX TYPE 4           | 1 | 39 | R0963900 | FILTRE EN ACIER INOXYDABLE DE 150µM \ | 1 |
| 33 | R0963300 | MODÈLES DE FLOTTEURS À ULTRASONS     | 1 | 40 | R0964000 | COFFRET DE COMMANDE TYPE 7 EU         | 1 |
| 34 | R0963400 | BOÎTIER PRINCIPAL ULTRASONS          | 1 | 41 | R0964100 | CONDUIT ASPIRATION VORTRAX            | 1 |
| 35 | R0963500 | COMPLÈMENT LATÉRAL DE CARCASSE V     | 1 | 42 | R0968400 | EMBASE CHARIOT VORTRAX                | 1 |
| 36 | R0963600 | BOÎTE DE TRANSMISSION À CHENILLES C  | 2 | 43 | W79034   | ROULEMENT (ROUE ET MOTEUR)            | 1 |
| 37 | R0963700 | CHENILLE REVETEMENT GLISSANT VORT    | 1 |    |          |                                       |   |

CODE **WR000414**

DESCRIPTION: **TRX 7700 IQ**



**ENGLISH**

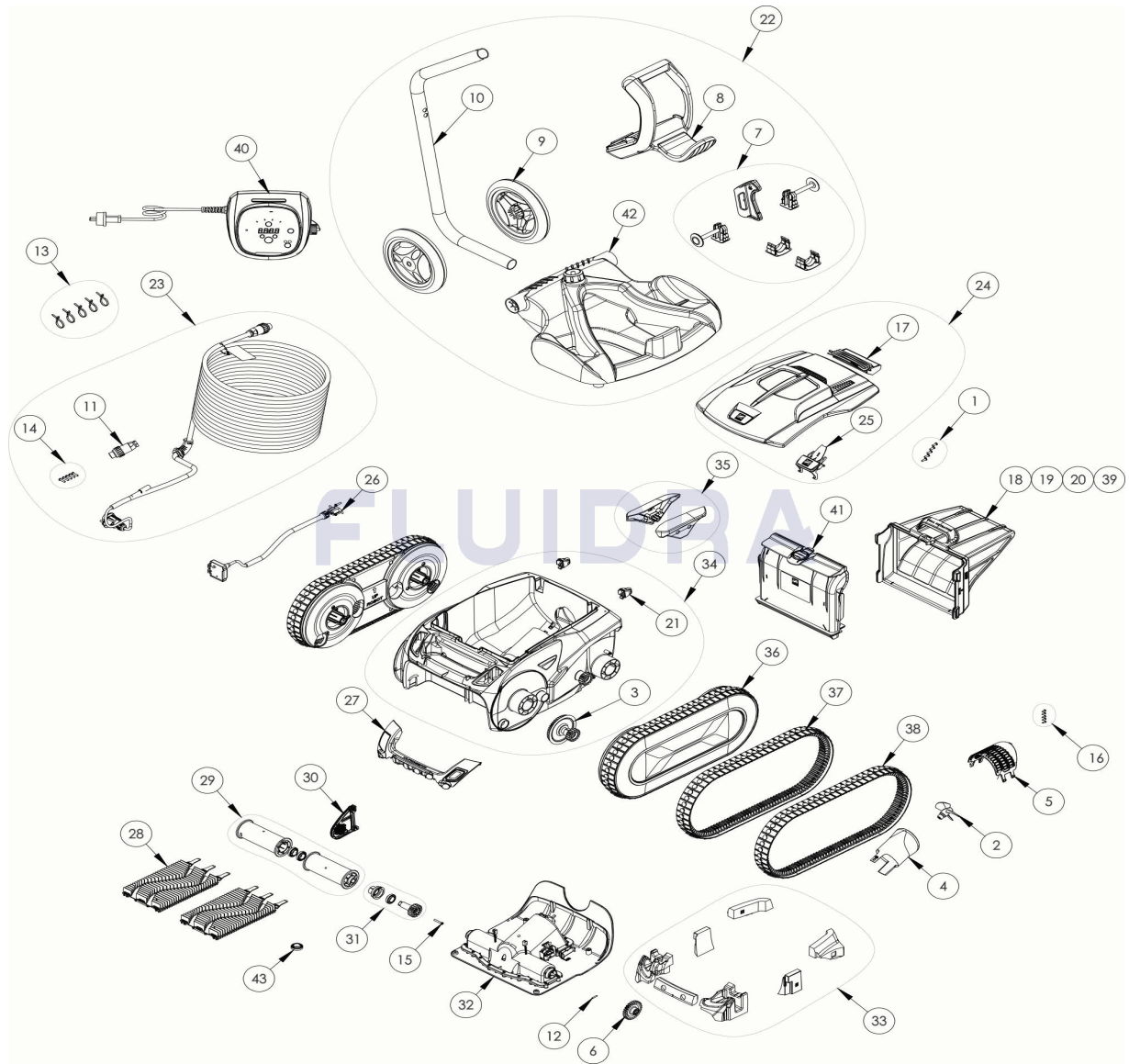
| POS | CODE     | DESCRIPTION                      | QUANTITY | POS | CODE     | DESCRIPTION                      | QUANTITY |
|-----|----------|----------------------------------|----------|-----|----------|----------------------------------|----------|
| 1   | R0516700 | SCREWS 4*12 MM (X5)              | 1        | 16  | R0639200 | SCREW 2.9*9.5 MM (SET OF 5)      | 1        |
| 2   | R0517000 | PROPELLER                        | 1        | 17  | R0863200 | REAR FLOAT ASSEMBLY              | 1        |
| 3   | R0517200 | TRANSMISSION                     | 4        | 18  | R0863500 | ULTRA FINE FILTER 60µ            | 1        |
| 4   | R0517500 | FLOW OUTLET                      | 1        | 19  | R0863600 | FINE FILTER 100µ                 | 1        |
| 5   | R0517600 | MOTOR SCREEN                     | 1        | 20  | R0863700 | LARGE FILTER 200µ                | 1        |
| 6   | R0518800 | DRIVE GEAR (SET OF 2)            | 1        | 21  | R0864900 | ROLLER, 2PK                      | 1        |
| 7   | R0564900 | TROLLEY ACCESSORIES              | 1        | 22  | R0962200 | TROLLEY KIT VORTRAX              | 1        |
| 8   | R0565000 | TROLLEY HANDLE                   | 1        | 23  | R0962300 | FLOATING CABLE 30M               | 1        |
| 9   | R0565100 | TROLLEY WHEELS (*2)              | 1        | 24  | R0962400 | COMPLETE COVER VORTRAX ZODIAC    | 1        |
| 10  | R0565200 | TROLLEY TUBE                     | 1        | 25  | R0962500 | COVER LATCH BLACK VORTRAX        | 1        |
| 11  | R0565600 | FLOATING CABLE PLUG              | 1        | 26  | R0962600 | SENSORS KIT VORTRAX              | 1        |
| 12  | R0567800 | MOTOR BLOCK SHAFT PIN (SET OF 5) | 1        | 27  | R0962700 | ULTRASONIC HANDLE SENSOR VORTRAX | 1        |
| 13  | R0567900 | FLOATING CABLE CLAMP (SET OF 5)  | 1        | 28  | R0962800 | ZZ BRUSH GREY VORTRAX            | 1        |

CODE                    **WR000414**

DESCRIPTION: **TRX 7700 IQ**

|    |          |                                   |   |    |          |                                      |   |
|----|----------|-----------------------------------|---|----|----------|--------------------------------------|---|
| 14 | R0608500 | SCREW 4*16MM (set of 5)           | 1 | 29 | R0962900 | BRUSH SUPPORT WITH BALL BEARING (*2) | 1 |
| 15 | R0638900 | SCREW 4*25 MM (SET OF 5)          | 1 | 30 | R0963000 | INTERMEDIATE PLATE BALL BEARING GRE  | 1 |
| 31 | R0963100 | 17 GEAR BALL BEARING (*2)         | 4 | 38 | R0963800 | TRACK ADHERENT POOLS VORTRAX (*2)    | 1 |
| 32 | R0963200 | MOTOR BLOCK VORTRAX TYPE 4        | 1 | 39 | R0963900 | 150µM STAINLESS STEEL FILTER VORTRAX | 1 |
| 33 | R0963300 | FLOATS ULTRASONIC MODELS VORTRAX  | 1 | 40 | R0964000 | CONTROL BOX TYPE 7 EU                | 1 |
| 34 | R0963400 | MAIN HOUSING ULTRASONIC           | 1 | 41 | R0964100 | INLET CHANNEL VORTRAX                | 1 |
| 35 | R0963500 | BODY SIDE ADD-ON VORTRAX          | 1 | 42 | R0968400 | TROLLEY BASE VORTRAX                 | 1 |
| 36 | R0963600 | COMPLETE TRACK GEARBOX VORTRAX (' | 2 | 43 | W79034   | BEARING (WHEEL & ENGINE)             | 1 |
| 37 | R0963700 | TRACK SLIPPERY POOLS VORTRAX (*2) | 1 |    |          |                                      |   |

CODICE **WR000414**

 DESCRIZIONE: **TRX 7700 IQ**

**ITALIANO**

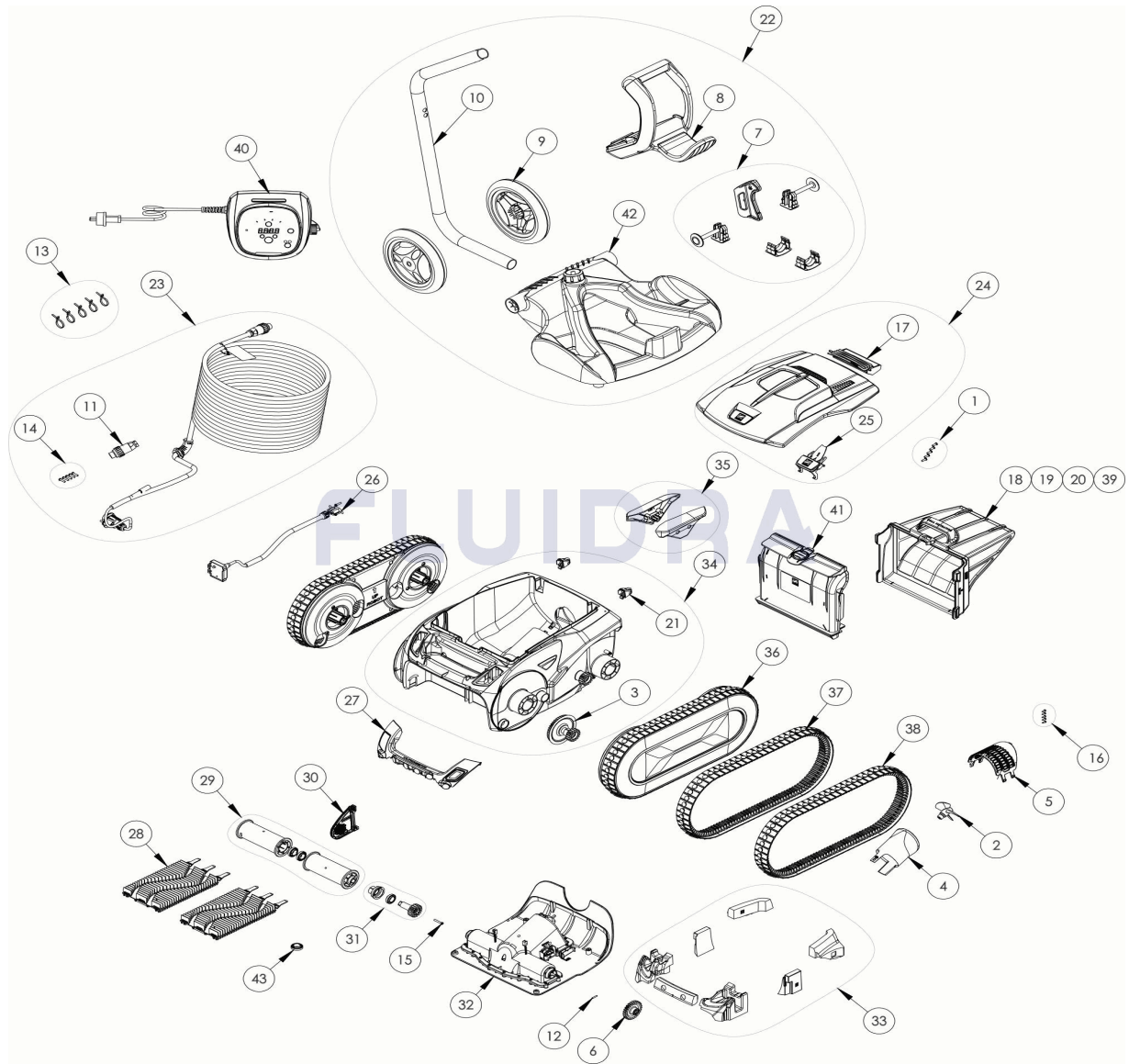
| POS | CODICE   | DESCRIZIONE               | QUANTITA' | POS | CODICE   | DESCRIZIONE                         | QUANTITA' |
|-----|----------|---------------------------|-----------|-----|----------|-------------------------------------|-----------|
| 1   | R0516700 | VITE 4*12 MM (*5)         | 1         | 16  | R0639200 | KIT 5 VITI 2.9*9.5 MM               | 1         |
| 2   | R0517000 | ELICA                     | 1         | 17  | R0863200 | GRUPPO GALLEGGIANTE POSTERIORE      | 1         |
| 3   | R0517200 | TRASMISSIONE              | 4         | 18  | R0863500 | FILTRO DETRITI SOTTILI 60µ          | 1         |
| 4   | R0517500 | GUIDA FLUSSO              | 1         | 19  | R0863600 | FILTRO DETRITI SOTTILI 100µ         | 1         |
| 5   | R0517600 | GRIGLIA                   | 1         | 20  | R0863700 | FILTRO DETRITI SOTTILI 200µ         | 1         |
| 6   | R0518800 | KIT 2 PIGNONE 27 DENTI    | 1         | 21  | R0864900 | PONTICELLO SPAZZOLA (*2)            | 1         |
| 7   | R0564900 | PEZZI ACCESSORI CARRELLO  | 1         | 22  | R0962200 | CARRELLO VORTRAX                    | 1         |
| 8   | R0565000 | MANIGLIA CARRELLO         | 1         | 23  | R0962300 | CAVO GALLEGGIANTE 30M               | 1         |
| 9   | R0565100 | RUOTE CARRELLO (*2)       | 1         | 24  | R0962400 | COPERCHIO COMPLETO VORTRAX ZODIAC   | 1         |
| 10  | R0565200 | TUBO CARRELLO             | 1         | 25  | R0962500 | BLOCCO IMPUGNATURA COPERCHIO NER    | 1         |
| 11  | R0565600 | CONNETTORE CAVO           | 1         | 26  | R0962600 | KIT DI SENSORI VORTRAX              | 1         |
| 12  | R0567800 | COPIGLIA 3*16 MM (*5)     | 1         | 27  | R0962700 | SENSORE MANIGLIA A ULTRASUONI VORTI | 1         |
| 13  | R0567900 | SET 5 PINZE PER FLOTTANTI | 1         | 28  | R0962800 | ZZ SPAZZOLE GRIGIO VORTRAX          | 1         |

CODICE **WR000414**DESCRIZIONE: **TRX 7700 IQ**

|    |          |                                     |   |    |          |  |   |
|----|----------|-------------------------------------|---|----|----------|--|---|
| 14 | R0608500 | VITE 4*16 MM A4 (*5)                | 1 | 29 | R0962900 | SUPPORTO SPAZZOLA CON CUSCINETTO ,     | 1 |
| 15 | R0638900 | VITE 4*25 MM (*5)                   | 1 | 30 | R0963000 | CUSCINETTO A SFERE PIASTRA INTERMEC    | 1 |
| 31 | R0963100 | CUSCINETTO A SFERA PIGNONE 17 DENTI | 4 | 38 | R0963800 | CINGOLI PER PISCINE ADERENTE VORTRA    | 1 |
| 32 | R0963200 | BLOCCO MOTORE VORTRAX TIPO 4        | 1 | 39 | R0963900 | FILTRO IN ACCIAIO INOX DA 150 µM VORTF | 1 |
| 33 | R0963300 | MODELLI A ULTRASUONI FLOATS VORTRA  | 1 | 40 | R0964000 | QUADRO COMANDI TIPO 7                  | 1 |
| 34 | R0963400 | ALLOGGIAMENTO PRINCIPALE ULTRASUC   | 1 | 41 | R0964100 | CONDOTTO ASPIRAZIONE VORTRAX           | 1 |
| 35 | R0963500 | ACCESSORIO LATO CORPO VORTRAX       | 1 | 42 | R0968400 | BASE CARRELLO VORTRAX                  | 1 |
| 36 | R0963600 | CAMBIO BINARIO COMPLETO VORTRAX (*  | 2 | 43 | W79034   | CUSCINETTO A SFERA                     | 1 |
| 37 | R0963700 | CINGOLI PER PISCINE SCIVOLOSE VORTF | 1 |    |          |  |   |



CODE **WR000414**

 BESCHREIBUNG: **TRX 7700 IQ**

**DEUTSCH**

| POS | CODE     | BESCHREIBUNG                       | MENGE | POS | CODE     | BESCHREIBUNG                          | MENGE |
|-----|----------|------------------------------------|-------|-----|----------|---------------------------------------|-------|
| 1   | R0516700 | SCHRAUBE 4 * 12 MM(SET mit 5 Stk.) | 1     | 16  | R0639200 | ZYLINDERKOPFSCHRAUBE 2,9 * 9,5 MM (SI | 1     |
| 2   | R0517000 | TURBINE                            | 1     | 17  | R0863200 | HECKFLOAT MONTAGE                     | 1     |
| 3   | R0517200 | GETRIEBE                           | 4     | 18  | R0863500 | FILTER FEIN 60µ                       | 1     |
| 4   | R0517500 | STRÖMUNGSDÜSE                      | 1     | 19  | R0863600 | FILTER FEIN 100µ                      | 1     |
| 5   | R0517600 | SCHUTZGITTER                       | 1     | 20  | R0863700 | FILTER FEIN 200µ                      | 1     |
| 6   | R0518800 | ZAHNRAD 27 ZÄHNE (SET mit 2 Stk.)  | 1     | 21  | R0864900 | BÜRSTENANKER (2 im SET)               | 1     |
| 7   | R0564900 | ZUBEHÖR CADDY                      | 1     | 22  | R0962200 | CADDY VORTRAX                         | 1     |
| 8   | R0565000 | HANDGRIFF CADDY                    | 1     | 23  | R0962300 | SCHWIMMKABEL KOMPLETT 30M             | 1     |
| 9   | R0565100 | RÄDER CADDY (SET mit 2 Stk.)       | 1     | 24  | R0962400 | GEHÄUSEDECKEL KOMPLETT VORTRAX Z      | 1     |
| 10  | R0565200 | STANDROHR FÜR CADDY                | 1     | 25  | R0962500 | GEHÄUSERIGEL SCHWARZ ZODIAC           | 1     |
| 11  | R0565600 | SCHWIMMKABEL STECKER (4 PTS)       | 1     | 26  | R0962600 | VORTRAX-SENSOR-KIT                    | 1     |
| 12  | R0567800 | SPLINT FÜR KREUZZAPFENANTRIEB (SET | 1     | 27  | R0962700 | ULTRASCHALLSENSOR GRIFF VORTRAX       | 1     |
| 13  | R0567900 | KLEMME FÜR SCHWIMMKABEL (SET mit 5 | 1     | 28  | R0962800 | ZZ BÜRSTEN GRAU VORTRAX               | 1     |

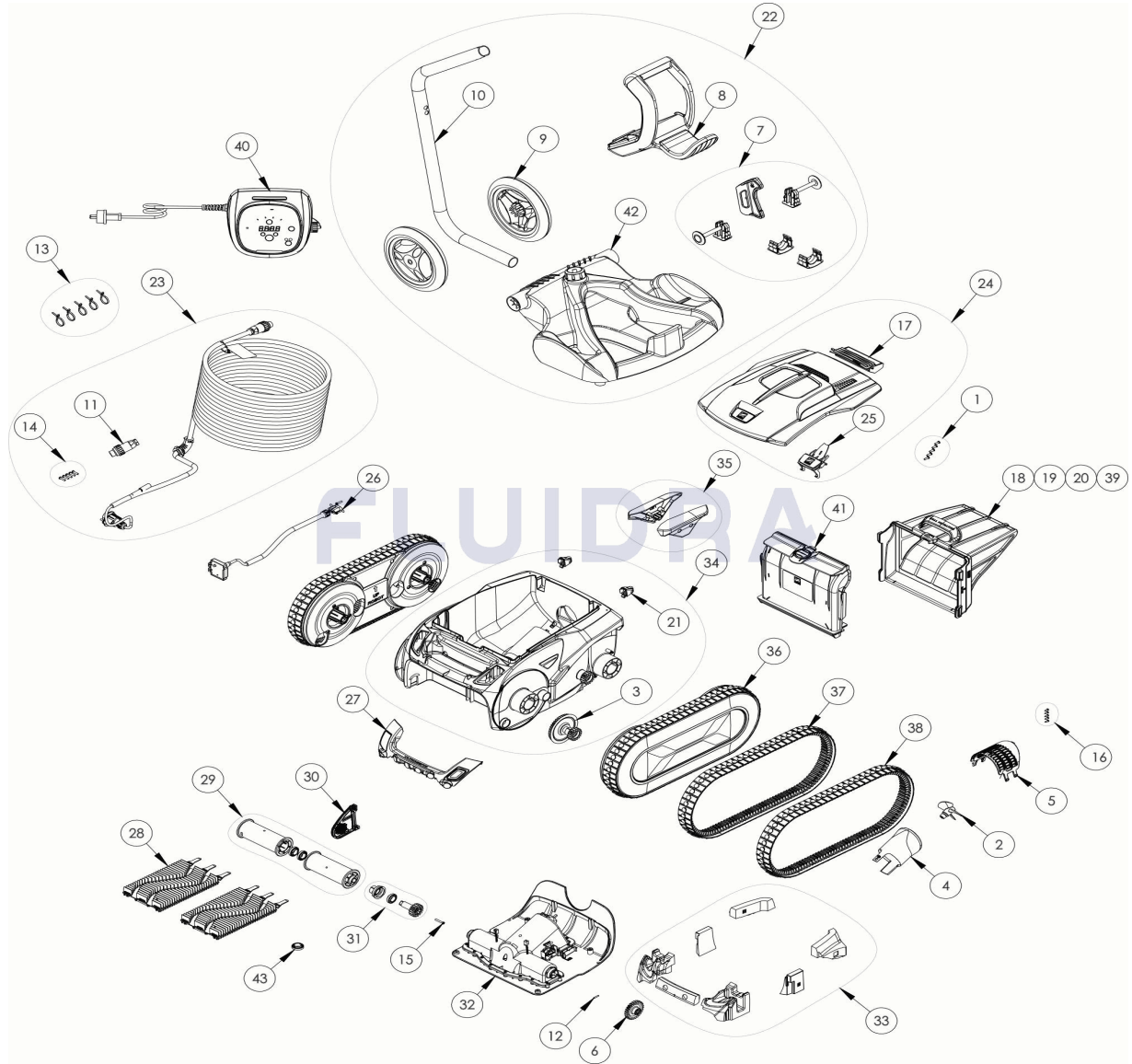
CODE **WR000414**

 BESCHREIBUNG: **TRX 7700 IQ**

|    |          |   |   |    |          |                                  |   |
|----|----------|---|---|----|----------|----------------------------------|---|
| 14 | R0608500 | SCHRAUBE 4 * 16 MM, A4 (SET mit 5 Stk.) | 1 | 29 | R0962900 | BÜRSTENHALTER KUGELLAGER (*2)    | 1 |
| 15 | R0638900 | SCHRAUBE 4 * 25 MM, A2 (SET mit 5 Stk.) | 1 | 30 | R0963000 | ZWISCHENPLATTE KUGELLAGER GRAU   | 1 |
| 31 | R0963100 | KUGELLAGER ZAHNRAD 17 ZÄHNE (SET M      | 4 | 38 | R0963800 | RAUPENBAND FÜR ANHAFTEND BODEN V | 1 |
| 32 | R0963200 | MOTORBLOCK VORTRAX TYP 4                | 1 | 39 | R0963900 | 150 µM-EDELSTAHLFILTER VORTRAX   | 1 |
| 33 | R0963300 | SCHWIMMER ULTRASCHALLMODELLE VO         | 1 | 40 | R0964000 | STEUERBOX TYP 7 EU               | 1 |
| 34 | R0963400 | HAUPTGEHÄUSE ULTRASCHALL                | 1 | 41 | R0964100 | SAUGKANAL VORTRAX                | 1 |
| 35 | R0963500 | ERWEITERUNG KASTENVERKLEIDUNG VC        | 1 | 42 | R0968400 | BODENPLATTE CADDY VORTRAX        | 1 |
| 36 | R0963600 | KOMPLETTES RAUPENBANDGETRIEBE VC        | 2 | 43 | W79034   | KUGELLAGER                       | 1 |
| 37 | R0963700 | RAUPENBAND FÜR GLATTEN BODEN VOR        | 1 |    |          |                                  |   |

CODIGO **WR000414**

DESCRIÇÃO: TRX 7700 IQ



### PORTUGUES

| POS | CODIGO   | DESCRIÇÃO                          | JANTIDADE | POS | CODIGO   | DESCRIÇÃO                         | JANTIDADE |
|-----|----------|------------------------------------|-----------|-----|----------|-----------------------------------|-----------|
| 1   | R0516700 | PARAFUSO 4*12 MM (Pack 5 UN)       | 1         | 16  | R0639200 | PARAFUSO 2.9*9.5 MM (Pack 5 UN)   | 1         |
| 2   | R0517000 | HÉLICE                             | 1         | 17  | R0863200 | MONTAGEM DO FLUTUANTE TRASEIRO    | 1         |
| 3   | R0517200 | CJTO. TRANSMISSÃO                  | 4         | 18  | R0863500 | FILTRO RESIDUOS FINOS 60µ         | 1         |
| 4   | R0517500 | CANALIZADOR DE FLUXO               | 1         | 19  | R0863600 | FILTRO RESIDUOS FINOS 100µ        | 1         |
| 5   | R0517600 | TELA PROTECÇÃO                     | 1         | 20  | R0863700 | FILTRO RESIDUOS FINOS 200µ        | 1         |
| 6   | R0518800 | RODA DENTADA 27 DENTES (Pack 2 UN) | 1         | 21  | R0864900 | CLIP FIXAÇÃO ROLOS (*2)           | 1         |
| 7   | R0564900 | KIT ACCESÓRIOS CARRO               | 1         | 22  | R0962200 | CARRO VORTRAX                     | 1         |
| 8   | R0565000 | PEGA CARRO DE TRANSPORTE           | 1         | 23  | R0962300 | CABO FLUTUANTE 30M                | 1         |
| 9   | R0565100 | RODAS CARRO DE TRANSPORTE          | 1         | 24  | R0962400 | TAMPA COMPLETA VORTRAX ZODIAC     | 1         |
| 10  | R0565200 | TUBO CARRO DE TRANSPORTE           | 1         | 25  | R0962500 | FECHO DA TAMPA PRETO VORTRAX      | 1         |
| 11  | R0565600 | LIGAÇÃO DE CABO 4 PINS             | 1         | 26  | R0962600 | KIT DE SENSORES VORTRAX           | 1         |
| 12  | R0567800 | CLIP FIXADOR 3*16 MM (Pack 5 UN)   | 1         | 27  | R0962700 | SENSOR ULTRASSÓNICO DE PUXADOR VC | 1         |
| 13  | R0567900 | ABRAÇADEIRA CABO FLUTUANTE         | 1         | 28  | R0962800 | ESCOVAS ZZ CINZA VORTRAX          | 1         |

CODIGO **WR000414**DESCRIÇÃO: **TRX 7700 IQ**

|    |          |                                    |   |    |          |                                       |   |
|----|----------|------------------------------------|---|----|----------|---------------------------------------|---|
| 14 | R0608500 | PARAFUSO 4*16 MM A4 (Pack 5 UN)    | 1 | 29 | R0962900 | SUORTE ESCOVAS CON ROLAMENTO DE       | 1 |
| 15 | R0638900 | PARAFUSO 4*25 MM (Pack 5 UN)       | 1 | 30 | R0963000 | ROLAMENTO DE ESFERAS CINZENTO DA F    | 1 |
| 31 | R0963100 | ROLAMENTO DE ESFERAS RODA DENTAD   | 4 | 38 | R0963800 | LAGARTAS PARA PISCINAS ADERENTES VC   | 1 |
| 32 | R0963200 | BLOCO MOTOR VORTRAX TIPO 4         | 1 | 39 | R0963900 | FILTRO DE AÇO INOXIDÁVEL 150 µM VORTI | 1 |
| 33 | R0963300 | MODELOS ULTRASSÔNICOS FLUTUANTE    | 1 | 40 | R0964000 | UNIDADE DE CONTROLO TIPO 7            | 1 |
| 34 | R0963400 | ESTRUTURA PRINCIPAL ULTRASSÔNICA   | 1 | 41 | R0964100 | BOCA DE ASPIRAÇÃO VORTRAX             | 1 |
| 35 | R0963500 | ACESSÓRIO PARA CAIXA VORTRAX       | 1 | 42 | R0968400 | BASE CARRO DE TRANSPORTE VORTRAX      | 1 |
| 36 | R0963600 | CAIXA COMPLETA DE ENGRENAGENS COI  | 2 | 43 | W79034   | ROLAMENTO DE ESFERAS                  | 1 |
| 37 | R0963700 | LAGARTAS PARA PISCINAS DESLIZANTES | 1 |    |          |                                       |   |