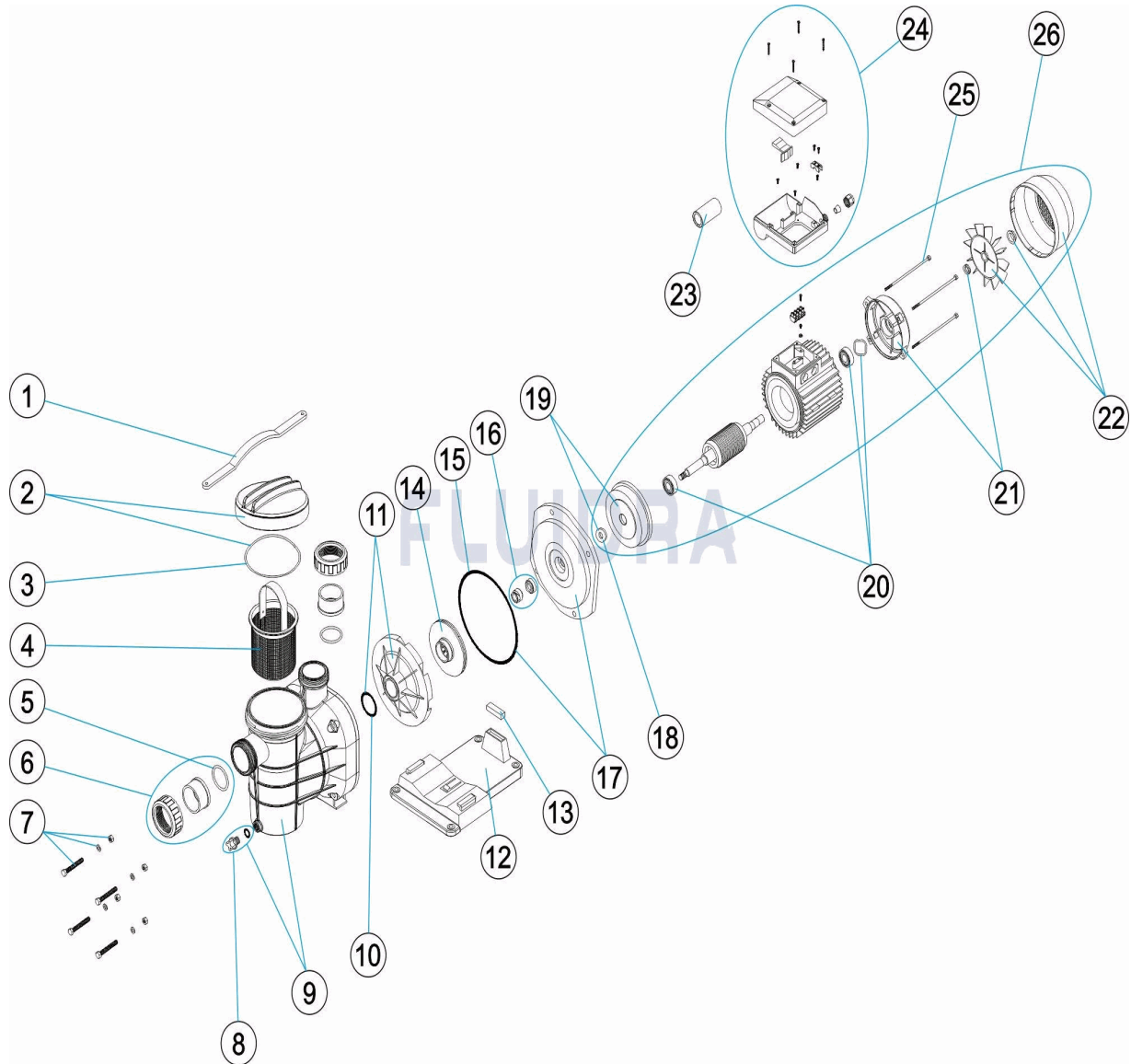


CODIGO SA033M, SA033M-IF, SA050M, SA050M-IF, SA050T, SA050T-IF, SA075M, SA075M-IF, SA075T, SA075T-IF, SA100M, SA100M-IF, SA100T, SA100T-IF, SA125M, SA125M-IF, SA125T, SA125T-IF

DESCRIPCION: BOMBA AMERICA



ESPAÑOL

POS	CODIGO	DESCRIPCION	CANTIDAD	POS	CODIGO	DESCRIPCION	CANTIDAD
1	SP-05-0012	LLAVE TAPA PREFILTRO		14	* SP-05-0027	TURBINA 0,33 CV	
2	SP-05-0013	CIERRE PREFILTRO		14	* SP-05-0028	TURBINA ½ CV. II III	
3	SP-05-0014	JUNTA TORICA D. 118X4		14	* SP-05-0029	TURBINA ¾ CV. II III	
4	SP-05-0015	CESTO PREFILTRO		14	* SP-05-0030	TURBINA 1 CV. II III	
5	SP-05-0016	JUNTA TORICA		14	* SP-05-0031	TURBINA 1 ½ CV. II III	
6	* SP-05-0017	ACCESORIOS ENLACE 1 ½"		15	SP-05-0032	JUNTA TORICA D. 180X5	
6	* SP-05-0018	ACCESORIOS ENLACE 1 ½"		16	SP-05-0033	JUNTA MECÁNICA	
7	SP-05-0020	TORNILLOS CUERPO BOMBA		17	* SP-05-0034	TAPA CUERPO BOMBA 0,33 / 0,50 CV	
8	SP-04-0008	TAPON ¼ VALVULA		17	* SP-05-0035	TAPA CUERPO BOMBA 0,75 / 1 / 1,5 CV	
9	SP-05-0021	CUERPO PREFILTRO		18	SP-05-0036	ARANDELA ROMPE AGUAS	
10	SP-05-0022	JUNTA TORICA D. 38X5		19	* SP-05-0037	BRIDA MOTOR 0,33 / 0,50 CV	

* NOTA OBSERVACIONES



DESPIECE

REV: 1

9141

FECHA: 28/04/2023

HOJA: 2/3

CODIGO SA033M, SA033M-IF, SA050M, SA050M-IF, SA050T, SA050T-IF, SA075M, SA075M-IF, SA075T, SA075T-IF, SA100M, SA100M-IF, SA100T, SA100T-IF, SA125M, SA125M-IF, SA125T, SA125T-IF

DESCRIPCION: BOMBA AMERICA

11	SP-05-0023	DIFUSOR	19	* SP-05-0038	BRIDA MOTOR 0,75 / 1 / 1,5 CV
12	SP-05-0024	PIE BOMBA	20	SP-05-0039	RODAMIENTO MOTOR
13	* SP-05-0348	SILENT-BLOCK (16X45X13)	21	* SP-05-0040	TAPA TRASERA MOTOR 0,33 / 0,50HP
13	* SP-05-0026	SILENT-BLOCK (9X45X13)	21	* SP-05-0041	TAPA TRASERA MOTOR ½-¾1 HP
22	* SP-05-0042	CJTO. VENTILADOR + VTAPA 0,33 / 0,50 CV	26	* SA050MR0300	MOTOR SA050M
22	* SP-05-0043	CJTO. VENTILADOR + VTAPA 0,75 / 1 / 1,5 C	26	* SA050TR0300	MOTOR SA050T
23	* SP-05-0044	CONDENSADOR 12MF. 0,33 / 0,50 CV.	26	* SA075MR0300	MOTOR SA075M
23	* SP-05-0045	CONDENSADOR 20MF. 0,75 / 1 / 1,5 CV.	26	* SA075TR0300	MOTOR SA075T
24	* SP-05-0046	CAJA CONEXIONES COMPLETA II	26	* SA100MR0300	MOTOR SA100M
24	* SP-05-0047	CAJA CONEXIONES COMPLETA III	26	* SA100TR0300IE2	MOTOR IE2 SA100T
25	* SP-05-0048	TIRANTE MOTOR 0,33 / 0,50 HP	26	* SA125MR0300	MOTOR SA125M
25	* SP-05-0049	TIRANTE MOTOR 0,75 / 1 / 1,5 HP	26	* SA125TR0300	MOTOR SA125T
26	* SA033MR0300	MOTOR SA033M			



DESPIECE

REV: 1

9141

FECHA: 28/04/2023

HOJA: 3/3

CODIGO SA033M, SA033M-IF, SA050M, SA050M-IF, SA050T, SA050T-IF, SA075M, SA075M-IF, SA075T, SA075T-IF, SA100M, SA100M-IF, SA100T, SA100T-IF, SA125M, SA125M-IF, SA125T, SA125T-IF

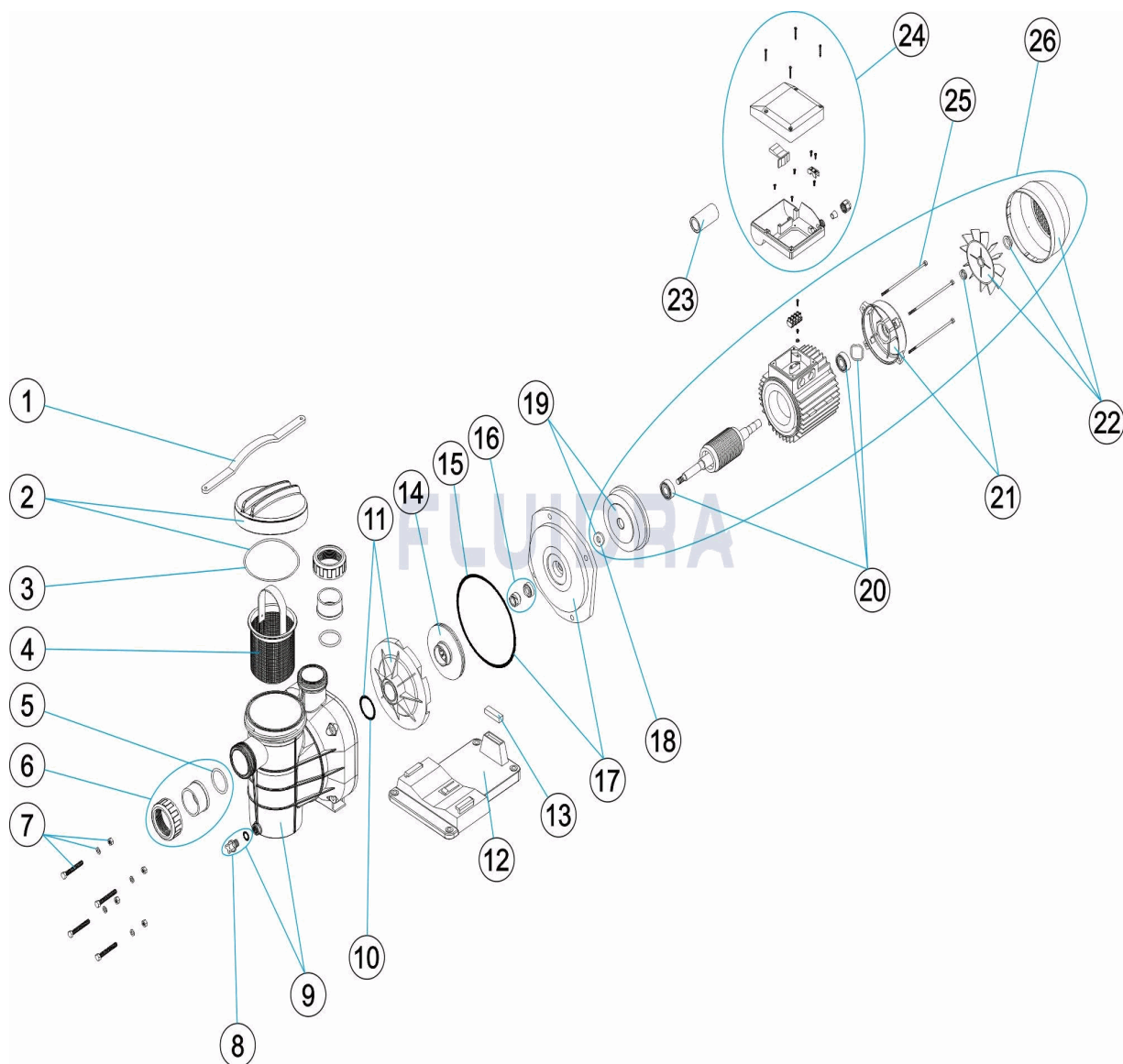
DESCRIPCION: BOMBA AMERICA

OBSERVACIONES

POS	CODIGO	OBSERVACIONES
6	* SP-05-0017	PARA: SA033M, SA050M, SA050T, SA075M, SA075T, SA100M, SA100T, SA125M, SA125T METRIC
6	* SP-05-0018	PARA: SA033M-IF, SA050M-IF, SA050T-IF, SA075M-IF, SA075T-IF, SA100M-IF, SA100T-IF, SA125M-IF, SA125T-IF IMPERIAL
13	* SP-05-0348	PARA: SA033M, SA033M-IF, SA050M, SA050M-IF, SA050T, SA050T-IF
13	* SP-05-0026	PARA: SA075M, SA075M-IF, SA075T, SA075T-IF, SA100M, SA100M-IF, SA100T, SA100T-IF, SA125M, SA125M-IF, SA125T, SA125T-IF
14	* SP-05-0027	PARA: SA033M, SA033M-IF
14	* SP-05-0028	PARA: SA050M, SA050M-IF, SA050T, SA050T-IF
14	* SP-05-0029	PARA: SA075M, SA075M-IF, SA075T, SA075T-IF
14	* SP-05-0030	PARA: SA100M, SA100M-IF, SA100T, SA100T-IF
14	* SP-05-0031	PARA: SA125M, SA125M-IF, SA125T, SA125T-IF
17	* SP-05-0034	PARA: SA033M, SA033M-IF, SA050M, SA050M-IF, SA050T, SA050T-IF
17	* SP-05-0035	PARA: SA075M, SA075M-IF, SA075T, SA075T-IF, SA100M, SA100M-IF, SA100T, SA100T-IF, SA125M, SA125M-IF, SA125T, SA125T-IF
19	* SP-05-0037	PARA: SA033M, SA033M-IF, SA050M, SA050M-IF, SA050T, SA050T-IF
19	* SP-05-0038	PARA: SA075M, SA075M-IF, SA075T, SA075T-IF, SA100M, SA100M-IF, SA100T, SA100T-IF, SA125M, SA125M-IF, SA125T, SA125T-IF
21	* SP-05-0040	PARA: SA033M, SA033M-IF, SA050M, SA050M-IF, SA050T, SA050T-IF
21	* SP-05-0041	PARA: SA075M, SA075M-IF, SA075T, SA075T-IF, SA100M, SA100M-IF, SA100T, SA100T-IF, SA125M, SA125M-IF, SA125T, SA125T-IF
22	* SP-05-0042	PARA: SA033M, SA033M-IF, SA050M, SA050M-IF, SA050T, SA050T-IF
22	* SP-05-0043	PARA: SA075M, SA075M-IF, SA075T, SA075T-IF, SA100M, SA100M-IF, SA100T, SA100T-IF, SA125M, SA125M-IF, SA125T, SA125T-IF
23	* SP-05-0044	PARA: SA033M, SA033M-IF, SA050M, SA050M-IF
23	* SP-05-0045	PARA: SA075M, SA075M-IF, SA100M, SA100M-IF, SA125M, SA125M-IF
24	* SP-05-0046	PARA: SA033M, SA033M-IF, SA050M, SA050M-IF, SA075M, SA075M-IF, SA100M, SA100M-IF, SA125M, SA125M-IF
24	* SP-05-0047	PARA: SA050T, SA050T-IF, SA075T, SA075T-IF, SA100T, SA100T-IF, SA125T, SA125T-IF
25	* SP-05-0048	PARA: SA033M, SA033M-IF, SA050M, SA050M-IF, SA050T, SA050T-IF
25	* SP-05-0049	PARA: SA075M, SA075M-IF, SA075T, SA075T-IF, SA100M, SA100M-IF, SA100T, SA100T-IF, SA125M, SA125M-IF, SA125T, SA125T-IF
26	* SA033MR0300	PARA: SA033M, SA033M-IF
26	* SA050MR0300	PARA: SA050M, SA050M-IF
26	* SA050TR0300	PARA: SA050T, SA050T-IF
26	* SA075MR0300	PARA: SA075M, SA075M-IF
26	* SA075TR0300	PARA: SA075T, SA075T-IF
26	* SA100MR0300	PARA: SA100M, SA100M-IF
26	* SA100TR0300IE2	PARA: SA100T, SA100T-IF
26	* SA125MR0300	PARA: SA125M, SA125M-IF
26	* SA125TR0300	PARA: SA125T, SA125T-IF

CODE **SA033M, SA033M-IF, SA050M, SA050M-IF, SA050T, SA050T-IF, SA075M, SA075M-IF, SA075T, SA075T-IF, SA100M, SA100M-IF, SA100T, SA100T-IF, SA125M, SA125M-IF, SA125T, SA125T-IF**

DESCRIPTION: **POMPE AMERICA**



FRANCAIS

POS	CODE	DESCRIPTION	QUANTITE	POS	CODE	DESCRIPTION	QUANTITE
1	SP-05-0012	CLE COUVERCLE		14	* SP-05-0027	TURBINE 0,33 CV	
2	SP-05-0013	FERMETURE PREFILTRE		14	* SP-05-0028	TURBINE 1/2 CV. II III	
3	SP-05-0014	JOINT TORIQUE D 118X4		14	* SP-05-0029	TURBINE 3/4 CV. II III	
4	SP-05-0015	PANIER PRÉFILTRE		14	* SP-05-0030	TURBINE 1 CV. II III	
5	SP-05-0016	JOINT TORIQUE		14	* SP-05-0031	TURBINE 1 1/2 CV. II III	
6	* SP-05-0017	RACCORDS UNION 1 1/2"		15	SP-05-0032	JOINT TORIQUE D 180X5	
6	* SP-05-0018	RACCORDS UNION 1 1/2"		16	SP-05-0033	GARNITURE MÉCANIQUE	
7	SP-05-0020	VIS CORPS POMPE		17	* SP-05-0034	COUVERCLE CORPS DE POMPE 0,33 / 0,50	
8	SP-04-0008	BOUCHON 1/4' DE VANNE		17	* SP-05-0035	COUVERCLE CORPS DE POMPE 0,75 / 1 / 1	
9	SP-05-0021	CORPS PREFILTRE		18	SP-05-0036	RONDELLE BRISE EAU	
10	SP-05-0022	JOINT TORIQUE D 38X5		19	* SP-05-0037	FLASQUE ACCOUP. MOTEUR 0,33 / 0,50 CV	

* VOIR FICHE D'OBSERVATIONS

CODE SA033M, SA033M-IF, SA050M, SA050M-IF, SA050T, SA050T-IF, SA075M, SA075M-IF, SA075T, SA075T-IF, SA100M, SA100M-IF, SA100T, SA100T-IF, SA125M, SA125M-IF, SA125T, SA125T-IF

DESCRIPTION: POMPE AMERICA

11	SP-05-0023	DIFFUSEUR	19	* SP-05-0038	FLASQUE ACCOUP. MOTEUR 0,75 / 1 / 1,5 C
12	SP-05-0024	SOCLE POMPE	20	SP-05-0039	ROULEMENT MOTEUR
13	* SP-05-0348	SILENT-BLOCK (16X45X13)	21	* SP-05-0040	COUVERCLE ARRIÈRE MOTEUR 0,33 / 0,50
13	* SP-05-0026	SILENT-BLOCK (9X45X13)	21	* SP-05-0041	COUVERCLE ARRIÈRE MOTEUR 1/2-3/41 H
22	* SP-05-0042	ENSEMBLE VENTILATEUR + COUVERCLE I	26	* SA050MR0300	MOTEUR SA050M
22	* SP-05-0043	ENSEMBLE VENTILATEUR + COUVERCLE I	26	* SA050TR0300	MOTEUR SA050T
23	* SP-05-0044	CONDENSATEUR 12 UF 0,33 / 0,50 HP.	26	* SA075MR0300	MOTEUR SA075M
23	* SP-05-0045	CONDENSATEUR 20 UF 0,75 / 1 / 1,5 HP.	26	* SA075TR0300	MOTEUR SA075T
24	* SP-05-0046	BOTILLER DE CONNECTIONS II	26	* SA100MR0300	MOTEUR SA100M
24	* SP-05-0047	BOTILLER DE CONNECTIONS III	26	* SA100TR0300IE2	MOTEUR IE2 SA100T
25	* SP-05-0048	COLLIER DE MAINTIEN EXTÉRIEUR DE TU	26	* SA125MR0300	MOTEUR SA125M
25	* SP-05-0049	COLLIER DE MAINTIEN EXTÉRIEUR DE TU	26	* SA125TR0300	MOTEUR SA125T
26	* SA033MR0300	MOTEUR SA033M			

CODE SA033M, SA033M-IF, SA050M, SA050M-IF, SA050T, SA050T-IF, SA075M, SA075M-IF, SA075T, SA075T-IF, SA100M, SA100M-IF, SA100T, SA100T-IF, SA125M, SA125M-IF, SA125T, SA125T-IF

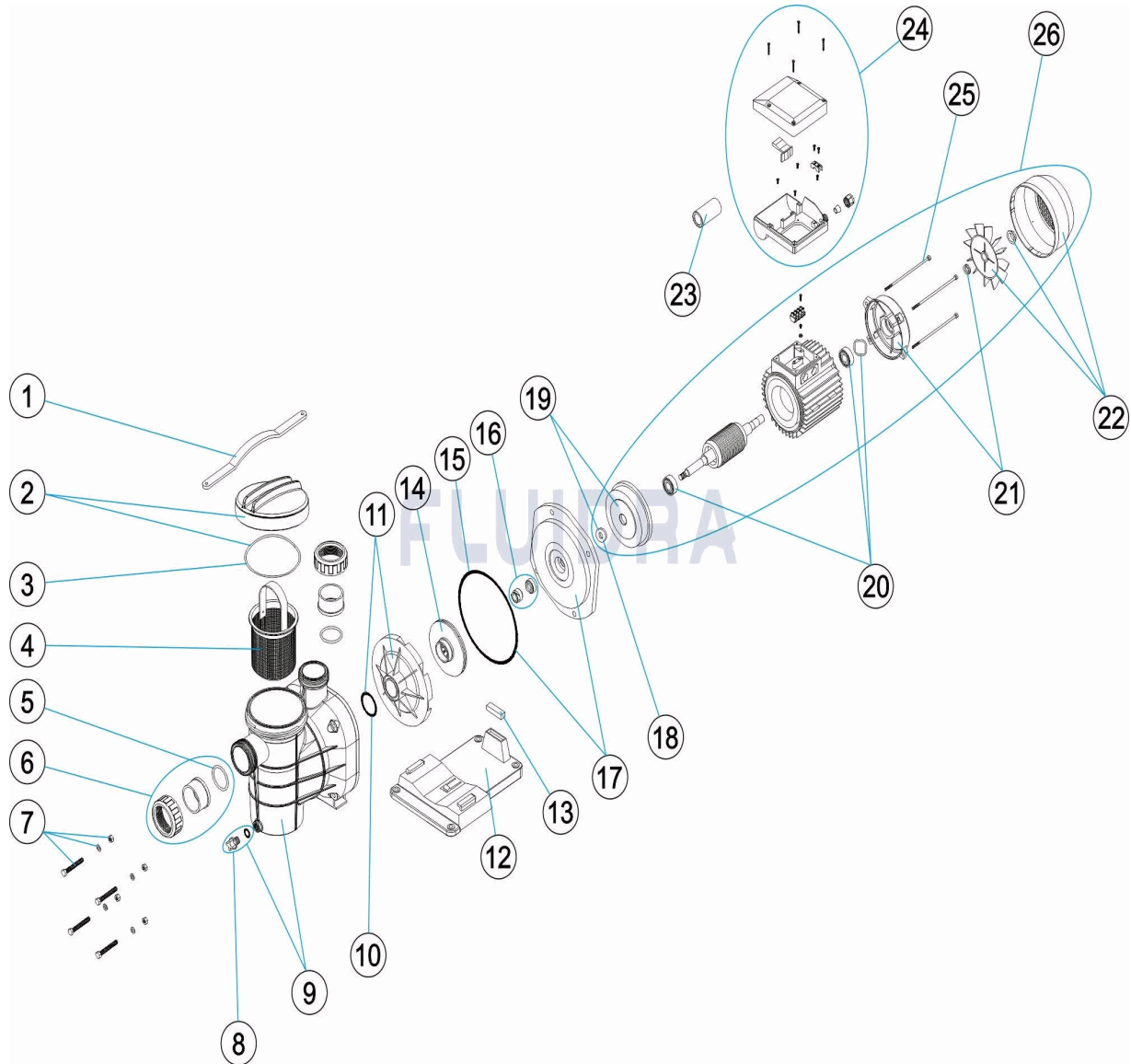
DESCRIPTION: POMPE AMERICA

OBSERVATIONS

POS	CODE	OBSERVATIONS
6	* SP-05-0017	POUR: SA033M, SA050M, SA050T, SA075M, SA075T, SA100M, SA100T, SA125M, SA125T METRIC
6	* SP-05-0018	POUR: SA033M-IF, SA050M-IF, SA050T-IF, SA075M-IF, SA075T-IF, SA100M-IF, SA100T-IF, SA125M-IF, SA125T-IF IMPERIAL
13	* SP-05-0348	POUR: SA033M, SA033M-IF, SA050M, SA050M-IF, SA050T, SA050T-IF
13	* SP-05-0026	POUR: SA075M, SA075M-IF, SA075T, SA075T-IF, SA100M, SA100M-IF, SA100T, SA100T-IF, SA125M, SA125M-IF, SA125T, SA125T-IF
14	* SP-05-0027	POUR: SA033M, SA033M-IF
14	* SP-05-0028	POUR: SA050M, SA050M-IF, SA050T, SA050T-IF
14	* SP-05-0029	POUR: SA075M, SA075M-IF, SA075T, SA075T-IF
14	* SP-05-0030	POUR: SA100M, SA100M-IF, SA100T, SA100T-IF
14	* SP-05-0031	POUR: SA125M, SA125M-IF, SA125T, SA125T-IF
17	* SP-05-0034	POUR: SA033M, SA033M-IF, SA050M, SA050M-IF, SA050T, SA050T-IF
17	* SP-05-0035	POUR: SA075M, SA075M-IF, SA075T, SA075T-IF, SA100M, SA100M-IF, SA100T, SA100T-IF, SA125M, SA125M-IF, SA125T, SA125T-IF
19	* SP-05-0037	POUR: SA033M, SA033M-IF, SA050M, SA050M-IF, SA050T, SA050T-IF
19	* SP-05-0038	POUR: SA075M, SA075M-IF, SA075T, SA075T-IF, SA100M, SA100M-IF, SA100T, SA100T-IF, SA125M, SA125M-IF, SA125T, SA125T-IF
21	* SP-05-0040	POUR: SA033M, SA033M-IF, SA050M, SA050M-IF, SA050T, SA050T-IF
21	* SP-05-0041	POUR: SA075M, SA075M-IF, SA075T, SA075T-IF, SA100M, SA100M-IF, SA100T, SA100T-IF, SA125M, SA125M-IF, SA125T, SA125T-IF
22	* SP-05-0042	POUR: SA033M, SA033M-IF, SA050M, SA050M-IF, SA050T, SA050T-IF
22	* SP-05-0043	POUR: SA075M, SA075M-IF, SA075T, SA075T-IF, SA100M, SA100M-IF, SA100T, SA100T-IF, SA125M, SA125M-IF, SA125T, SA125T-IF
23	* SP-05-0044	POUR: SA033M, SA033M-IF, SA050M, SA050M-IF
23	* SP-05-0045	POUR: SA075M, SA075M-IF, SA100M, SA100M-IF, SA125M, SA125M-IF
24	* SP-05-0046	POUR: SA033M, SA033M-IF, SA050M, SA050M-IF, SA075M, SA075M-IF, SA100M, SA100M-IF, SA125M, SA125M-IF
24	* SP-05-0047	POUR: SA050T, SA050T-IF, SA075T, SA075T-IF, SA100T, SA100T-IF, SA125T, SA125T-IF
25	* SP-05-0048	POUR: SA033M, SA033M-IF, SA050M, SA050M-IF, SA050T, SA050T-IF
25	* SP-05-0049	POUR: SA075M, SA075M-IF, SA075T, SA075T-IF, SA100M, SA100M-IF, SA100T, SA100T-IF, SA125M, SA125M-IF, SA125T, SA125T-IF
26	* SA033MR0300	POUR: SA033M, SA033M-IF
26	* SA050MR0300	POUR: SA050M, SA050M-IF
26	* SA050TR0300	POUR: SA050T, SA050T-IF
26	* SA075MR0300	POUR: SA075M, SA075M-IF
26	* SA075TR0300	POUR: SA075T, SA075T-IF
26	* SA100MR0300	POUR: SA100M, SA100M-IF
26	* SA100TR0300IE2	POUR: SA100T, SA100T-IF
26	* SA125MR0300	POUR: SA125M, SA125M-IF
26	* SA125TR0300	POUR: SA125T, SA125T-IF

CODE SA033M, SA033M-IF, SA050M, SA050M-IF, SA050T, SA050T-IF, SA075M, SA075M-IF, SA075T, SA075T-IF, SA100M, SA100M-IF, SA100T, SA100T-IF, SA125M, SA125M-IF, SA125T, SA125T-IF

DESCRIPTION: AMERICA PUMP



ENGLISH

POS	CODE	DESCRIPTION	QUANTITY	POS	CODE	DESCRIPTION	QUANTITY
1	SP-05-0012	LID KEY		14	* SP-05-0027	IMPELLER 0,33 CV	
2	SP-05-0013	PRE-FILTER CLOSURE		14	* SP-05-0028	IMPELLER 1/2 CV. II III	
3	SP-05-0014	O' RING D 118X4		14	* SP-05-0029	IMPELLER 3/4 CV. II III	
4	SP-05-0015	PRE-FILTER BASKET		14	* SP-05-0030	IMPELLER 1 CV. II III	
5	SP-05-0016	O' RING		14	* SP-05-0031	IMPELLER 1 1/2 CV. II III	
6	* SP-05-0017	UNION FITTINGS 1 1/2"		15	SP-05-0032	O' RING D 180X5	
6	* SP-05-0018	UNION FITTINGS 1 1/2"		16	SP-05-0033	MECHANICAL SEAL	
7	SP-05-0020	SCREWS FOR PUMP BODY		17	* SP-05-0034	0,33 / 0,50 CV BLACK PLATE	
8	SP-04-0008	PLUG 1/4"		17	* SP-05-0035	0,75 / 1 / 1,5 CV BLACK PLATE	
9	SP-05-0021	PREFILTER BODY		18	SP-05-0036	BREAKWATER WASHER	
10	SP-05-0022	O' RING D 38X5		19	* SP-05-0037	MOTOR CLAMP 0,33 / 0,50 CV	



PARTS BREAKDOWN

REV.: 1

9141

DATE: 28/04/2023

SHEET: 2/3

CODE SA033M, SA033M-IF, SA050M, SA050M-IF, SA050T, SA050T-IF, SA075M,
SA075M-IF, SA075T, SA075T-IF, SA100M, SA100M-IF, SA100T,
SA100T-IF, SA125M, SA125M-IF, SA125T, SA125T-IF

DESCRIPTION: AMERICA PUMP

11	SP-05-0023	DIFFUSER	19	* SP-05-0038	MOTOR CLAMP 0,75 / 1 / 1,5 CV
12	SP-05-0024	PUMP BASE	20	SP-05-0039	MOTOR BEARINGS
13	* SP-05-0348	SILENTBLOCK (16X45X13)	21	* SP-05-0040	REAR MOTOR COVER 0,33 / 0,50 HP
13	* SP-05-0026	SILENTBLOCK (9X45X13)	21	* SP-05-0041	REAR MOTOR COVER 1/2-3/41 HP
22	* SP-05-0042	FAN + COVER ASSEMBLY FOR 0,33 / 0,50 t	26	* SA050MR0300	MOTOR SA050M
22	* SP-05-0043	FAN + COVER ASSEMBLY FOR 0,75 / 1 / 1,5	26	* SA050TR0300	MOTOR SA050T
23	* SP-05-0044	CONDENSER 12 UF 0,33 / 0,50 HP.	26	* SA075MR0300	MOTOR SA075M
23	* SP-05-0045	CONDENSER 20 UF 0,75 / 1 / 1,5 HP.	26	* SA075TR0300	MOTOR SA075T
24	* SP-05-0046	TERMINAL BOX II	26	* SA100MR0300	MOTOR SA100M
24	* SP-05-0047	TERMINAL BOX III	26	* SA100TR0300IE2	MOTOR IE2 SA100T
25	* SP-05-0048	MOTOR SUPPORT 0,33 / 0,50 HP	26	* SA125MR0300	MOTOR SA125M
25	* SP-05-0049	MOTOR SUPPORT 0,75 / 1 / 1,5 HP	26	* SA125TR0300	MOTOR SA125T
26	* SA033MR0300	MOTOR SA033M			

* SEE OBSERVATIONS SHEET



PARTS BREAKDOWN

REV.: 1
DATE: 28/04/2023
SHEET: 3/3

9141

CODE SA033M, SA033M-IF, SA050M, SA050M-IF, SA050T, SA050T-IF, SA075M, SA075M-IF, SA075T, SA075T-IF, SA100M, SA100M-IF, SA100T, SA100T-IF, SA125M, SA125M-IF, SA125T, SA125T-IF

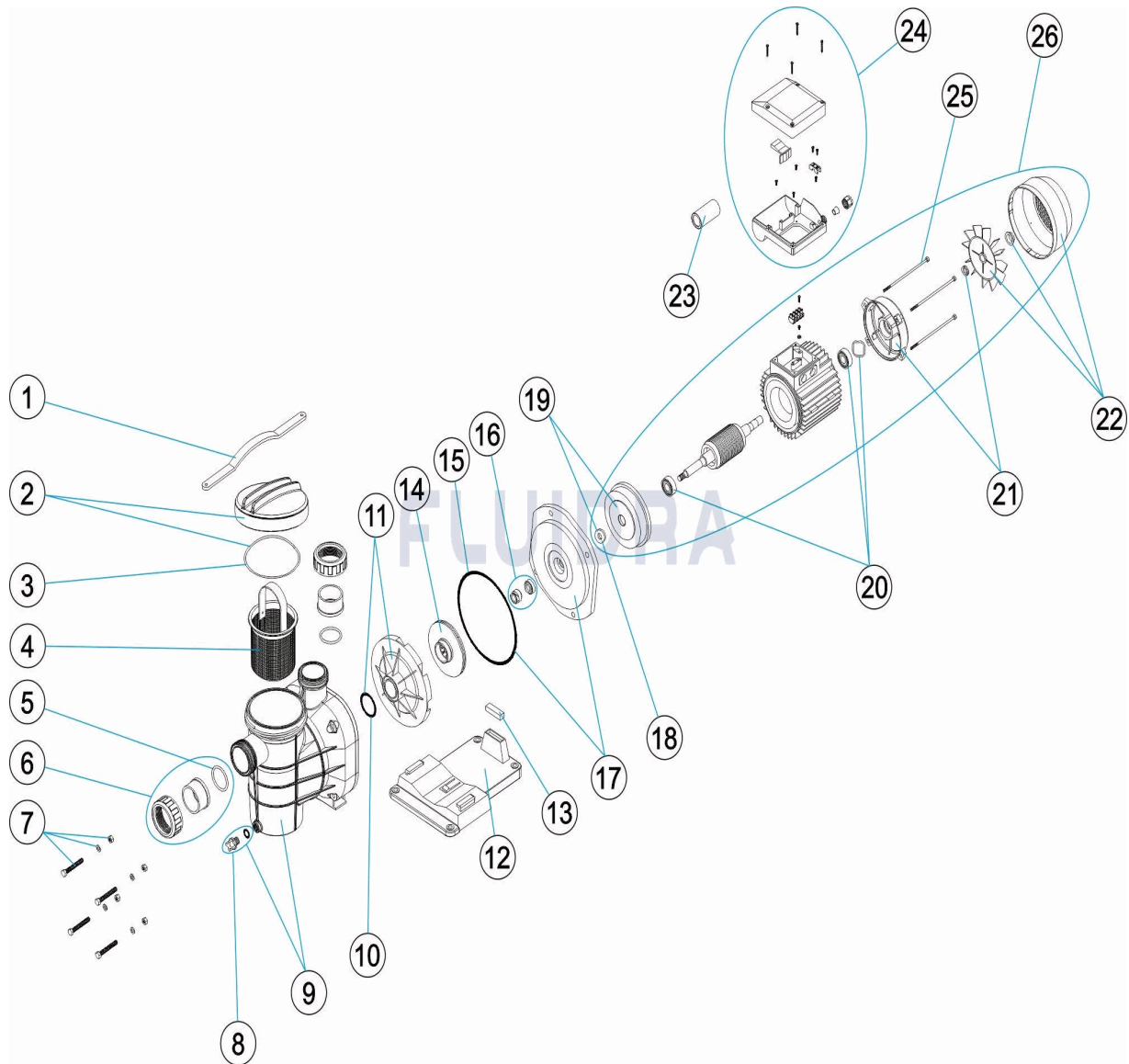
DESCRIPTION: AMERICA PUMP

OBSERVATIONS

POS	CODE	OBSERVATIONS
6	* SP-05-0017	FOR: SA033M, SA050M, SA050T, SA075M, SA075T, SA100M, SA100T, SA125M, SA125T METRIC
6	* SP-05-0018	FOR: SA033M-IF, SA050M-IF, SA050T-IF, SA075M-IF, SA075T-IF, SA100M-IF, SA100T-IF, SA125M-IF, SA125T-IF IMPERIAL
13	* SP-05-0348	FOR: SA033M, SA033M-IF, SA050M, SA050M-IF, SA050T, SA050T-IF
13	* SP-05-0026	FOR: SA075M, SA075M-IF, SA075T, SA075T-IF, SA100M, SA100M-IF, SA100T, SA100T-IF, SA125M, SA125M-IF, SA125T, SA125T-IF
14	* SP-05-0027	FOR: SA033M, SA033M-IF
14	* SP-05-0028	FOR: SA050M, SA050M-IF, SA050T, SA050T-IF
14	* SP-05-0029	FOR: SA075M, SA075M-IF, SA075T, SA075T-IF
14	* SP-05-0030	FOR: SA100M, SA100M-IF, SA100T, SA100T-IF
14	* SP-05-0031	FOR: SA125M, SA125M-IF, SA125T, SA125T-IF
17	* SP-05-0034	FOR: SA033M, SA033M-IF, SA050M, SA050M-IF, SA050T, SA050T-IF
17	* SP-05-0035	FOR: SA075M, SA075M-IF, SA075T, SA075T-IF, SA100M, SA100M-IF, SA100T, SA100T-IF, SA125M, SA125M-IF, SA125T, SA125T-IF
19	* SP-05-0037	FOR: SA033M, SA033M-IF, SA050M, SA050M-IF, SA050T, SA050T-IF
19	* SP-05-0038	FOR: SA075M, SA075M-IF, SA075T, SA075T-IF, SA100M, SA100M-IF, SA100T, SA100T-IF, SA125M, SA125M-IF, SA125T, SA125T-IF
21	* SP-05-0040	FOR: SA033M, SA033M-IF, SA050M, SA050M-IF, SA050T, SA050T-IF
21	* SP-05-0041	FOR: SA075M, SA075M-IF, SA075T, SA075T-IF, SA100M, SA100M-IF, SA100T, SA100T-IF, SA125M, SA125M-IF, SA125T, SA125T-IF
22	* SP-05-0042	FOR: SA033M, SA033M-IF, SA050M, SA050M-IF, SA050T, SA050T-IF
22	* SP-05-0043	FOR: SA075M, SA075M-IF, SA075T, SA075T-IF, SA100M, SA100M-IF, SA100T, SA100T-IF, SA125M, SA125M-IF, SA125T, SA125T-IF
23	* SP-05-0044	FOR: SA033M, SA033M-IF, SA050M, SA050M-IF
23	* SP-05-0045	FOR: SA075M, SA075M-IF, SA100M, SA100M-IF, SA125M, SA125M-IF
24	* SP-05-0046	FOR: SA033M, SA033M-IF, SA050M, SA050M-IF, SA075M, SA075M-IF, SA100M, SA100M-IF, SA125M, SA125M-IF
24	* SP-05-0047	FOR: SA050T, SA050T-IF, SA075T, SA075T-IF, SA100T, SA100T-IF, SA125T, SA125T-IF
25	* SP-05-0048	FOR: SA033M, SA033M-IF, SA050M, SA050M-IF, SA050T, SA050T-IF
25	* SP-05-0049	FOR: SA075M, SA075M-IF, SA075T, SA075T-IF, SA100M, SA100M-IF, SA100T, SA100T-IF, SA125M, SA125M-IF, SA125T, SA125T-IF
26	* SA033MR0300	FOR: SA033M, SA033M-IF
26	* SA050MR0300	FOR: SA050M, SA050M-IF
26	* SA050TR0300	FOR: SA050T, SA050T-IF
26	* SA075MR0300	FOR: SA075M, SA075M-IF
26	* SA075TR0300	FOR: SA075T, SA075T-IF
26	* SA100MR0300	FOR: SA100M, SA100M-IF
26	* SA100TR0300IE2	FOR: SA100T, SA100T-IF
26	* SA125MR0300	FOR: SA125M, SA125M-IF
26	* SA125TR0300	FOR: SA125T, SA125T-IF

CODICE SA033M, SA033M-IF, SA050M, SA050M-IF, SA050T, SA050T-IF, SA075M, SA075M-IF, SA075T, SA075T-IF, SA100M, SA100M-IF, SA100T, SA100T-IF, SA125M, SA125M-IF, SA125T, SA125T-IF

DESCRIZIONE: POMPA AMERICA



ITALIANO

POS	CODICE	DESCRIZIONE	QUANTITA'	POS	CODICE	DESCRIZIONE	QUANTITA'
1	SP-05-0012	CHIAVE COPERCHIO		14	* SP-05-0027	GIRANTE 0,33 CV	
2	SP-05-0013	CHIUSURA PREFILTRO		14	* SP-05-0028	GIRANTE 1/2 CV. II III	
3	SP-05-0014	O-RING D 118X4		14	* SP-05-0029	GIRANTE 3/4 CV. II III	
4	SP-05-0015	CESTO PREFILTRO		14	* SP-05-0030	GIRANTE 1 CV. II III	
5	SP-05-0016	O-RING		14	* SP-05-0031	GIRANTE 1 1/2 CV. II III	
6	* SP-05-0017	MANICOTTI DI UNIONE 1 1/2"		15	SP-05-0032	O-RING D 180X5	
6	* SP-05-0018	MANICOTTI DI UNIONE 1 1/2"		16	SP-05-0033	GUARNIZIONE MECCANICA	
7	SP-05-0020	VITI DEL CORPO POMPA		17	* SP-05-0034	COPERCHIO CORPO POMPA 0,33 / 0,50 CV	
8	SP-04-0008	COPERCHIO 1/4' VALVOLA		17	* SP-05-0035	COPERCHIO CORPO POMPA 0,75 / 1 / 1,5 C	
9	SP-05-0021	CORPO PREFILTRO		18	SP-05-0036	RONDELLA	
10	SP-05-0022	O-RING D 38X5		19	* SP-05-0037	FLANGIA MOTORE 0,33 / 0,50 CV	

* SI FACCIA RIFERIMENTO AL FOGLIO DELLE OSSERVAZIONI

CODICE SA033M, SA033M-IF, SA050M, SA050M-IF, SA050T, SA050T-IF, SA075M, SA075M-IF, SA075T, SA075T-IF, SA100M, SA100M-IF, SA100T, SA100T-IF, SA125M, SA125M-IF, SA125T, SA125T-IF

DESCRIZIONE: POMPA AMERICA

11	SP-05-0023	DIFFUSORE	19	* SP-05-0038	FLANGIA MOTORE 0,75 / 1 / 1,5 CV
12	SP-05-0024	BASAMENTO POMPA	20	SP-05-0039	CUSCINETTO MOTORE
13	* SP-05-0348	SILENTBLOC (16X45X13)	21	* SP-05-0040	COPERCHIO POSTERIORE MOTORE 0,33 /
13	* SP-05-0026	SILENTBLOC (9X45X13)	21	* SP-05-0041	COPERCHIO POSTERIORE MOTORE 1/2-3/
22	* SP-05-0042	GRUPPO VENTILATORE + COPERCHIO 0,3	26	* SA050MR0300	MOTORE SA050M
22	* SP-05-0043	GRUPPO VENTILATORE + COPERCHIO 0,7	26	* SA050TR0300	MOTORE SA050T
23	* SP-05-0044	CONDENSATORE 12 UF 0,33 / 0,50 HP.	26	* SA075MR0300	MOTORE SA075M
23	* SP-05-0045	CONDENSATORE 20 UF 0,75 / 1 / 1,5 HP.	26	* SA075TR0300	MOTORE SA075T
24	* SP-05-0046	COPERCHIO MORSETTIERA II	26	* SA100MR0300	MOTORE SA100M
24	* SP-05-0047	COPERCHIO MORSETTIERA III	26	* SA100TR0300IE2	MOTORE IE2 SA100T
25	* SP-05-0048	TIRANTE BRACCIO DOCCIA 0,33 / 0,50 HP	26	* SA125MR0300	MOTORE SA125M
25	* SP-05-0049	TIRANTE BRACCIO DOCCIA 0,75 / 1 / 1,5 HP	26	* SA125TR0300	MOTORE SA125T
26	* SA033MR0300	MOTORE SA033M			

CODICE SA033M, SA033M-IF, SA050M, SA050M-IF, SA050T, SA050T-IF, SA075M, SA075M-IF, SA075T, SA075T-IF, SA100M, SA100M-IF, SA100T, SA100T-IF, SA125M, SA125M-IF, SA125T, SA125T-IF

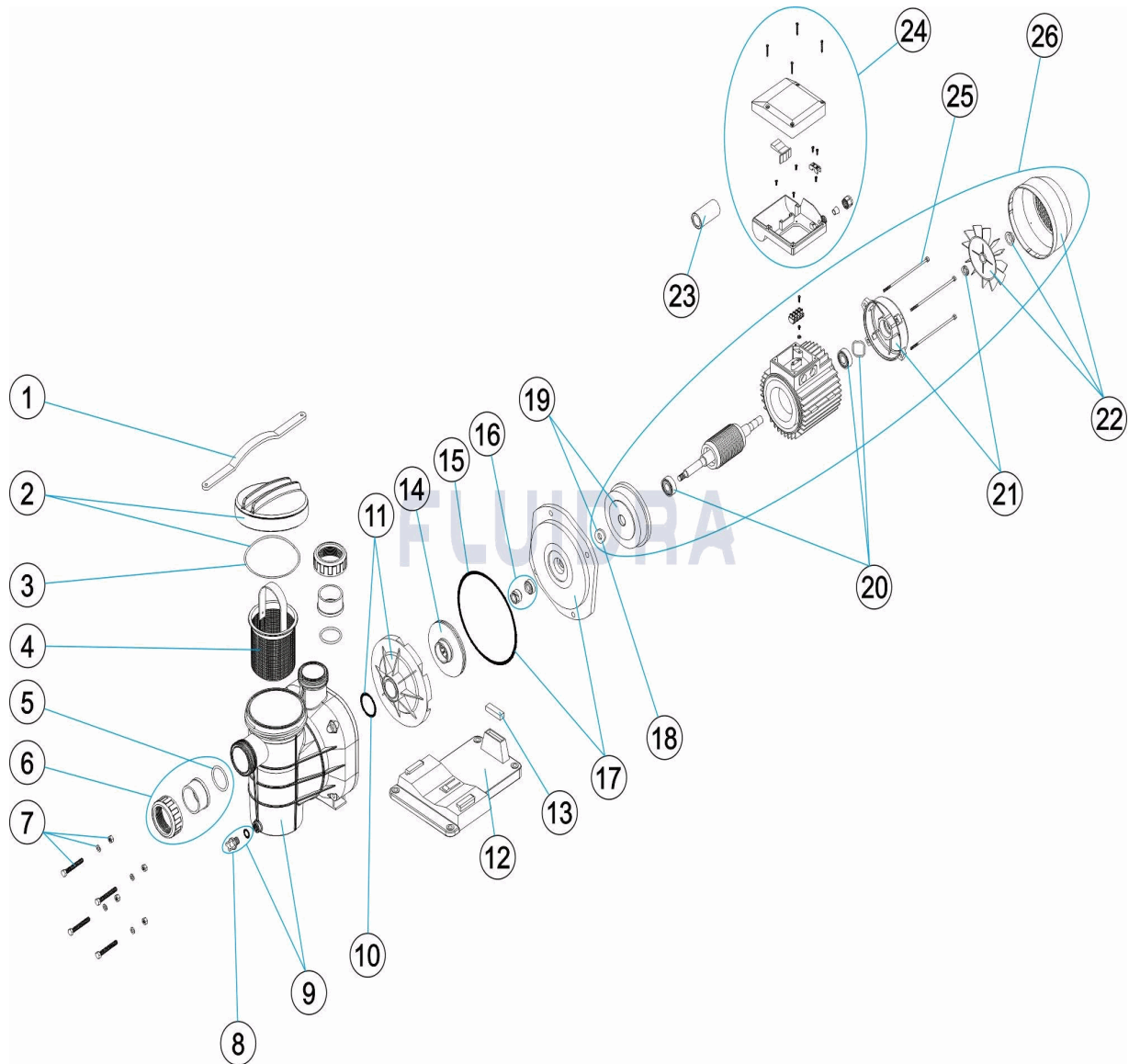
DESCRIZIONE: POMPA AMERICA

OSSERVAZIONI

POS	CODICE	OSSERVAZIONI
6	* SP-05-0017	PER: SA033M, SA050M, SA050T, SA075M, SA075T, SA100M, SA100T, SA125M, SA125T METRIC
6	* SP-05-0018	PER: SA033M-IF, SA050M-IF, SA050T-IF, SA075M-IF, SA075T-IF, SA100M-IF, SA100T-IF, SA125M-IF, SA125T-IF IMPERIAL
13	* SP-05-0348	PER: SA033M, SA033M-IF, SA050M, SA050M-IF, SA050T, SA050T-IF
13	* SP-05-0026	PER: SA075M, SA075M-IF, SA075T, SA075T-IF, SA100M, SA100M-IF, SA100T, SA100T-IF, SA125M, SA125M-IF, SA125T, SA125T-IF
14	* SP-05-0027	PER: SA033M, SA033M-IF
14	* SP-05-0028	PER: SA050M, SA050M-IF, SA050T, SA050T-IF
14	* SP-05-0029	PER: SA075M, SA075M-IF, SA075T, SA075T-IF
14	* SP-05-0030	PER: SA100M, SA100M-IF, SA100T, SA100T-IF
14	* SP-05-0031	PER: SA125M, SA125M-IF, SA125T, SA125T-IF
17	* SP-05-0034	PER: SA033M, SA033M-IF, SA050M, SA050M-IF, SA050T, SA050T-IF
17	* SP-05-0035	PER: SA075M, SA075M-IF, SA075T, SA075T-IF, SA100M, SA100M-IF, SA100T, SA100T-IF, SA125M, SA125M-IF, SA125T, SA125T-IF
19	* SP-05-0037	PER: SA033M, SA033M-IF, SA050M, SA050M-IF, SA050T, SA050T-IF
19	* SP-05-0038	PER: SA075M, SA075M-IF, SA075T, SA075T-IF, SA100M, SA100M-IF, SA100T, SA100T-IF, SA125M, SA125M-IF, SA125T, SA125T-IF
21	* SP-05-0040	PER: SA033M, SA033M-IF, SA050M, SA050M-IF, SA050T, SA050T-IF
21	* SP-05-0041	PER: SA075M, SA075M-IF, SA075T, SA075T-IF, SA100M, SA100M-IF, SA100T, SA100T-IF, SA125M, SA125M-IF, SA125T, SA125T-IF
22	* SP-05-0042	PER: SA033M, SA033M-IF, SA050M, SA050M-IF, SA050T, SA050T-IF
22	* SP-05-0043	PER: SA075M, SA075M-IF, SA075T, SA075T-IF, SA100M, SA100M-IF, SA100T, SA100T-IF, SA125M, SA125M-IF, SA125T, SA125T-IF
23	* SP-05-0044	PER: SA033M, SA033M-IF, SA050M, SA050M-IF
23	* SP-05-0045	PER: SA075M, SA075M-IF, SA100M, SA100M-IF, SA125M, SA125M-IF
24	* SP-05-0046	PER: SA033M, SA033M-IF, SA050M, SA050M-IF, SA075M, SA075M-IF, SA100M, SA100M-IF, SA125M, SA125M-IF
24	* SP-05-0047	PER: SA050T, SA050T-IF, SA075T, SA075T-IF, SA100T, SA100T-IF, SA125T, SA125T-IF
25	* SP-05-0048	PER: SA033M, SA033M-IF, SA050M, SA050M-IF, SA050T, SA050T-IF
25	* SP-05-0049	PER: SA075M, SA075M-IF, SA075T, SA075T-IF, SA100M, SA100M-IF, SA100T, SA100T-IF, SA125M, SA125M-IF, SA125T, SA125T-IF
26	* SA033MR0300	PER: SA033M, SA033M-IF
26	* SA050MR0300	PER: SA050M, SA050M-IF
26	* SA050TR0300	PER: SA050T, SA050T-IF
26	* SA075MR0300	PER: SA075M, SA075M-IF
26	* SA075TR0300	PER: SA075T, SA075T-IF
26	* SA100MR0300	PER: SA100M, SA100M-IF
26	* SA100TR0300IE2	PER: SA100T, SA100T-IF
26	* SA125MR0300	PER: SA125M, SA125M-IF
26	* SA125TR0300	PER: SA125T, SA125T-IF

CODE SA033M, SA033M-IF, SA050M, SA050M-IF, SA050T, SA050T-IF, SA075M,
 SA075M-IF, SA075T, SA075T-IF, SA100M, SA100M-IF, SA100T,
 SA100T-IF, SA125M, SA125M-IF, SA125T, SA125T-IF

BESCHREIBUNG: PUMPE AMERICA



DEUTSCH

POS	CODE	BESCHREIBUNG	MENGE	POS	CODE	BESCHREIBUNG	MENGE
1	SP-05-0012	SCHLÜSSEL VORFILTERDECKEL		14	* SP-05-0027	TURBINE 0,33 CV	
2	SP-05-0013	SCHLIESSVORRICHTUNG VORFILTER		14	* SP-05-0028	TURBINE 1/2 CV II III	
3	SP-05-0014	O-RING D. 118 X 4		14	* SP-05-0029	TURBINE 3/4 CV II III	
4	SP-05-0015	VORFILTERKORB		14	* SP-05-0030	TURBINE 1 CV II III	
5	SP-05-0016	O-RING		14	* SP-05-0031	TURBINE 1 1/2 CV II III	
6	* SP-05-0017	ANSCHLUSSZUBEHÖR 1 1/2"		15	SP-05-0032	O-RING D 180X5	
6	* SP-05-0018	ANSCHLUSSZUBEHÖR 1 1/2"		16	SP-05-0033	GLEITRINGDICHTUNG	
7	SP-05-0020	SCHRAUBEN PUMPENGEHÄUSE		17	* SP-05-0034	ABDECKUNG PUMPENGEHÄUSE 0,33 / 0,5C	
8	SP-04-0008	STOPFEN 1/4' VENTIL		17	* SP-05-0035	ABDECKUNG PUMPENGEHÄUSE 0,75 / 1 / 1	
9	SP-05-0021	GEHÄUSE VORFILTER		18	SP-05-0036	UNTERLEGSSCHEIBE WASSERBRECHER	
10	SP-05-0022	O-RING D. 38 X 5		19	* SP-05-0037	MOTORFLANSCH 0,33 / 0,50 CV	

* SIEHE ANMERKUGSBLATT

CODE SA033M, SA033M-IF, SA050M, SA050M-IF, SA050T, SA050T-IF, SA075M, SA075M-IF, SA075T, SA075T-IF, SA100M, SA100M-IF, SA100T, SA100T-IF, SA125M, SA125M-IF, SA125T, SA125T-IF

BESCHREIBUNG: PUMPE AMERICA

11	SP-05-0023	WASSERVERTEILER	19	* SP-05-0038	MOTORFLANSCH 0,75 / 1 / 1,5 CV
12	SP-05-0024	PUMPENFUSS	20	SP-05-0039	WÄLZLAGER MOTOR
13	* SP-05-0348	SCHWINGUNGSDÄMPFER (16 X 45 X 13)	21	* SP-05-0040	MOTORDECKEL HINTEN 0,33 / 0,50 HP
13	* SP-05-0026	SCHWINGUNGSDÄMPFER (9 X 45 X 13)	21	* SP-05-0041	MOTORDECKEL HINTEN 1/2 - 3/41 HP
22	* SP-05-0042	SET VENTILATOR MIT ABDECKUNG 0,33 / 1	26	* SA050MR0300	MOTOR SA050M
22	* SP-05-0043	SET VENTILATOR MIT ABDECKUNG 0,75 / 1	26	* SA050TR0300	MOTOR SA050T
23	* SP-05-0044	KONDENSATOR 12 MF 0,33 / 0,50 CV	26	* SA075MR0300	MOTOR SA075M
23	* SP-05-0045	KONDENSATOR 20 MF 0,75 / 1 / 1,5 CV	26	* SA075TR0300	MOTOR SA075T
24	* SP-05-0046	ANSCHLUSSGEHÄUSE KOMPLETT II	26	* SA100MR0300	MOTOR SA100M
24	* SP-05-0047	ANSCHLUSSGEHÄUSE KOMPLETT III	26	* SA100TR0300IE2	MOTOR IE2 SA100T
25	* SP-05-0048	MOTORZUGSTREBE 0,33 / 0,50 HP	26	* SA125MR0300	MOTOR SA125M
25	* SP-05-0049	MOTORZUGSTREBE 0,75 / 1 / 1,5 HP	26	* SA125TR0300	MOTOR SA125T
26	* SA033MR0300	MOTOR SA033M			

CODE SA033M, SA033M-IF, SA050M, SA050M-IF, SA050T, SA050T-IF, SA075M, SA075M-IF, SA075T, SA075T-IF, SA100M, SA100M-IF, SA100T, SA100T-IF, SA125M, SA125M-IF, SA125T, SA125T-IF

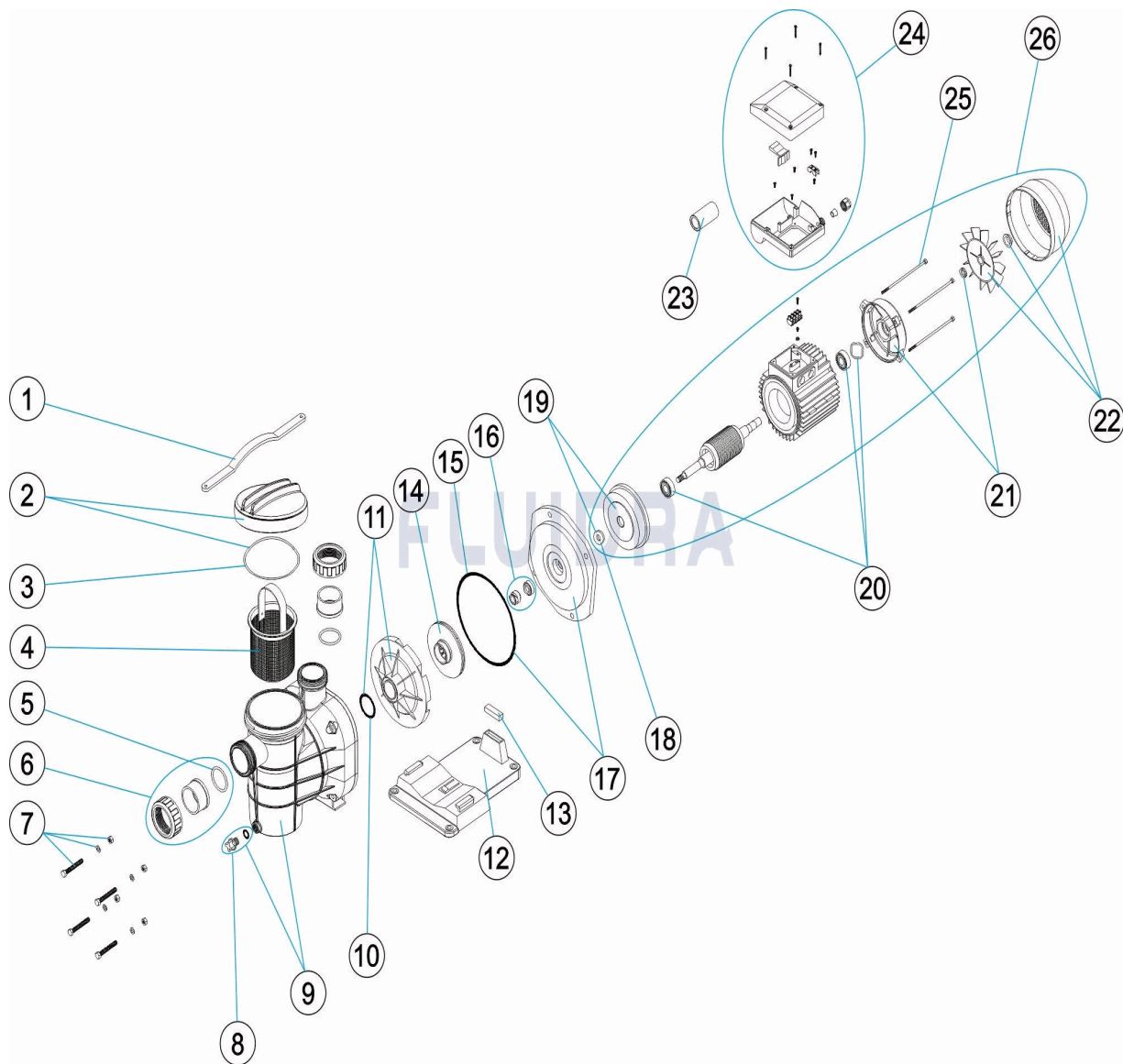
BESCHREIBUNG: PUMPE AMERICA

HINWEISE

POS	CODE	HINWEISE
6	* SP-05-0017	FÜR: SA033M, SA050M, SA050T, SA075M, SA075T, SA100M, SA100T, SA125M, SA125T METRIC
6	* SP-05-0018	FÜR: SA033M-IF, SA050M-IF, SA050T-IF, SA075M-IF, SA075T-IF, SA100M-IF, SA100T-IF, SA125M-IF, SA125T-IF IMPERIAL
13	* SP-05-0348	FÜR: SA033M, SA033M-IF, SA050M, SA050M-IF, SA050T, SA050T-IF
13	* SP-05-0026	FÜR: SA075M, SA075M-IF, SA075T, SA075T-IF, SA100M, SA100M-IF, SA100T, SA100T-IF, SA125M, SA125M-IF, SA125T, SA125T-IF
14	* SP-05-0027	FÜR: SA033M, SA033M-IF
14	* SP-05-0028	FÜR: SA050M, SA050M-IF, SA050T, SA050T-IF
14	* SP-05-0029	FÜR: SA075M, SA075M-IF, SA075T, SA075T-IF
14	* SP-05-0030	FÜR: SA100M, SA100M-IF, SA100T, SA100T-IF
14	* SP-05-0031	FÜR: SA125M, SA125M-IF, SA125T, SA125T-IF
17	* SP-05-0034	FÜR: SA033M, SA033M-IF, SA050M, SA050M-IF, SA050T, SA050T-IF
17	* SP-05-0035	FÜR: SA075M, SA075M-IF, SA075T, SA075T-IF, SA100M, SA100M-IF, SA100T, SA100T-IF, SA125M, SA125M-IF, SA125T, SA125T-IF
19	* SP-05-0037	FÜR: SA033M, SA033M-IF, SA050M, SA050M-IF, SA050T, SA050T-IF
19	* SP-05-0038	FÜR: SA075M, SA075M-IF, SA075T, SA075T-IF, SA100M, SA100M-IF, SA100T, SA100T-IF, SA125M, SA125M-IF, SA125T, SA125T-IF
21	* SP-05-0040	FÜR: SA033M, SA033M-IF, SA050M, SA050M-IF, SA050T, SA050T-IF
21	* SP-05-0041	FÜR: SA075M, SA075M-IF, SA075T, SA075T-IF, SA100M, SA100M-IF, SA100T, SA100T-IF, SA125M, SA125M-IF, SA125T, SA125T-IF
22	* SP-05-0042	FÜR: SA033M, SA033M-IF, SA050M, SA050M-IF, SA050T, SA050T-IF
22	* SP-05-0043	FÜR: SA075M, SA075M-IF, SA075T, SA075T-IF, SA100M, SA100M-IF, SA100T, SA100T-IF, SA125M, SA125M-IF, SA125T, SA125T-IF
23	* SP-05-0044	FÜR: SA033M, SA033M-IF, SA050M, SA050M-IF
23	* SP-05-0045	FÜR: SA075M, SA075M-IF, SA100M, SA100M-IF, SA125M, SA125M-IF
24	* SP-05-0046	FÜR: SA033M, SA033M-IF, SA050M, SA050M-IF, SA075M, SA075M-IF, SA100M, SA100M-IF, SA125M, SA125M-IF
24	* SP-05-0047	FÜR: SA050T, SA050T-IF, SA075T, SA075T-IF, SA100T, SA100T-IF, SA125T, SA125T-IF
25	* SP-05-0048	FÜR: SA033M, SA033M-IF, SA050M, SA050M-IF, SA050T, SA050T-IF
25	* SP-05-0049	FÜR: SA075M, SA075M-IF, SA075T, SA075T-IF, SA100M, SA100M-IF, SA100T, SA100T-IF, SA125M, SA125M-IF, SA125T, SA125T-IF
26	* SA033MR0300	FÜR: SA033M, SA033M-IF
26	* SA050MR0300	FÜR: SA050M, SA050M-IF
26	* SA050TR0300	FÜR: SA050T, SA050T-IF
26	* SA075MR0300	FÜR: SA075M, SA075M-IF
26	* SA075TR0300	FÜR: SA075T, SA075T-IF
26	* SA100MR0300	FÜR: SA100M, SA100M-IF
26	* SA100TR0300IE2	FÜR: SA100T, SA100T-IF
26	* SA125MR0300	FÜR: SA125M, SA125M-IF
26	* SA125TR0300	FÜR: SA125T, SA125T-IF

CODIGO SA033M, SA033M-IF, SA050M, SA050M-IF, SA050T, SA050T-IF, SA075M, SA075M-IF, SA075T, SA075T-IF, SA100M, SA100M-IF, SA100T, SA100T-IF, SA125M, SA125M-IF, SA125T, SA125T-IF

DESCRIÇÃO: BOMBA AMERICA



PORTUGUES

POS	CODIGO	DESCRIÇÃO	JANTIDADE	POS	CODIGO	DESCRIÇÃO	JANTIDADE
1	SP-05-0012	CHAVE TAMPA		14	* SP-05-0027	RODÍZIO 0,33 CV	
2	SP-05-0013	FECHO-PRÉ-FILTRO		14	* SP-05-0028	RODÍZIO 1/2 CV. II III	
3	SP-05-0014	JUNTA TÓRICA D 118X4		14	* SP-05-0029	RODÍZIO 3/4 CV. II III	
4	SP-05-0015	CESTO PRÉ-FILTRO		14	* SP-05-0030	RODÍZIO 1 CV. II III	
5	SP-05-0016	JUNTA TÓRICA		14	* SP-05-0031	RODÍZIO 1 1/2 CV. II III	
6	* SP-05-0017	ACESSÓRIOS DE UNIÃO 1 1/2		15	SP-05-0032	JUNTA TÓRICA D 180X5	
6	* SP-05-0018	ACESSÓRIOS DE UNIÃO 1 1/2"		16	SP-05-0033	JUNTA MECÂNICA	
7	SP-05-0020	PARAFUSOS CORPO BOMBA		17	* SP-05-0034	TAMPA CORPO BOMBA 0,33 / 0,50 CV	
8	SP-04-0008	TAMPÃO 1/4' VÁLVULA		17	* SP-05-0035	TAMPA CORPO BOMBA 0,75 / 1 / 1,5 CV	
9	SP-05-0021	CORPO PRÉ-FILTRO		18	SP-05-0036	ALHETA ROMPE ÁGUAS	
10	SP-05-0022	JUNTA TÓRICA D. 38X5		19	* SP-05-0037	MANILHA MOTOR 0,33 / 0,50 CV	

*** VEJA A FICHA DE OBSERVAÇÕES**

CODIGO SA033M, SA033M-IF, SA050M, SA050M-IF, SA050T, SA050T-IF, SA075M, SA075M-IF, SA075T, SA075T-IF, SA100M, SA100M-IF, SA100T, SA100T-IF, SA125M, SA125M-IF, SA125T, SA125T-IF

DESCRIÇÃO: BOMBA AMERICA

11	SP-05-0023	DIFUSOR	19	* SP-05-0038	MANILHA MOTOR 0,75 / 1 / 1,5 CV
12	SP-05-0024	PÉ BOMBA	20	SP-05-0039	ROLAMENTO MOTOR
13	* SP-05-0348	SILENT-BLOCK (16X45X13)	21	* SP-05-0040	TAMPA TRASEIRA MOTOR 0,33 / 0,50 HP
13	* SP-05-0026	SILENT-BLOCK (9X45X13)	21	* SP-05-0041	TAMPA TRASEIRA MOTOR 1/2-3/41 HP
22	* SP-05-0042	CONJUNTO VENTILADOR + TAMPA DE 0,3€	26	* SA050MR0300	MOTOR SA050M
22	* SP-05-0043	CONJUNTO VENTILADOR + TAMPA DE 0,7€	26	* SA050TR0300	MOTOR SA050T
23	* SP-05-0044	CONDENSADOR 12 UF 0,33 / 0,50 HP.	26	* SA075MR0300	MOTOR SA075M
23	* SP-05-0045	CONDENSADOR 20 UF 0,75 / 1 / 1,5 HP.	26	* SA075TR0300	MOTOR SA075T
24	* SP-05-0046	CAIXA BORNES II	26	* SA100MR0300	MOTOR SA100M
24	* SP-05-0047	CAIXA BORNES III	26	* SA100TR0300IE2	MOTOR IE2 SA100T
25	* SP-05-0048	TIRANTE BRAÇOS CHUVEIRO 0,33 / 0,50 H	26	* SA125MR0300	MOTOR SA125M
25	* SP-05-0049	TIRANTE BRAÇOS CHUVEIRO 0,75 / 1 / 1,5	26	* SA125TR0300	MOTOR SA125T
26	* SA033MR0300	MOTOR SA033M			

CODIGO SA033M, SA033M-IF, SA050M, SA050M-IF, SA050T, SA050T-IF, SA075M, SA075M-IF, SA075T, SA075T-IF, SA100M, SA100M-IF, SA100T, SA100T-IF, SA125M, SA125M-IF, SA125T, SA125T-IF

DESCRIÇÃO: BOMBA AMERICA

OBSERVAÇÕES

POS	CODIGO	OBSERVAÇÕES
6	* SP-05-0017	PARA: SA033M, SA050M, SA050T, SA075M, SA075T, SA100M, SA100T, SA125M, SA125T METRIC
6	* SP-05-0018	PARA: SA033M-IF, SA050M-IF, SA050T-IF, SA075M-IF, SA075T-IF, SA100M-IF, SA100T-IF, SA125M-IF, SA125T-IF IMPERIAL
13	* SP-05-0348	PARA: SA033M, SA033M-IF, SA050M, SA050M-IF, SA050T, SA050T-IF
13	* SP-05-0026	PARA: SA075M, SA075M-IF, SA075T, SA075T-IF, SA100M, SA100M-IF, SA100T, SA100T-IF, SA125M, SA125M-IF, SA125T, SA125T-IF
14	* SP-05-0027	PARA: SA033M, SA033M-IF
14	* SP-05-0028	PARA: SA050M, SA050M-IF, SA050T, SA050T-IF
14	* SP-05-0029	PARA: SA075M, SA075M-IF, SA075T, SA075T-IF
14	* SP-05-0030	PARA: SA100M, SA100M-IF, SA100T, SA100T-IF
14	* SP-05-0031	PARA: SA125M, SA125M-IF, SA125T, SA125T-IF
17	* SP-05-0034	PARA: SA033M, SA033M-IF, SA050M, SA050M-IF, SA050T, SA050T-IF
17	* SP-05-0035	PARA: SA075M, SA075M-IF, SA075T, SA075T-IF, SA100M, SA100M-IF, SA100T, SA100T-IF, SA125M, SA125M-IF, SA125T, SA125T-IF
19	* SP-05-0037	PARA: SA033M, SA033M-IF, SA050M, SA050M-IF, SA050T, SA050T-IF
19	* SP-05-0038	PARA: SA075M, SA075M-IF, SA075T, SA075T-IF, SA100M, SA100M-IF, SA100T, SA100T-IF, SA125M, SA125M-IF, SA125T, SA125T-IF
21	* SP-05-0040	PARA: SA033M, SA033M-IF, SA050M, SA050M-IF, SA050T, SA050T-IF
21	* SP-05-0041	PARA: SA075M, SA075M-IF, SA075T, SA075T-IF, SA100M, SA100M-IF, SA100T, SA100T-IF, SA125M, SA125M-IF, SA125T, SA125T-IF
22	* SP-05-0042	PARA: SA033M, SA033M-IF, SA050M, SA050M-IF, SA050T, SA050T-IF
22	* SP-05-0043	PARA: SA075M, SA075M-IF, SA075T, SA075T-IF, SA100M, SA100M-IF, SA100T, SA100T-IF, SA125M, SA125M-IF, SA125T, SA125T-IF
23	* SP-05-0044	PARA: SA033M, SA033M-IF, SA050M, SA050M-IF
23	* SP-05-0045	PARA: SA075M, SA075M-IF, SA100M, SA100M-IF, SA125M, SA125M-IF
24	* SP-05-0046	PARA: SA033M, SA033M-IF, SA050M, SA050M-IF, SA075M, SA075M-IF, SA100M, SA100M-IF, SA125M, SA125M-IF
24	* SP-05-0047	PARA: SA050T, SA050T-IF, SA075T, SA075T-IF, SA100T, SA100T-IF, SA125T, SA125T-IF
25	* SP-05-0048	PARA: SA033M, SA033M-IF, SA050M, SA050M-IF, SA050T, SA050T-IF
25	* SP-05-0049	PARA: SA075M, SA075M-IF, SA075T, SA075T-IF, SA100M, SA100M-IF, SA100T, SA100T-IF, SA125M, SA125M-IF, SA125T, SA125T-IF
26	* SA033MR0300	PARA: SA033M, SA033M-IF
26	* SA050MR0300	PARA: SA050M, SA050M-IF
26	* SA050TR0300	PARA: SA050T, SA050T-IF
26	* SA075MR0300	PARA: SA075M, SA075M-IF
26	* SA075TR0300	PARA: SA075T, SA075T-IF
26	* SA100MR0300	PARA: SA100M, SA100M-IF
26	* SA100TR0300IE2	PARA: SA100T, SA100T-IF
26	* SA125MR0300	PARA: SA125M, SA125M-IF
26	* SA125TR0300	PARA: SA125T, SA125T-IF